

5.9.22.

1840  
Not 11<sup>th</sup> Surveyed Sec 22 in T9: R5.

Hickory 16 N 52 W 16  
do 12 N 81 E 24

W. Oak 26 S 32 E 20  
do 28 N 55 E 28

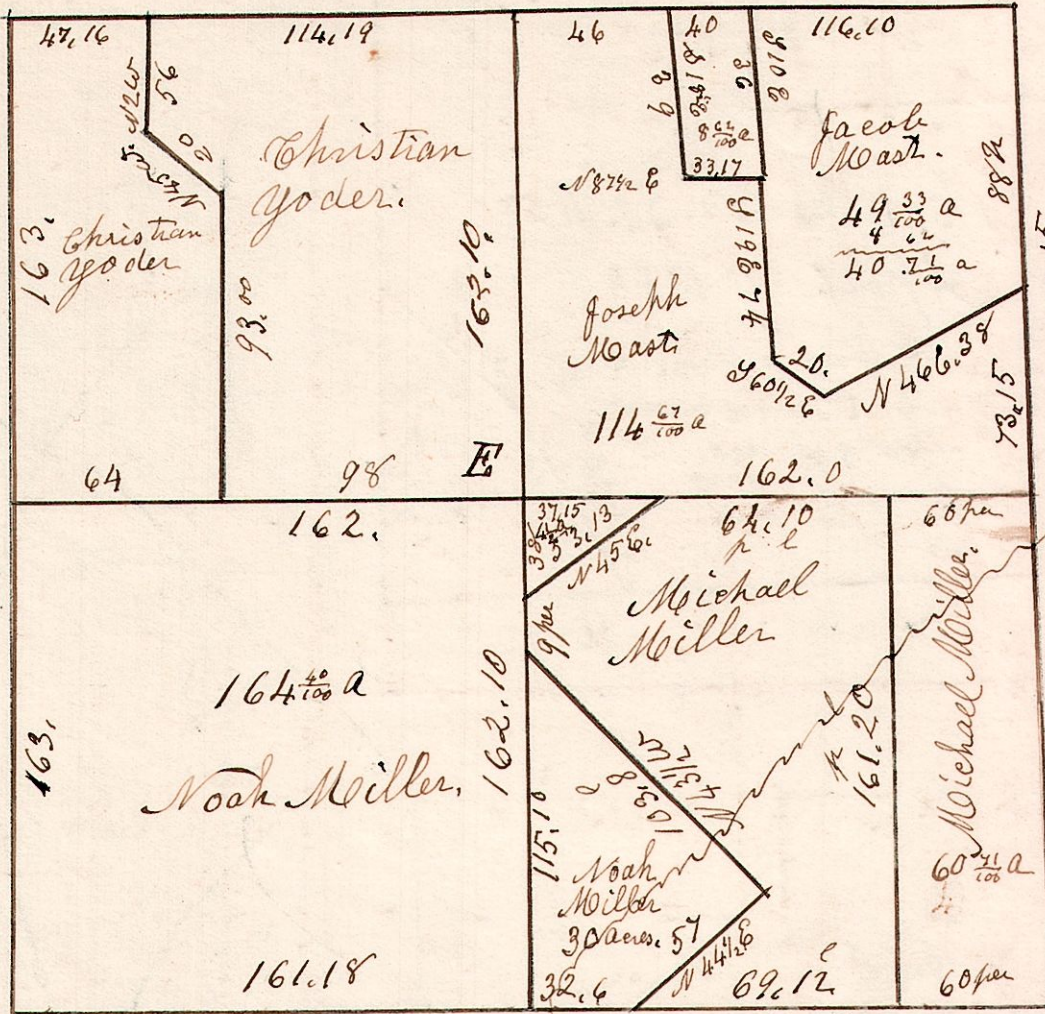
W. Oak 20 S 45 E 24  
do 22 N 36 W 22

No 38

326.9

W. Oak 15 S 78 E 25  
do 18 N 59 E 44

E. W. Oak 20 N 19 E 31  
do 15 S 31 E 7



W. Oak 24 N 82 E 22.  
do 24 S 8 W 4.

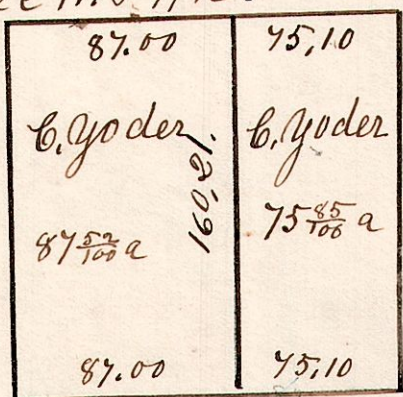
A Stone Corner  
Decayed, planted.

W. Oak 30 N 31 W 16.  
do 12 N 56 E 25.

N 72 Center 324.20

5.9.11. SW

May 1<sup>st</sup> 1852.  
Divided SW 1/4 of  
Sec 11. T9, R5

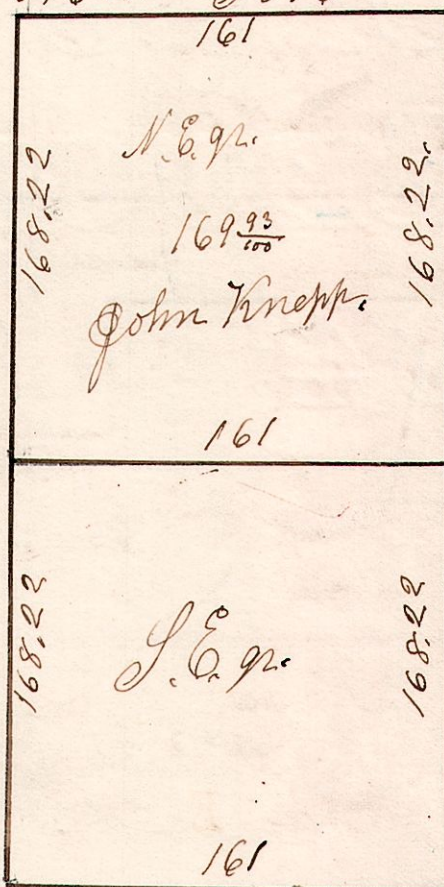


5.9.5

E 1/2 of Sec 5. T9. R5. 2<sup>gr</sup>.

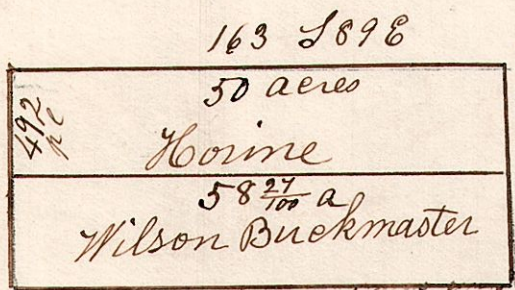
W. Oak 12 S 17 E 12.  
B. Oak 17 S 57 E 17.

W. Oak 14 S 22 E 19.  
do 20 N 4 W 20.



5.10.17. 4<sup>gr</sup>

Sept 3<sup>rd</sup> 1839.



W. Oak 30 S 44 E 17.  
do 14 N 8 W 18.

W. Oak 30 S 14 E 8.  
Cherry 12 N 3 E 33.

January 8<sup>th</sup> 1859.

Lot 17. in 4<sup>th</sup> of T 10. R 5.