

5. 10. 14 + 15. 3<sup>3</sup>/<sub>4</sub> gr.

March 14<sup>th</sup> 1854.

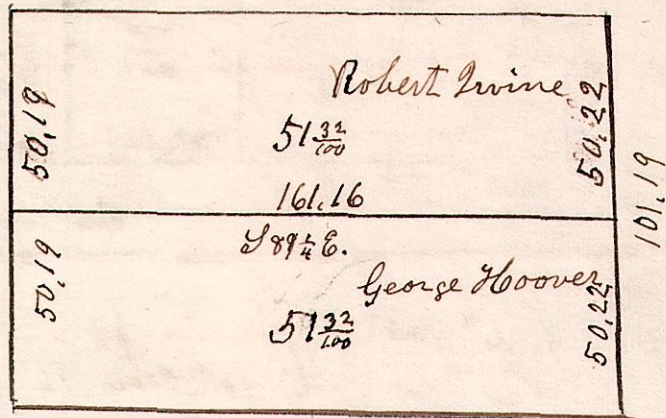
5. 10. 11. 3<sup>3</sup>/<sub>4</sub> gr.

Lot 11. 3<sup>3</sup>/<sub>4</sub> gr. S10. R5.

Sugar 12 S47E 26.  
Gum 12 N74W 6.

Maple 18 South 24  
W. Oak 15 N14E 25

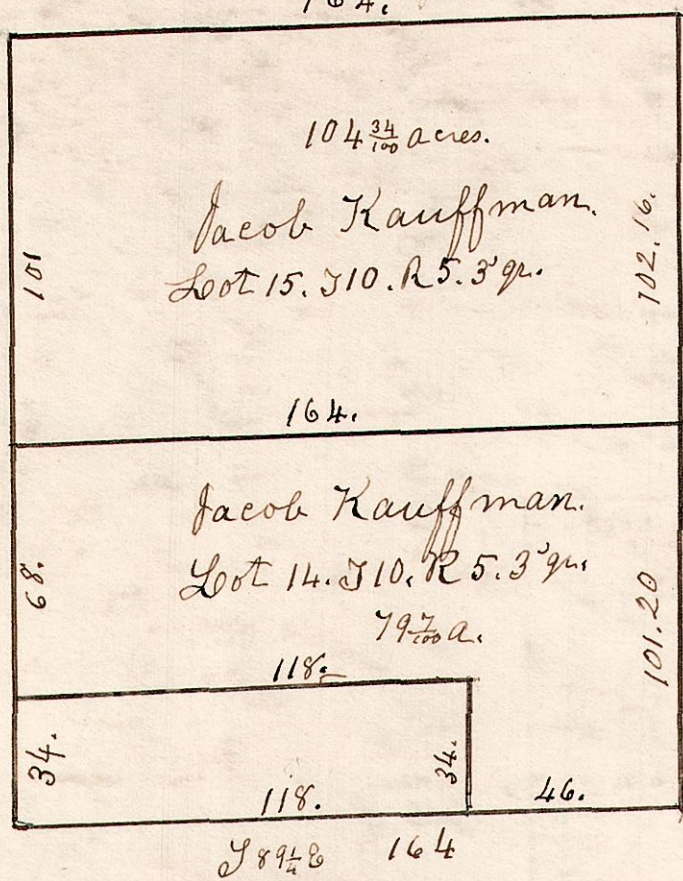
No 130



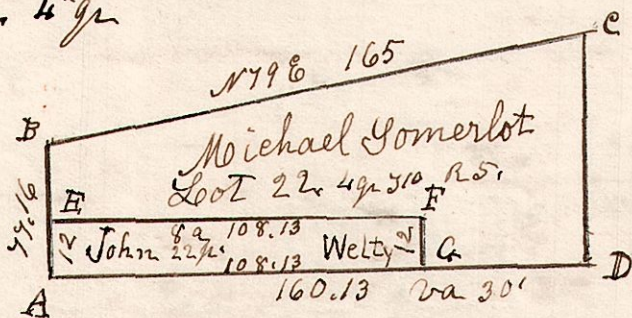
Gum 12 N16E 28  
Hickory 12 S48W 16

W. Oak 20 S44E 36  
do 15 N40W 42

February 18<sup>th</sup> 1857.



5. 10. 22 4<sup>th</sup> gr.



March 18<sup>th</sup> 1839.  
Surveyed Lot 22 in sp 10. R5  
Sec 4 in the following manner  
and for the following persons.

- A W. Oak 26 N41E 20
- do 16 N10W 33
- B W. Oak 18 S65E 27
- do 12 N65W 13
- C Elm 12 S80E 39
- W. Oak 18 S85W 44
- D Chestnut 30 the corner.

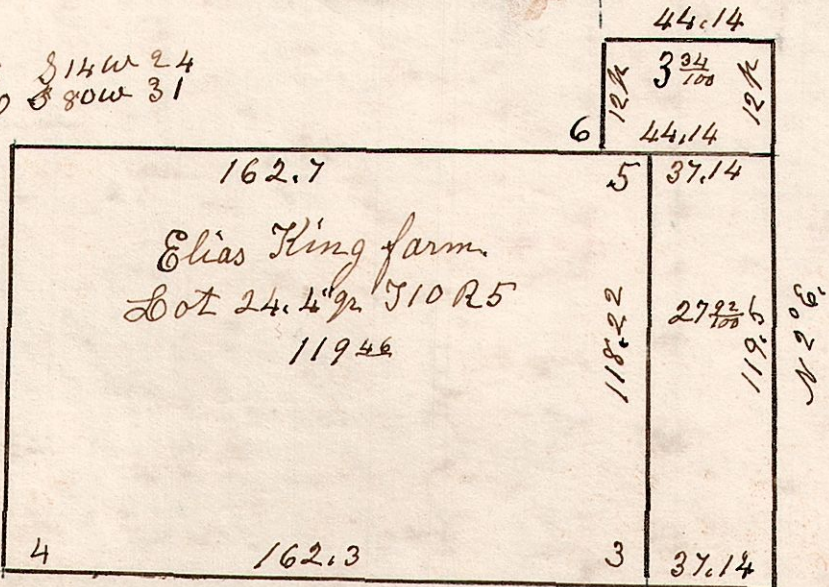
- E W. Oak 18 N55E 5.
- F Stone Corner
- G Stone Corner

5. 10. 24. 4<sup>th</sup> gr. Surveyed for Elias King  
October 25<sup>th</sup> 1866.

6. S w cor 22.  
W. Oak 20 N13E 35.  
do 20 N4W 34.

Lot 22. 4<sup>th</sup> gr. S10. R5

Ash 6 S14W 24  
W. Oak 20 S80W 31



5. NE corner of Lot 24.  
Gum 5 S13W 15.  
W. Oak 29 S51W 28.  
3. SE cor 24. R. Oak 24 corner  
4. S w cor 24. Chestnut 28 corner

Lot 21. 4<sup>th</sup> gr. S10. R5.

Hickory 14 N83E 25.  
Gum 8 N78E 40

W. Oak 20 S10W 17.  
do 30 S35E 30