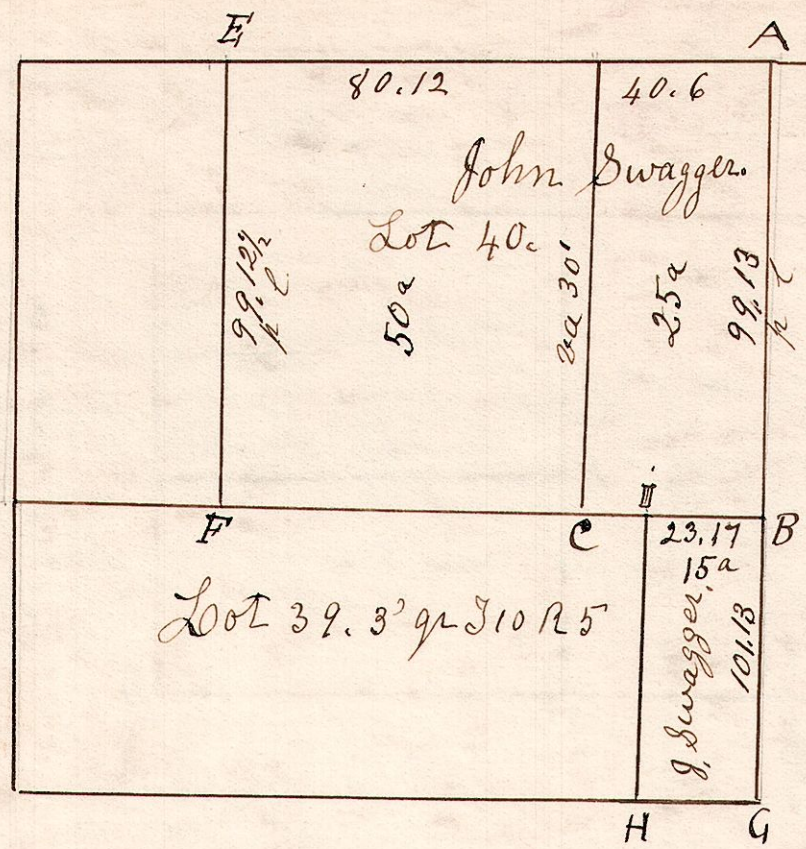
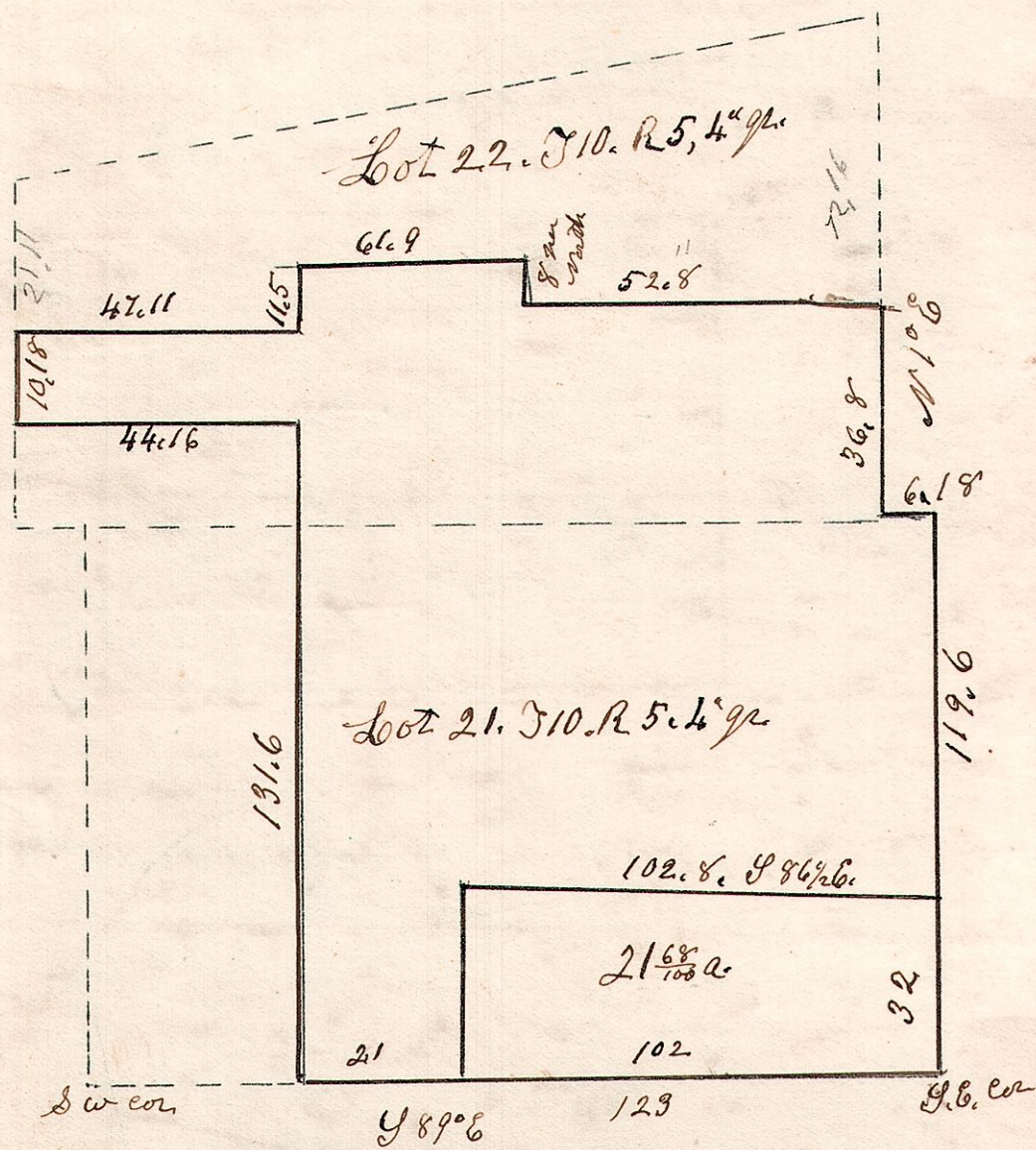


Surveyed a part of lot No 40, in T9. of R5,
 in the 3rd q^r of Military lot for John Swagger.
 Beginning at the N^e corner
 Feb 4th 1826



- A chestnut 7 N67W 19.
- " W. Oak 30 N57E 18
- B W. Oak 12 N45W 44
- " Hickory 10 N39E 16
- C Chestnut 10 S87W 13
- " Hickory 8 N74E 20
- E W. Oak 33 N74E 5
- " Hickory 12 S44W 22
- F W. Oak 10 N22E 22
- " Hickory 5 S13W 9
- G Hickory 6 the corner
- H W. Oak 40 N28W 9,
- " Dogwood 5 South 7.

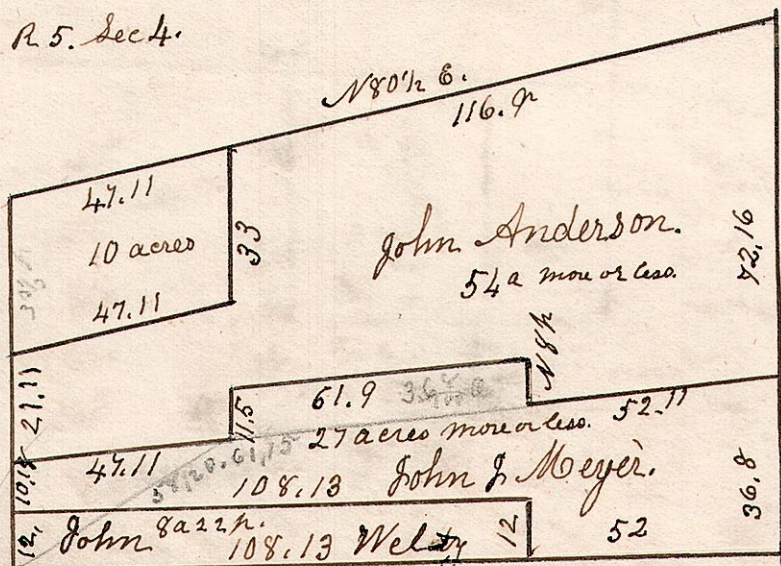
5-10, 21-22, 4th q^r



September 9th 1851 John Welty.

Whole supposed to be 127 acres more or less. (No calculations to be made.)

5-10, 22 Sec 4 Lot 22, in T10. R5. Sec 4.



Surveyed the above Nov 11th 1846.
 Samuel Robinson Surveyor.