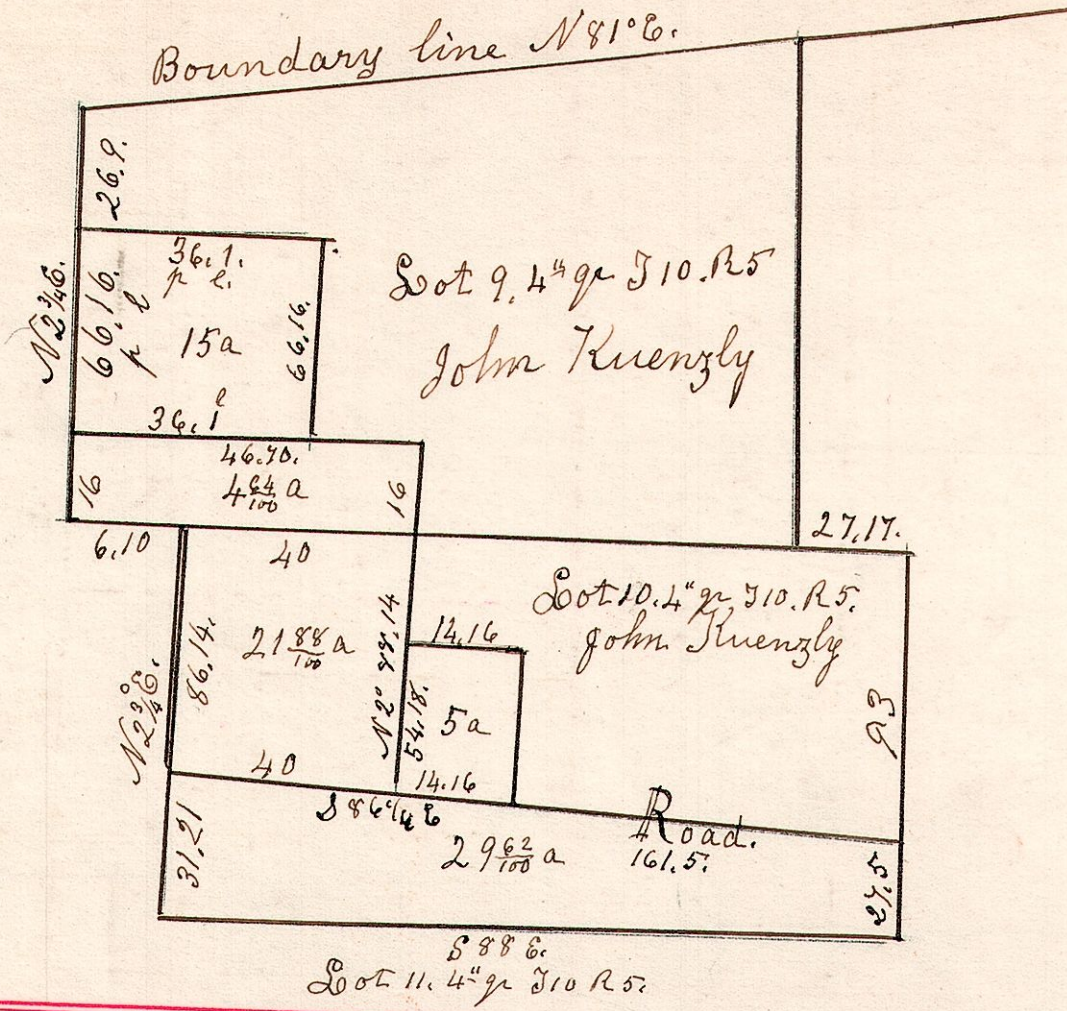


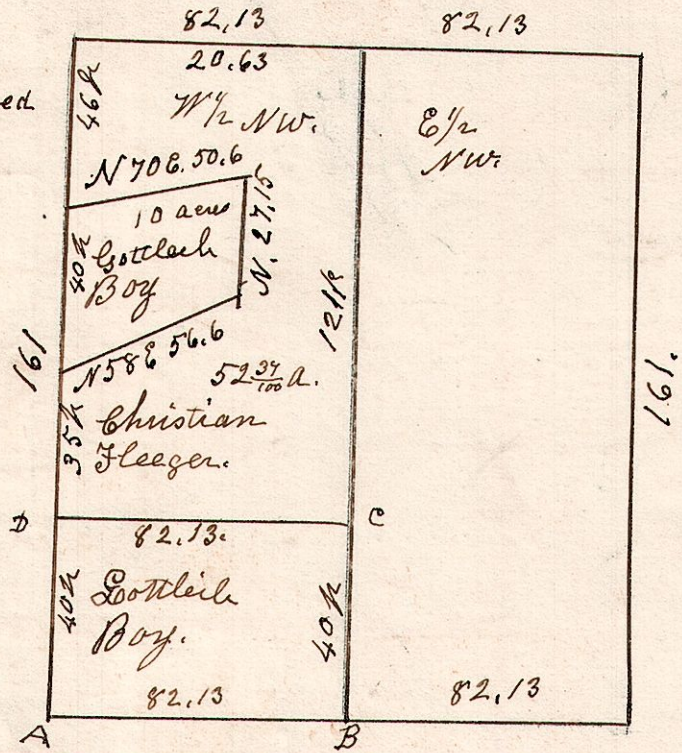
5. 10. 9th 4th q^r



5. 9-8.

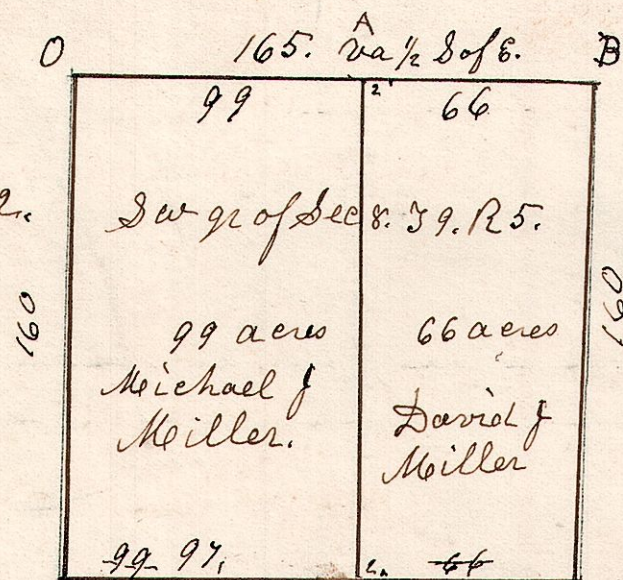
August 13th 1833, Surveyed
the NW 1/2 of the NW 1/4 of
Sec 8. T 9. R 5
A. B. C. D contains 20 acres
and 1 perch wide along
the S side from A to B.
for a road

See Gabriel Hochstetler
Survey 1829.



5. 9. 8.

Surveyed Feb 5th 1852.



Chestnut 28. S 11 W 41. 165° 68' W oak 26 N 44 W 26.
B. Oak 30. N 9 W 48. do 16 S 30 W 53.

June 19th 1893. Started at a Stone, O, and ran to B, and established
a corner and planted stone. The corner A was established by agreement
between A. J. Kaufman, C. P. Shook, Jos Gingerich and Benjamin
Hochstetler, the owners of section 8, all being present and agreeing.

H. C. Robinson
Surveyor.