

4.9.6

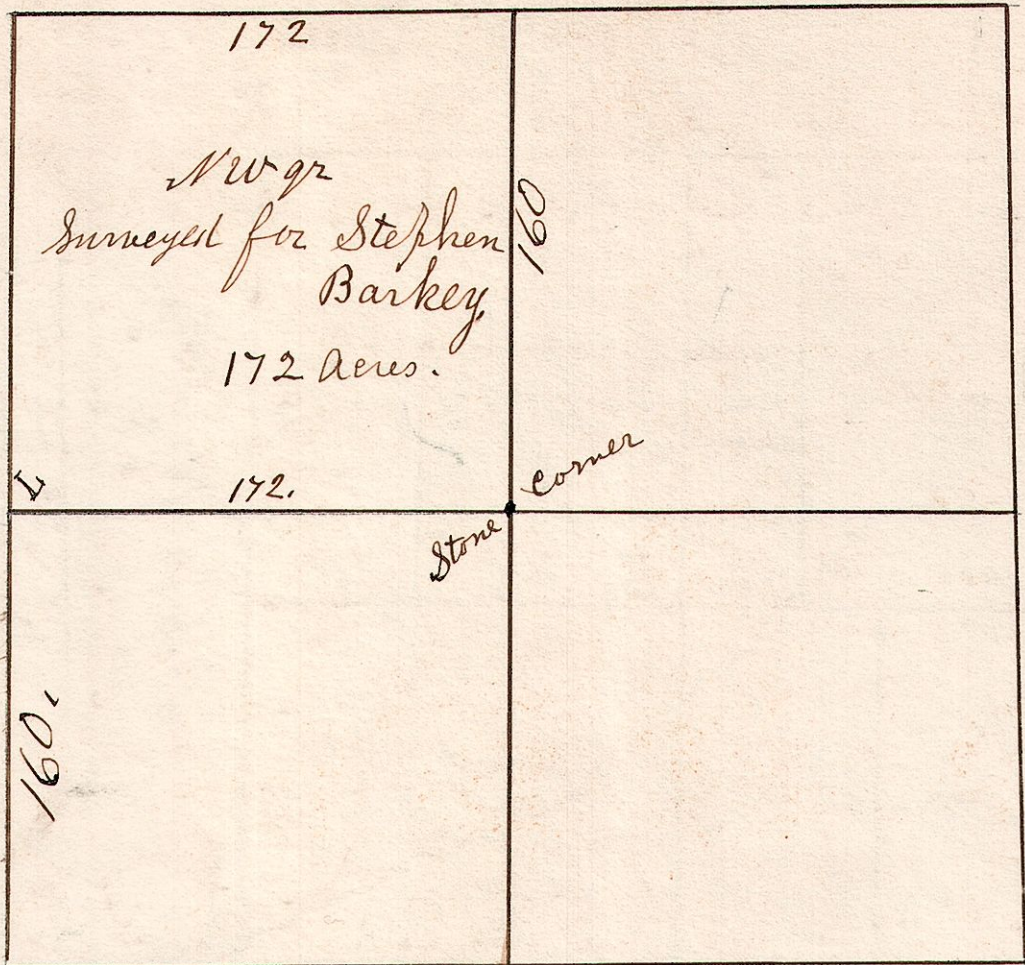
Feb 6, 1852.

Surveyed the NW gr of Section 6. T9. R4.  
 Hickory 8. S 85 E. 11. Decayed.  
 W. Oak 7. S 64 W 35

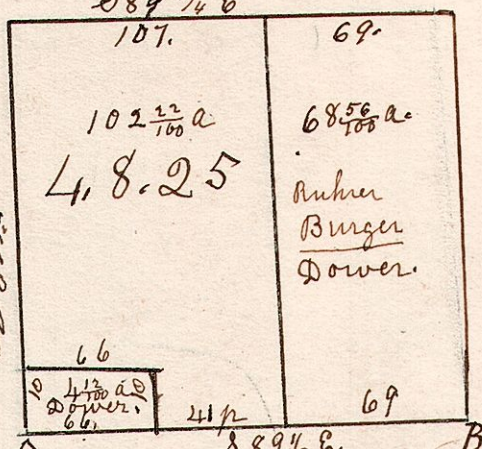
W. Oak 14 S 65 W 22.  
 Maple 14 N 63 E. 34.

No 89.

G. W. Oak 20. S 65 E 7.  
 Maple 12. N 47 W 27.  
 L. W. Oak 20. S 25 W 57. 48/160.



NW gr of Sec 25. T8. R4.  
 S 89 3/4 E



A. W Oak 18. N 51 E 31  
 B. Hickory 15 N 82 W 47.

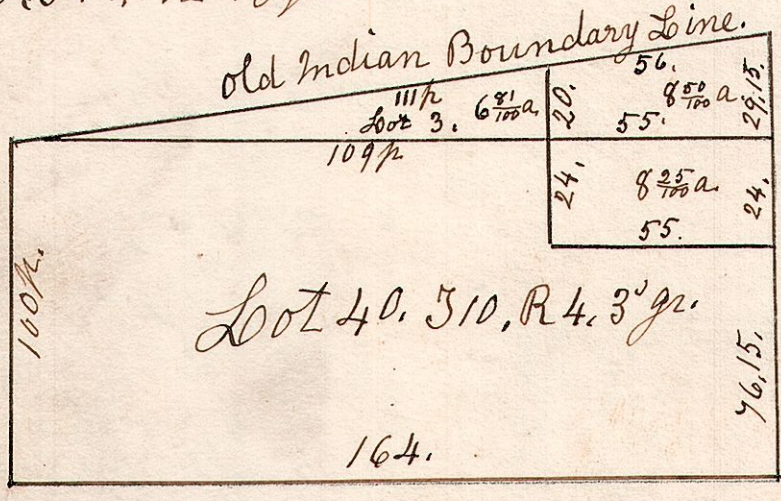
W. Oak 18 S 58 E 12.  
 do. 15 N 89 W 30.

Hickory 6. S 7 W 6.  
 W. Oak 6. N 7 E 26.

Sugar 17 N 18 E 11.  
 Hickory 12 S 34 E 55.

4, 10.3 + 40.2 + 3 grs.

No 94.



Surveyed the above February 13<sup>th</sup> 1834.  
 Being lot No 40. in S 10. of R 4. and 3<sup>rd</sup> gr.  
 Also the west part of lot (or fraction)  
 3. in S 10. of R 4. 2<sup>nd</sup> gr.

4, 10. 27. 3<sup>rd</sup> gr.

No 90

