

4. 10. 18. 3rd gr.

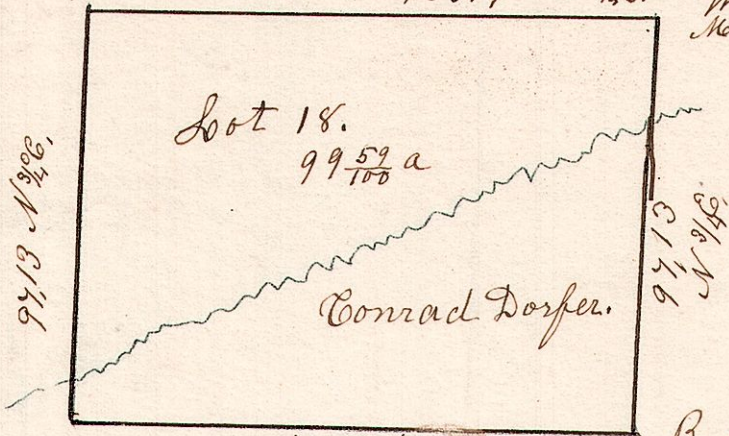
No 65. Lot 18 in the 3rd gr. Tp 10. R 4.

March 15th 1853.

Sugar 18 N 55 W 13.
Betch 9 S 27 E 40.

n. l. 163.9 S 88 3/4 E.

W. Oak 15 N 23 E 30. X.
Maple 10 S 8 W 27.
Ash 16 S 84 W 31



Sugar 8 N 86 W 11.
do 7 S 41 E 28.

S 88 3/4 E 163.10.

R Oak. 17. N 6 E 11.
Hickory. 20. N 27 E 46.

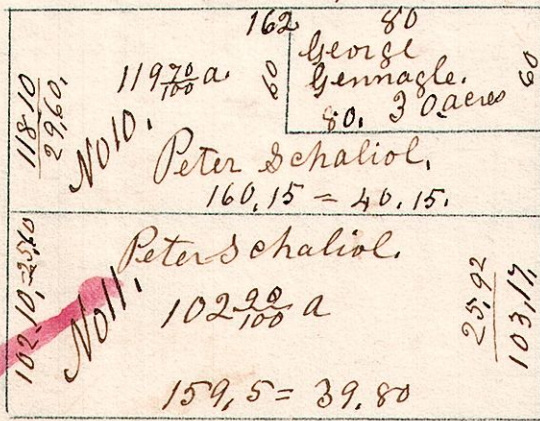
5- 10. 11+12. 4th gr.
No 66. March 15th 1832. Surveyed lots No 11+12 in the 4th gr of the 10th Township and 5th Range for.

B. Oak 24. corner.

Post. 40.50.

Poplar 10 North 4.
W. Oak. 24 South 24.

Doc. wood 6. N 53 W 15.
W. Oak. 36. N 74 E 24



W Oak 3. S 41 W 4.
Chestnut 4. N 80 W 20.

Gum 10 S 8 W 17.
W. Oak 30 S 4 E 33.

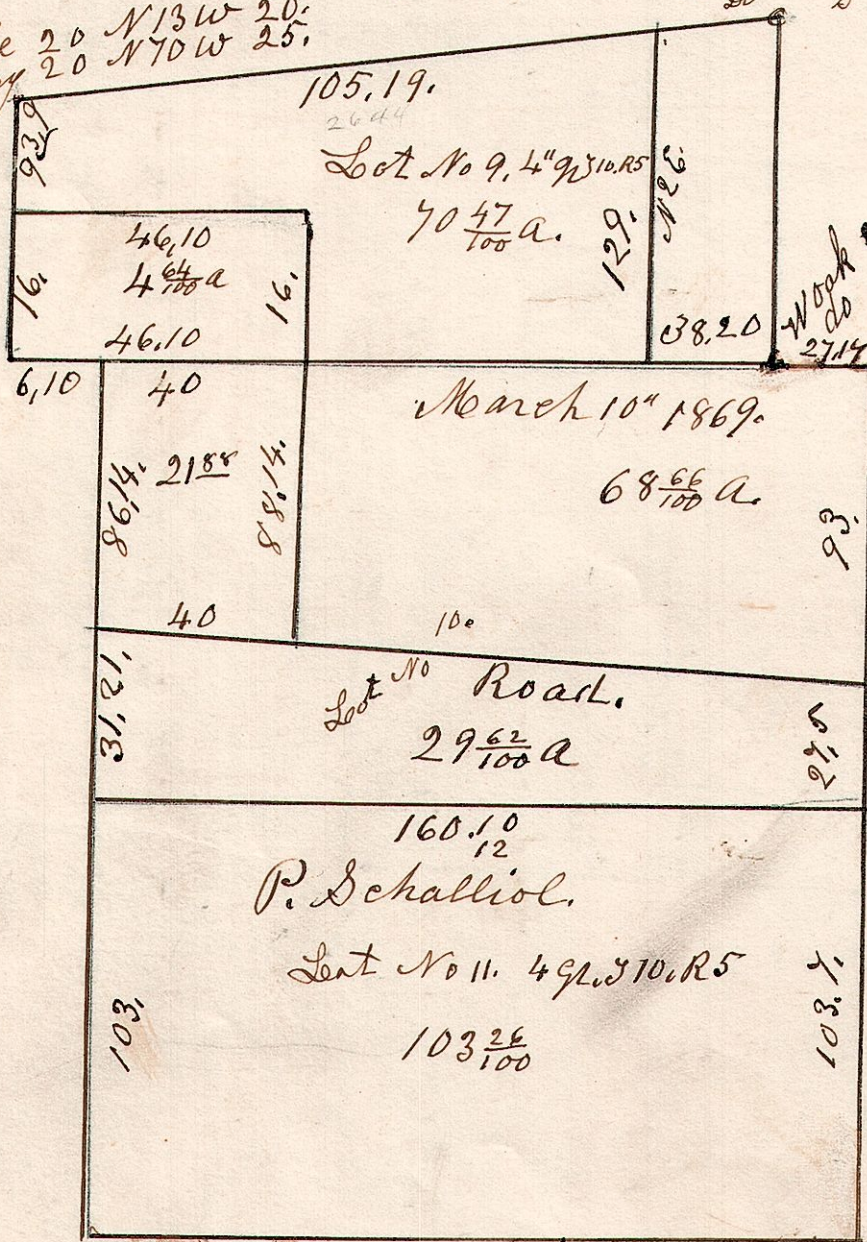
W. Oak. 3. S 45 W 15.
do 30. N 45 E 32

5- 10. 9-10-11. 4th gr.

No 67.

Maple 20 N 13 W 20.
Hickory 20 N 70 W 25.

2 Ash. N 31 W 41.
do S 47 E 11.



W Oak 20 N 13 W 6.
do S 43 E 16.

160 S 88 1/2 E.

Apr 12th 1866.

J.