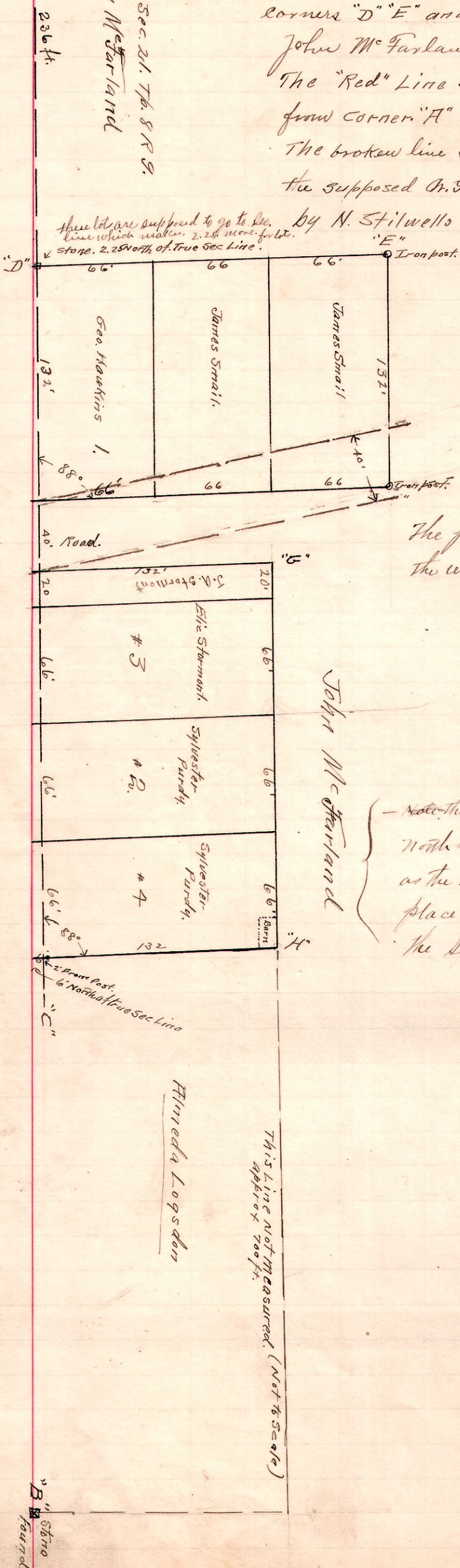


9821 NE

Stone Found Center Sec. 21. T. 8 R. 9

B. E. O. Sec. 21. T. 8 R. 9.  
John McFarland



A. legal survey made at request of John McFarland on February 17, 1915 on notices served on Geo. Hawkins, Jas. A. Stormont, Eliz Stormont, Almeda Logsdon, James Small and Sylvester Purdy, on Dec. 14, 1914 and sworn returns of service made according to law, on Dec. 1915, for determining lines and corners "D" "E" and "E" "F" and "G" "H" Between Lands of said John McFarland and Lot owners herein named.

The "Red" Line shows the true Or. Section line which was run from corner "A" to quarter, quarter corner "B"

The broken line shows line measured from by N. Stilwell the supposed Or. Sec. line as shown on ground by line "E" "H"

I have made survey and established lines and corners as shown on plat with assistance of Ambory Gibson and Frank Gauge sworn as chairman. Present, James Small, Geo. Hawkins, J. A. Stormont, Sylvester Purdy, John McFarland and Mr. Logsdon.

The public highway 40 ft wide cut off parts of the west row of lots as shown by ~~the~~ lines

W. L. Reidenbach  
County Surveyor

John McFarland

Note.  
- Note the measure made by Stilwell was commenced too far north by 6 ft. at the east and hence the lot are a little longer as the north line was marked and buildings placed to it and is to so remain. the Sec. line being indefinite at that time.

This line not measured. (Not to scale)  
approx 700 ft.

Almeda Logsdon

Stone Found "B"