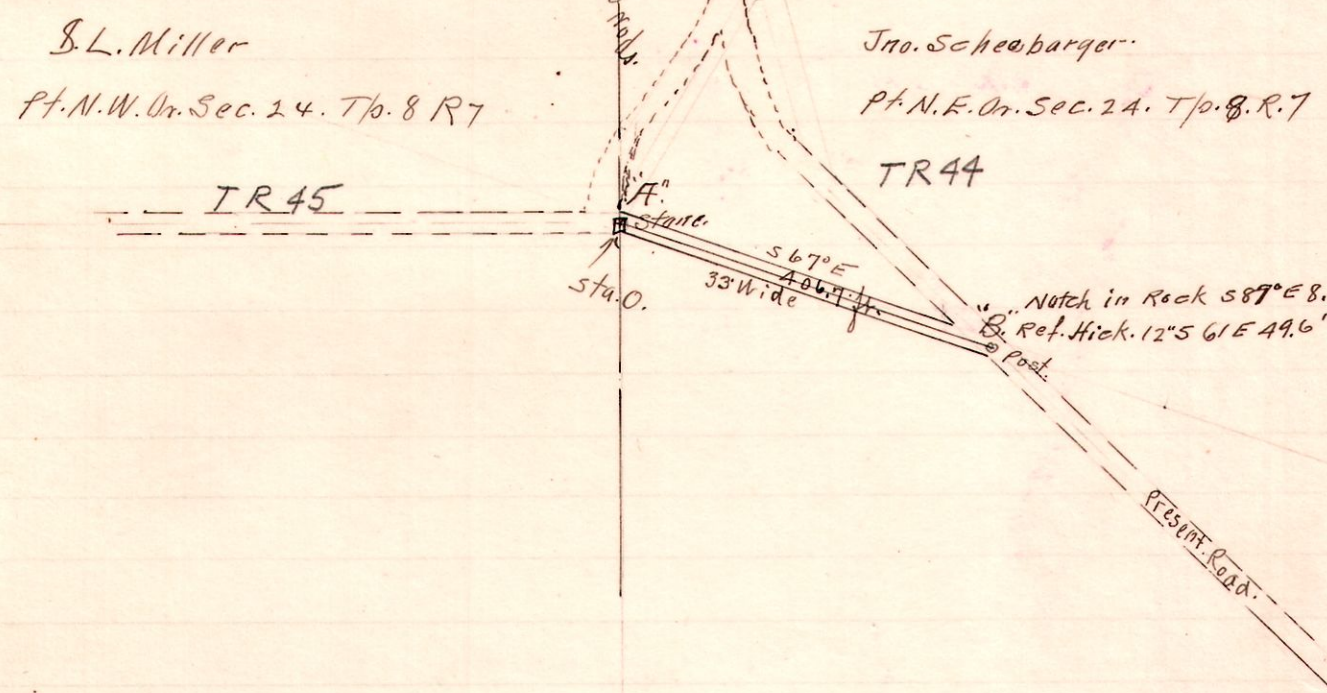


R Tp Sec
7 8 24

Survey made for Trustees for Tp. road on lands of Jno Schuebarger in
Pt. N.W. Sec. 24 Tp. 8 R. 7 as shown by plat. same to be dedicated to
Tp by deed by Jno Schuebarger. Chas Carpenter & Son
Lehmann.

Aug. 26. 1914
N.L. Reidenbach
Co Surveyor.



R. T. Sec. OL.
7 9 12 30

MILLERSBURG 6/27/41

