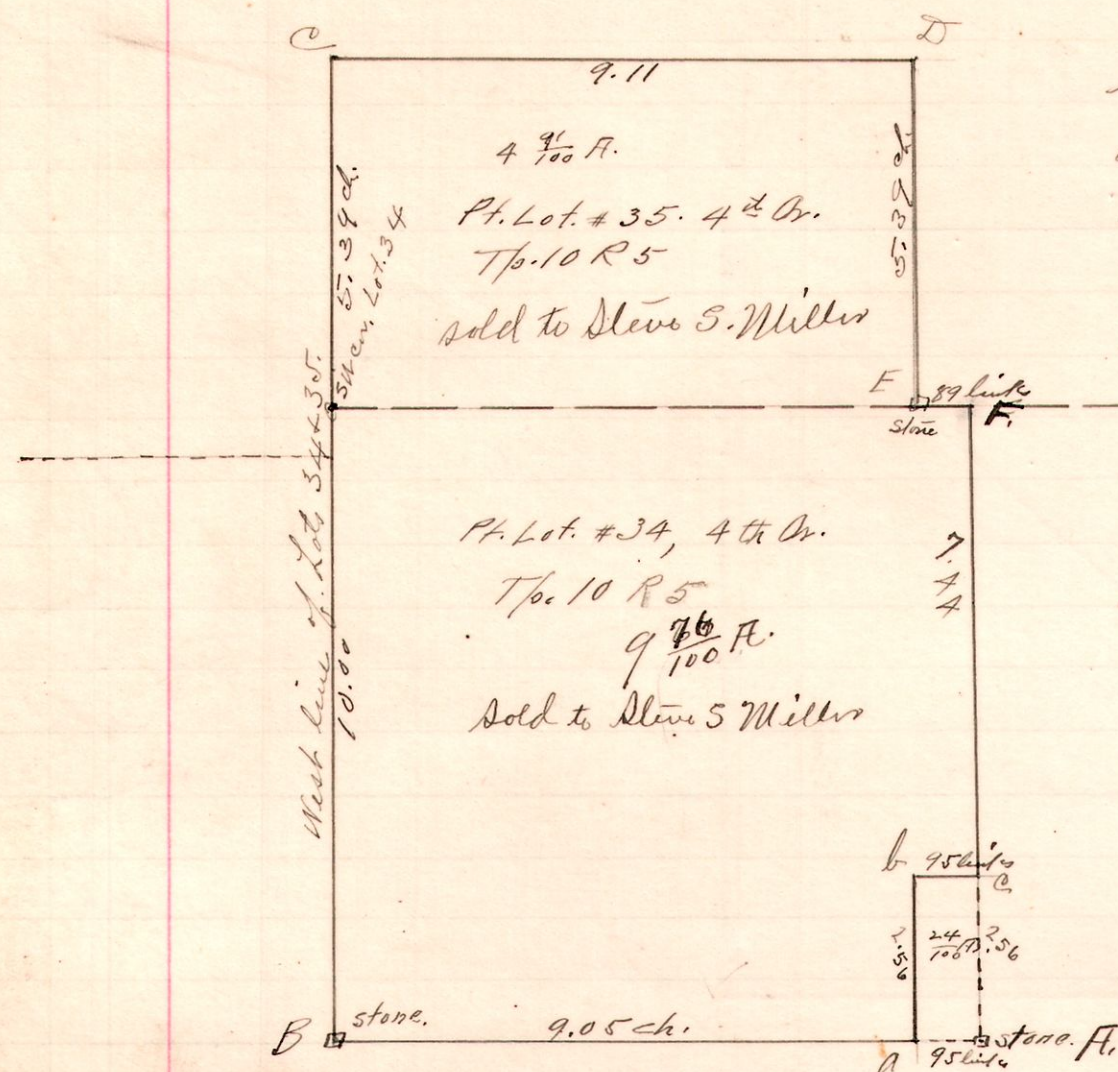


R. To Cr. Tr. Lot.
5 10 4² 34
35.



Survey made for Gosh S. Miller and Steve S. Miller of parts of Lot #34 + 35 in the 4th Cr. of Tp. 10 in Range 5. to cut out tract, A, a, b, c, as shown. which tract was retained and the 9⁷⁶/₁₀₀ and 4⁷/₁₀₀ a. tracts sold to Steve S. Miller

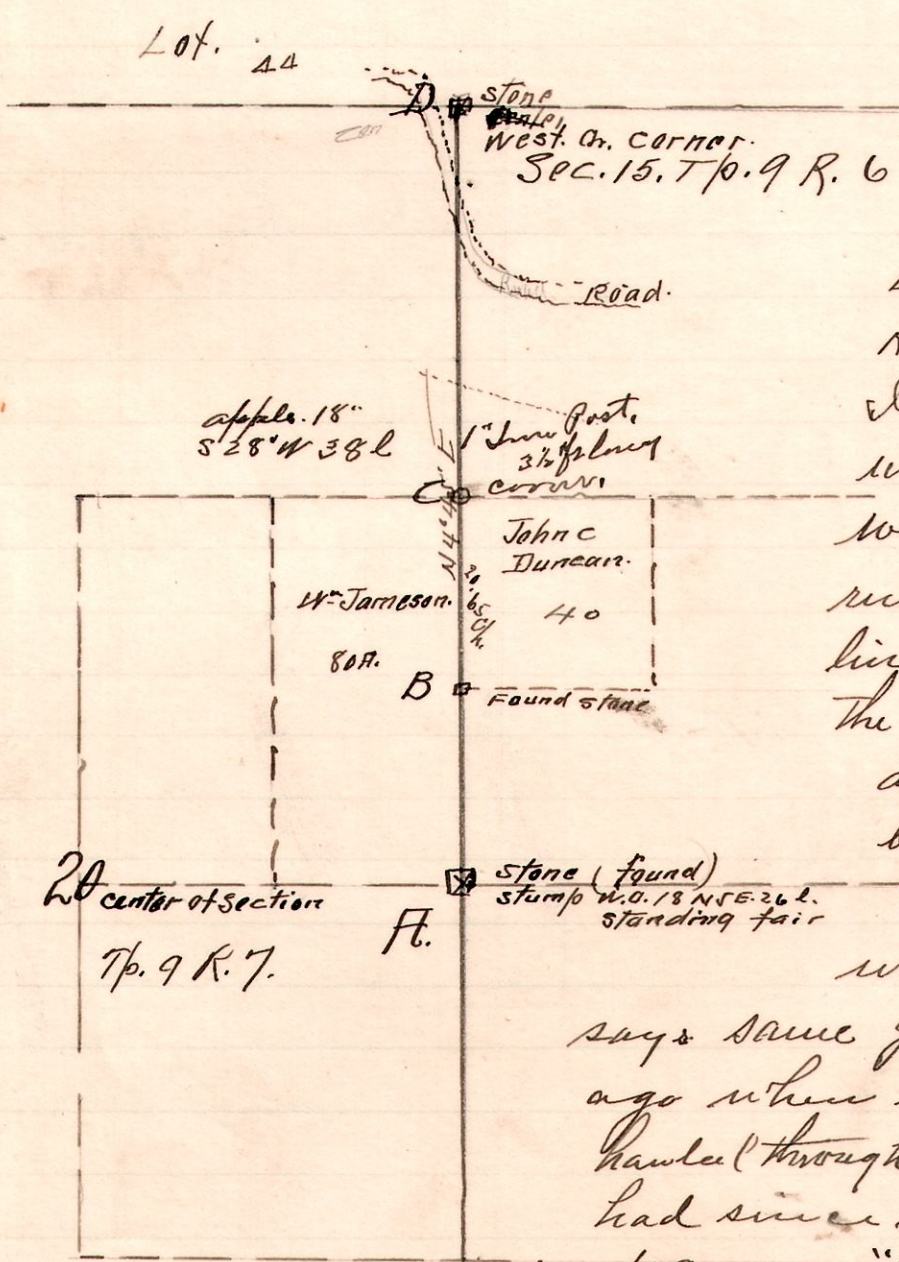
Chairman } C. D. Schetz
Gosh S. Miller
A. Man. Steve S. Miller

Feb. 21st 1914.
W. L. Reidenbach
Co. Surveyor

Former deed called for 15⁷/₁₀₀ in 9th d. tract. with the above measurements, and was erroneous as to computation. all stones marked on plat were found in this survey.

7 9 20

March 25th 1914.



Survey made for John C. Duncan and Wm. Jameson to determine Line from F. to C. Run Range line from "F" where I found the old corner stone with stump of one of the original witnesses standing. I then run random north on Range line to corner "D" where I find the old corner stone.

at "B" I found a stone north of a big fence post which checks to 1/4 link. at "C" no corner was found as Mr. Duncan says same got removed a long time ago when logs were dragged through or stone hauled through and no fixed corner was had since. I set Iron Post 3 1/2 ft. high at corner "C" and reference by apple tree 18° 5 28' West. 38 links.

Guy Duncan } chairman
J. Calhoun
Wm. Calhoun flagman
Wm. Jameson & J. C. Duncan parents.

W. L. Reidenbach
Co. Surveyor