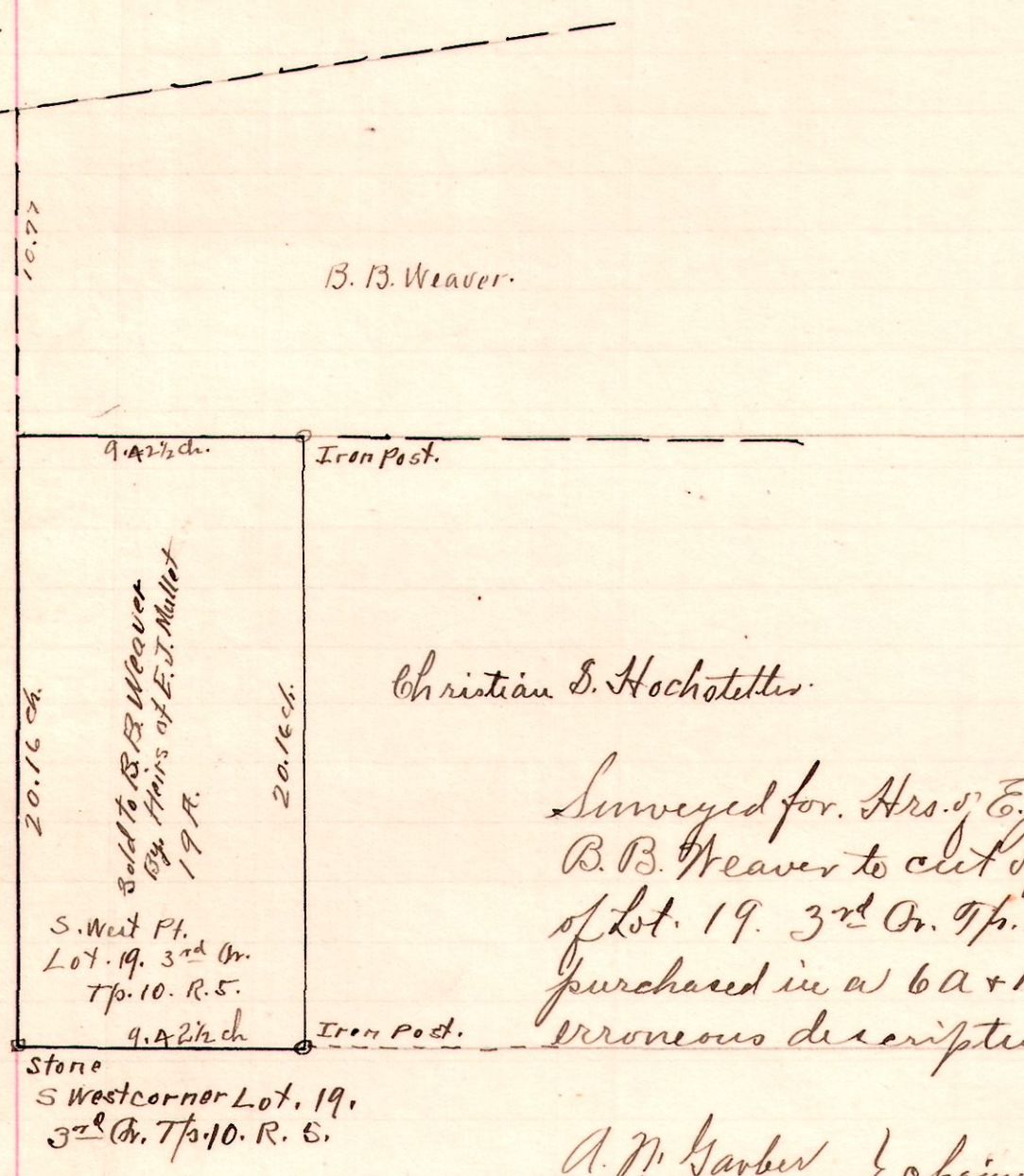


R. T. Sec. 10th Or Lot.

5 10 3rd 19.



B. B. Weaver.

Christian S. Hochstetler.

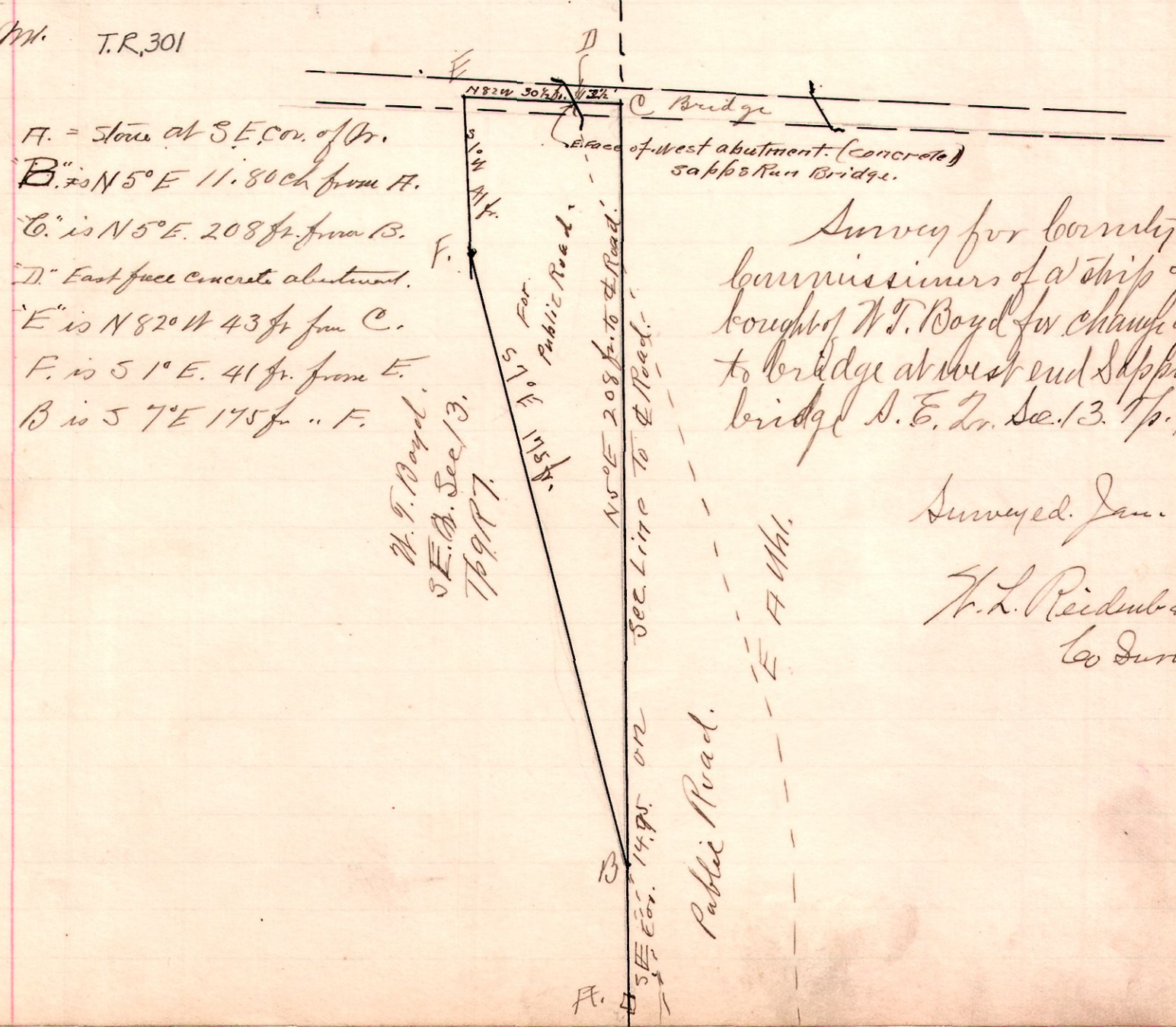
Surveyed for Mrs. E. J. Mullet deceased and B. B. Weaver to cut off 19 acres off of west part of Lot. 19. 3rd Or. Tps. 10. R. 5. This was formerly purchased in a 6a + 13a. tracts with an erroneous description for the 13a. tract.

A. M. Garber } chairman
 H. L. Reidenbach }

H. L. Reidenbach
 Co. Surveyor

Nov. 17. 1913.

7 9 13 S.E. Qr. T.R. 301



A. = Stone at S.E. cor. of Or.
 B. is N 5° E 11.80 ch from A.
 C. is N 5° E 208 ft from B.
 D. East face concrete abutment.
 E. is N 82° W 43 ft from C.
 F. is S 1° E 41 ft from E.
 B is S 7° E 175 ft from F.

W. F. Boyd.
 S.E. Qr. Sec. 13.
 Tps. 9 R. 7.

Survey for County Commissioners of a strip of land bought of W. F. Boyd for change of approach to bridge at west end of Sappo Run bridge S.E. Qr. Sec. 13. Tps. 9 R. 7.

Surveyed Jan. 16. 1914

H. L. Reidenbach
 Co. Surveyor

Public Road.

E A Wm.