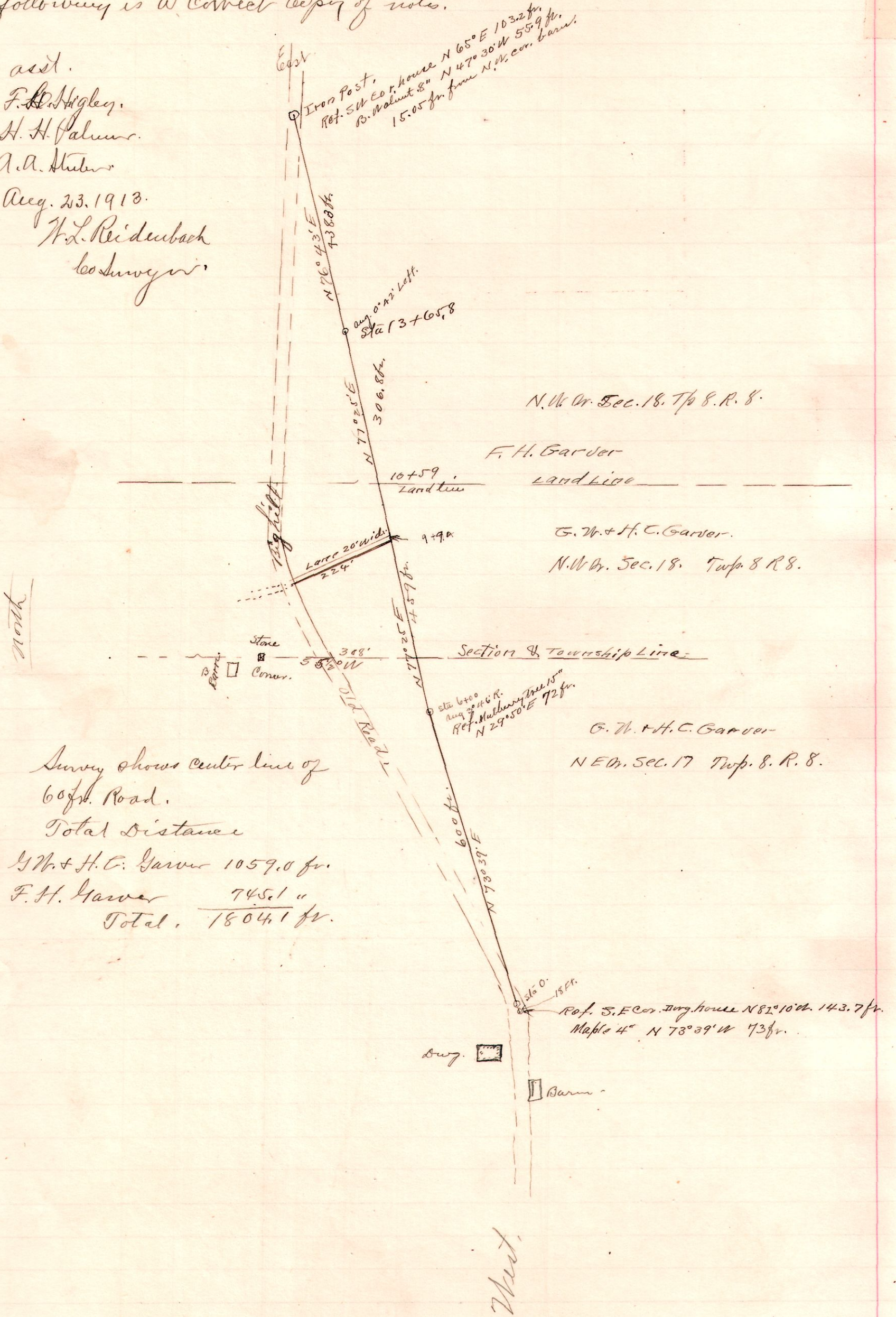


R Tp Sec.
8 8 17 NE
18 NW

U 562

Survey made by order of County Commissioners for locating road and marking same as decided to County by F. H. + Laura Garver and the west part by G. W. + H. C. Garver and wife of which the following is a correct copy of notes.

asst.
F. H. Higley.
H. H. Palmer.
A. A. Huber
Aug. 23, 1913.
W. L. Reidenbach
Co. Surveyor.



Survey shows center line of
60 ft. Road.
Total Distance
G. W. + H. C. Garver 1059.0 ft.
F. H. Garver 745.1 "
Total. 1804.1 ft.

N. W. Or. Sec. 18. Tp 8. R. 8.

F. H. Garver
Land Line

G. W. + H. C. Garver.
N. W. Or. Sec. 18. Twp 8 R 8.

Section & Township Line

G. W. + H. C. Garver
N. E. Or. Sec. 17 Twp. 8. R. 8.

Ref. S. E. Cor. Jurg. house N 82° 10' W 143.7 ft.
Maple 4" N 73° 39' W 73 ft.