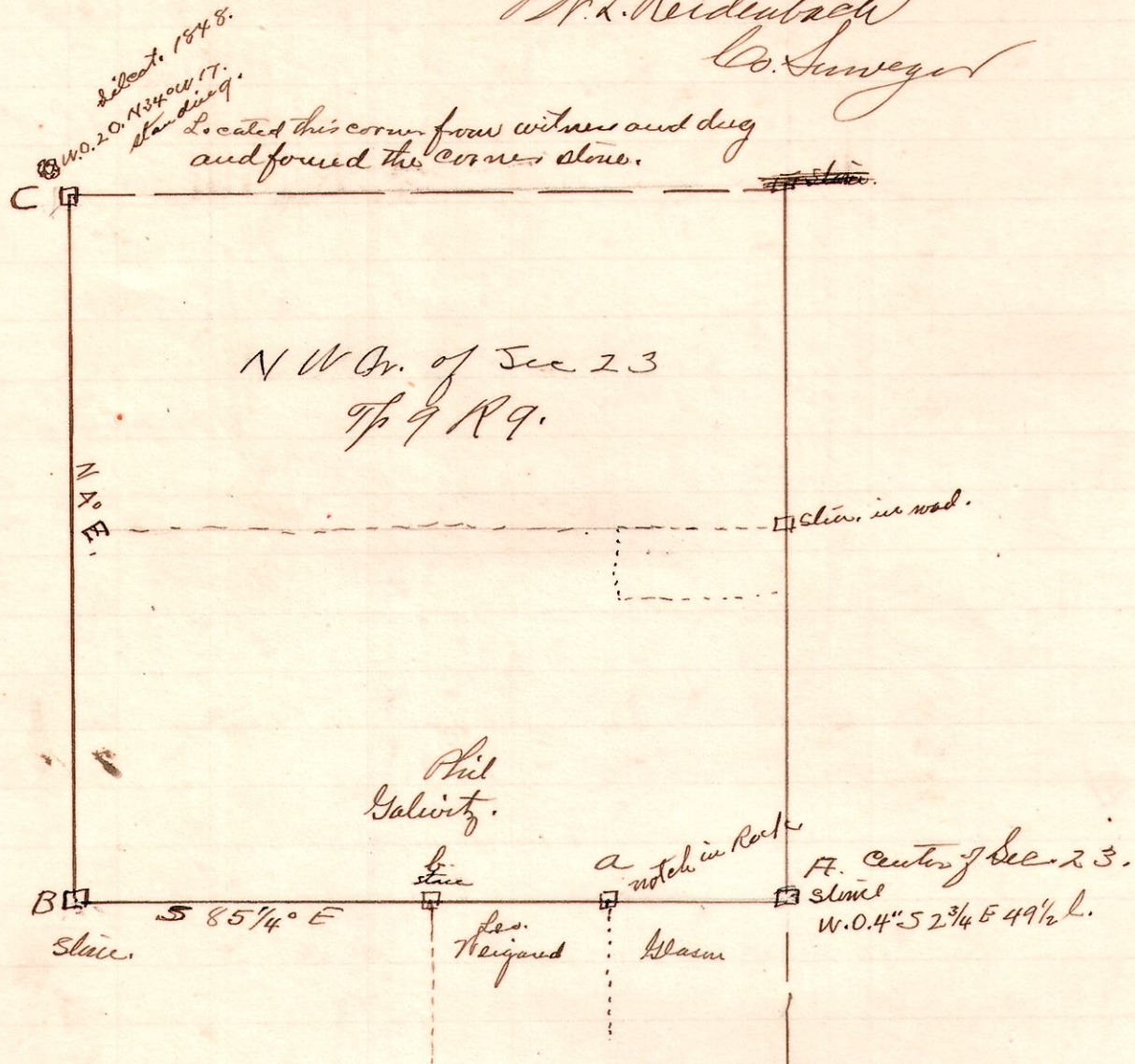


R T Sec
9 9 23.

Survey made for Phil Galwitz & Leo Weigand to locate line
A to B. as same trees were in dispute. also run line B to C.
Chainsmen, Leo Weigand, Phil Galwitz & Saw. Surveyed as shown in
Plat. Mch 19. 1913

H. L. Reidubach
Co. Surveyor



- Corner "A" Center of Sec. 23. soft sand stone 3" in under ground.
- " " "a" notch in big rock.
- " " "b" stone in good condition stamp of Lidort is wit standing.
- " " "B" " " " "
- " " "C" Red sand stone found from W. 0.20 N 34 W 17. standing.

I run from "A" to "b" and at "a" find notch in big Rock. North 10" from
a true line from "A" to "b" and stakes line through from this stone to "a"