

7912
Millersburg

Survey made for H. Lee + R. L. Griggs
to locate line and C. C. Clewley to
locate line B C D + corners.
Being the south part of out lot # 45
in Millersburg, O.

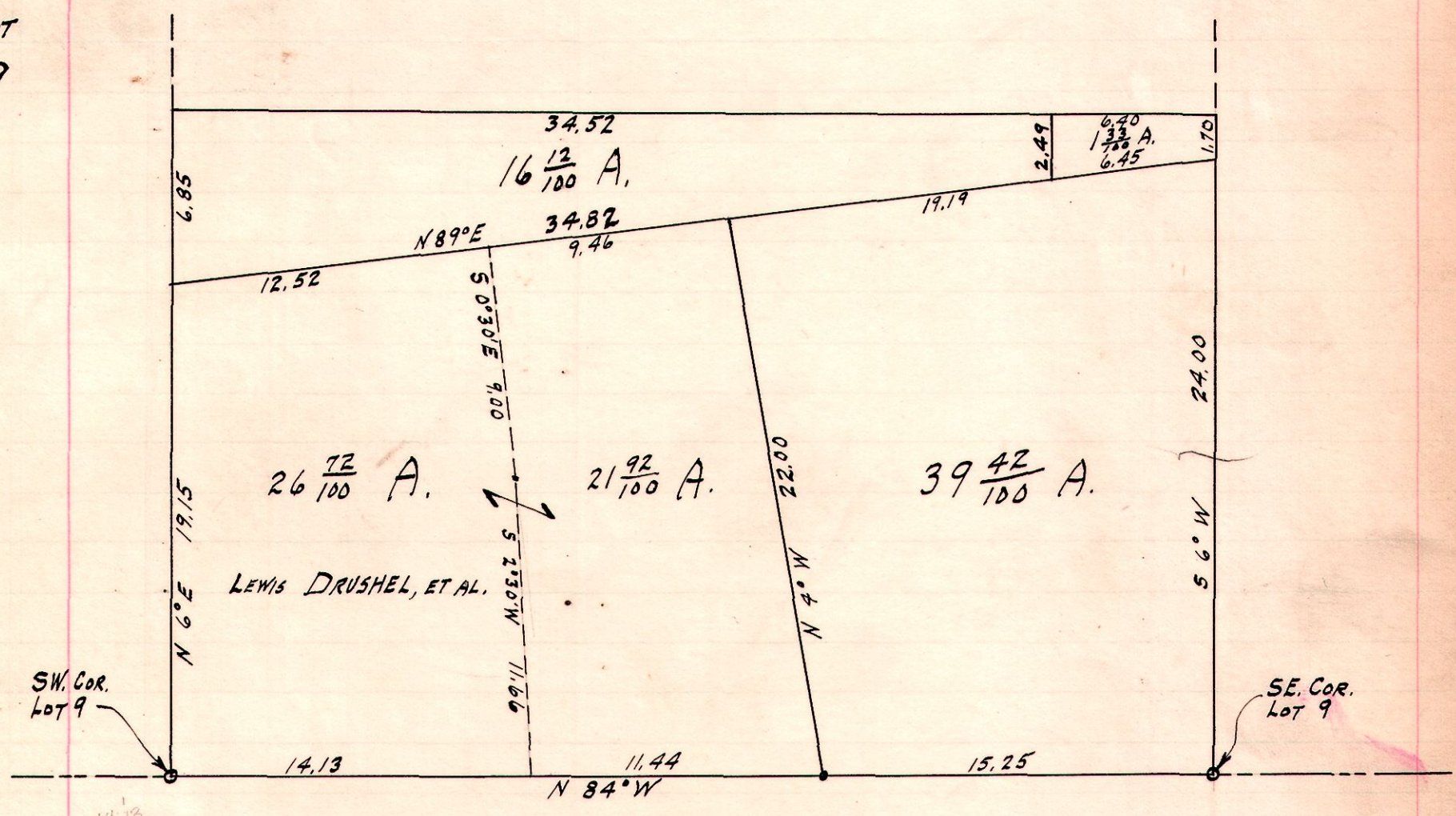
I set iron posts (Gas pipes) at each
corner

Jacob King + R. L. Griggs
March 17, 1913. *Chainmen*

H. L. Reidenbach
Co. Surveyors.



R T QR Lot
6 10 4th 9



Survey made for Lewis Drushel, et al, of the South part of
Lot 9.
3/30/42
H. W. H.