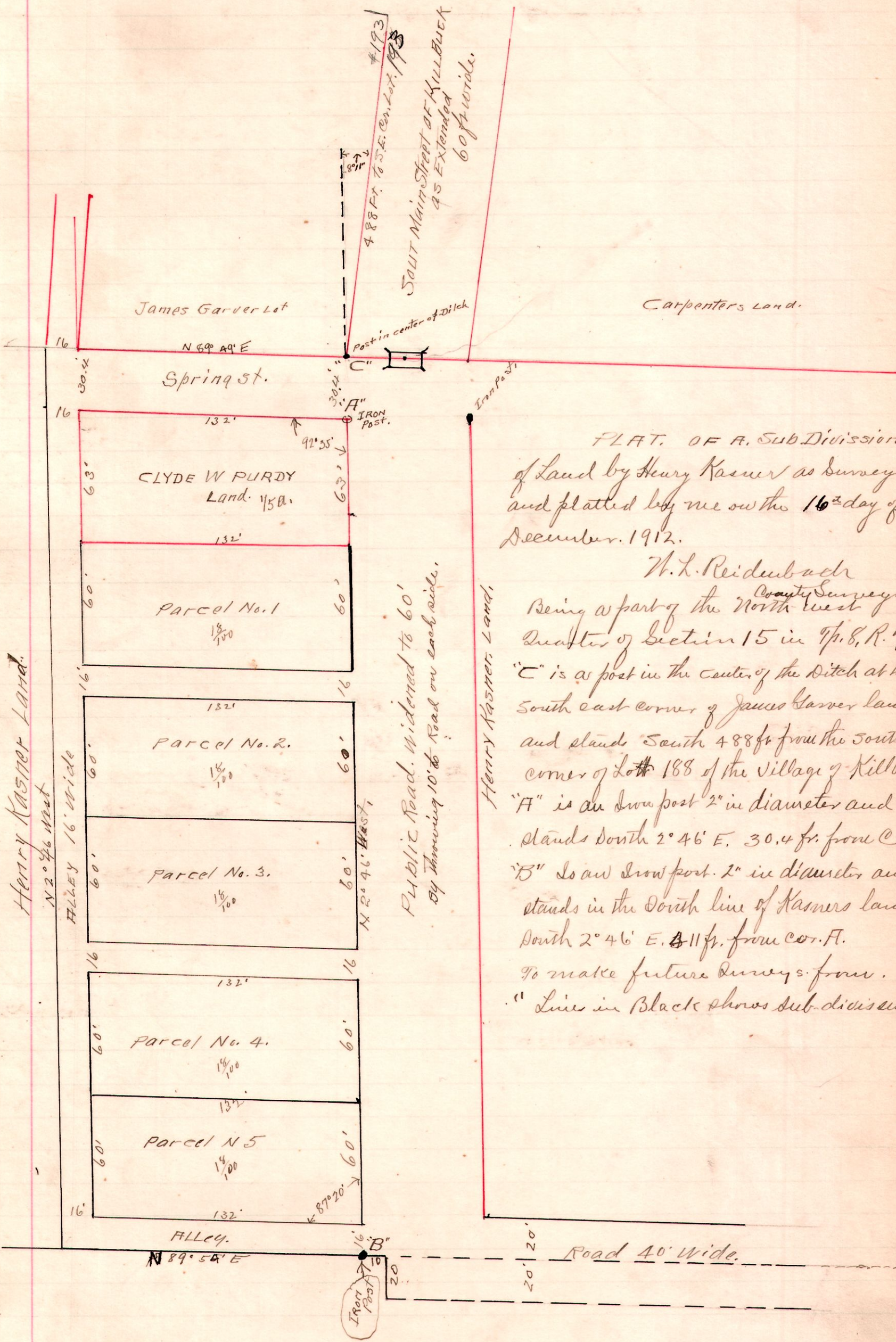


7 & 15 Pt. N West Cr.



PLAT OF A SUB-DIVISION
 of Land by Henry Kasner as surveyed
 and platted by me on the 16th day of
 December, 1912.

W. L. Reidenbach
 County Surveyor.
 Being a part of the North West
 Quarter of Section 15 in T. 8, R. 7
 "C" is a post in the center of the ditch at the
 south east corner of James Garver land.
 and stands South 488 ft from the south east
 corner of Lot 188 of the Village of Killbuck
 "A" is an iron post 2" in diameter and
 stands South $2^{\circ} 46' E$. 30.4 ft. from C.
 "B" is an iron post 2" in diameter and
 stands in the South line of Kasner's land
 South $2^{\circ} 46' E$. 81 ft. from cor. A.
 To make future surveys from.
 "Line in Black shows sub-division"

Stone
 Branch
 Rail Road