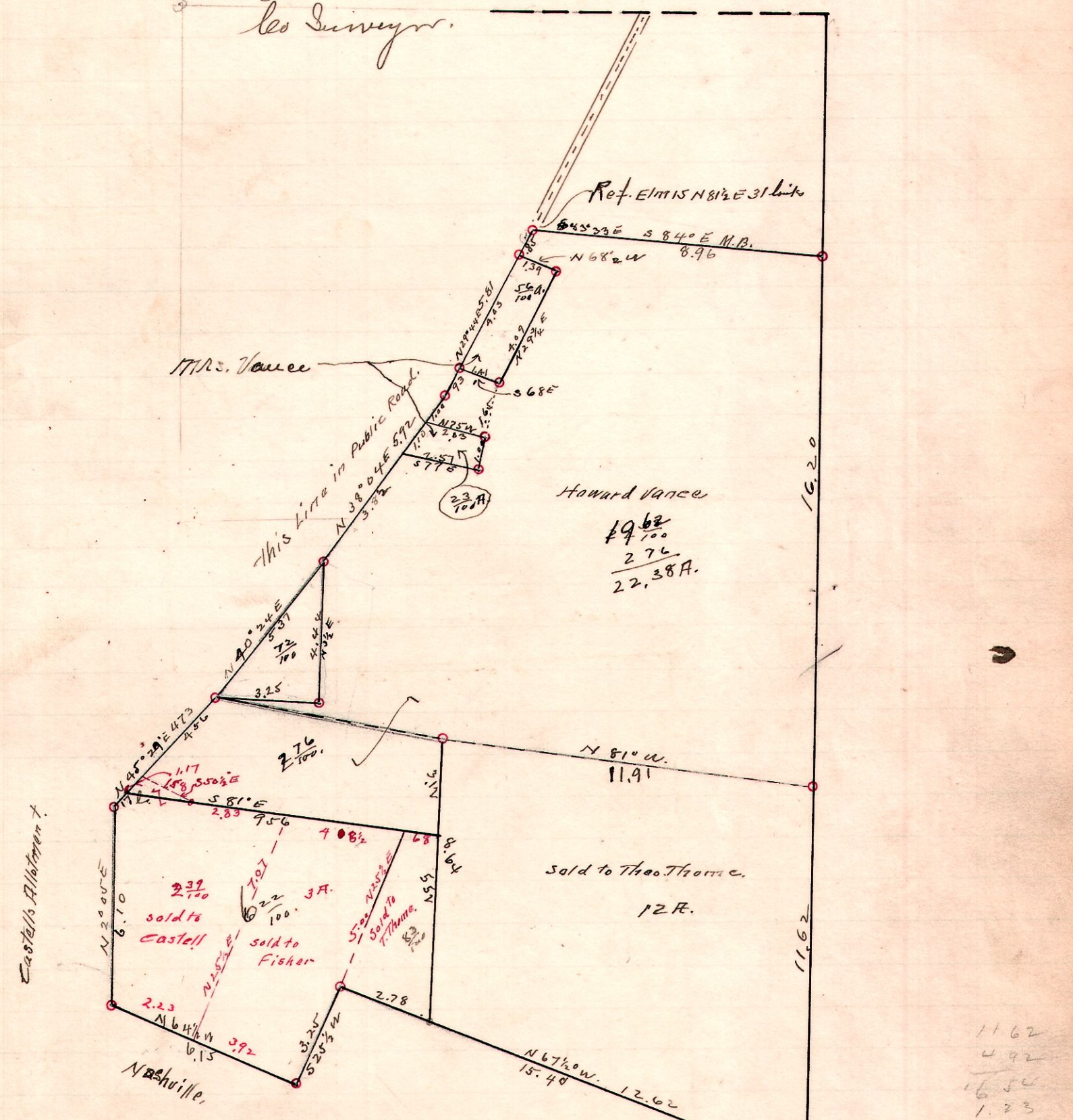


Survey made for O.L. Vance + Howard Vance. to determine division lines and contents of the East part of the South East quarter of Section 13 in Twp. 19 in Range 15. as shown hereon.

Emmett Taylor Flagman.  
Wm Parsons } chainmen  
O.L. Vance. }  
Howard Vance. Ax man.

June. 24. 1913.

W.L. Reidensch  
les Surveyor.



Figures in red show divisions made by Survey.

Jan. - 1914.

W.L. Reidensch  
les Surveyor.

~~75~~ 13  
cemetery

Sec 18

stone SW cor. Sec. 18

24

Sec 19