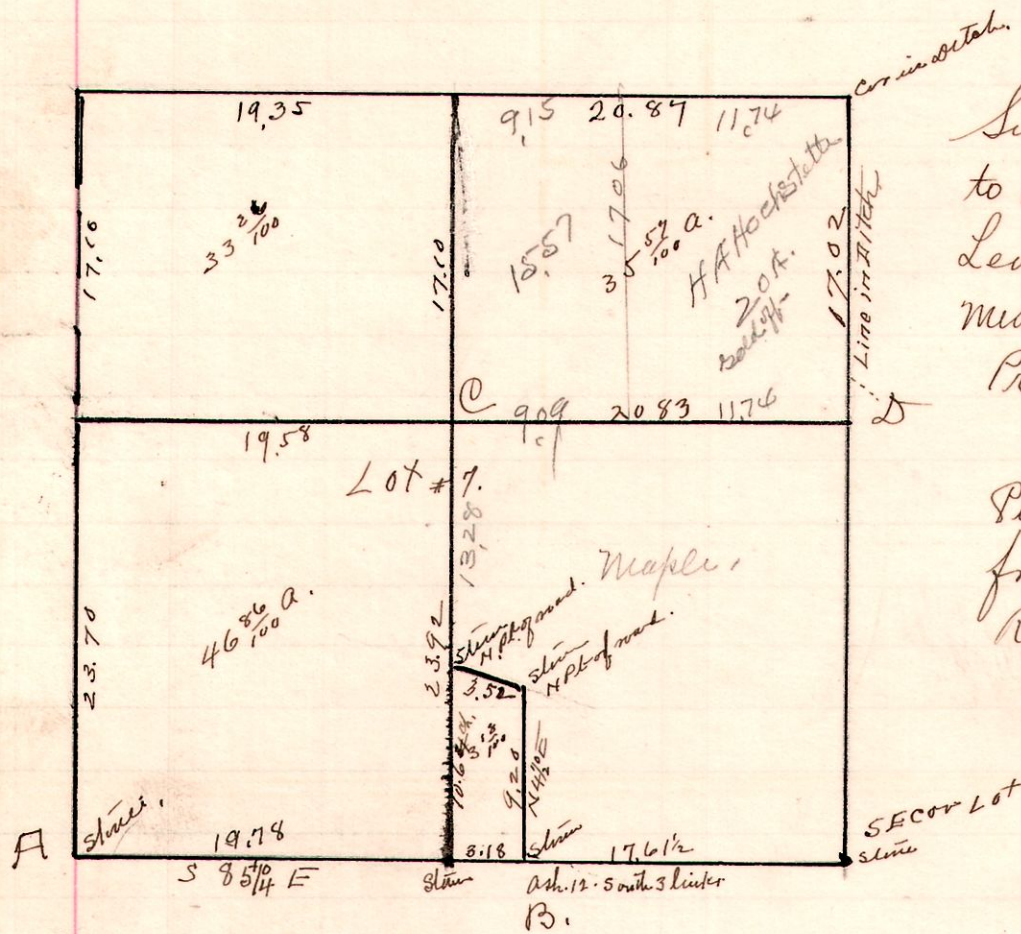


69 1st Apr.

Lot 7.



March 7. 1912.

Survey for Hirs of Mary A. & Abe Dushel to determine lines A, B, C, & D. Leonard Rottman & John Boyd chainmen Measure U.S. Standard.

Present W.C. Maple & Mahlen Dushel

Planted stone at "B" N 85 1/4 W 17.61/2 ch from South east corner.

Ref. Ash 12" South 3 links.

W.L. Reidebach County Surveyor.

3 1/4
46 26
100.04