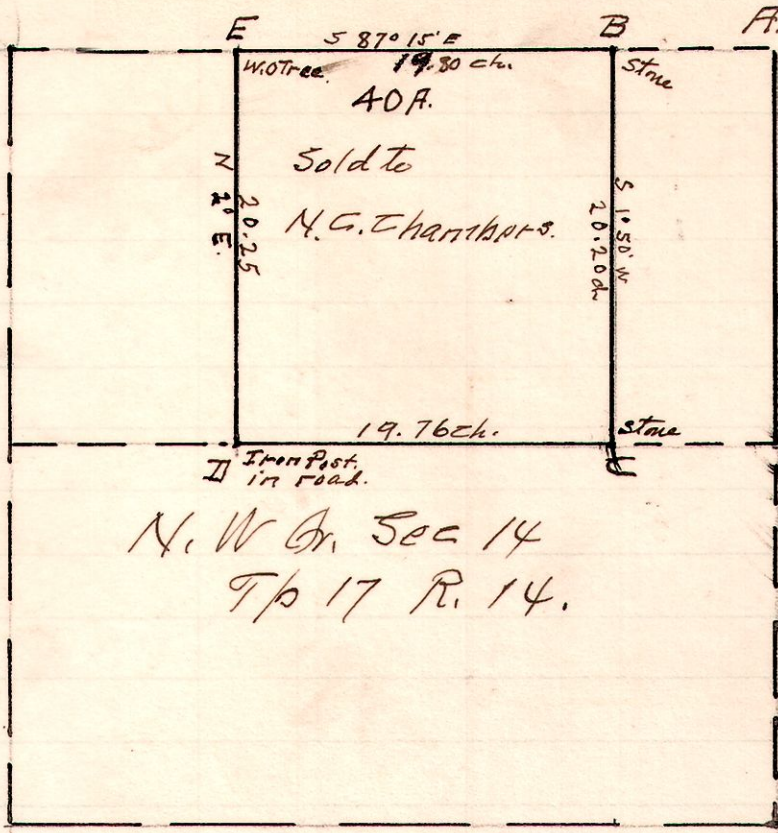


14 17 14 NW Cor. Mid. part.

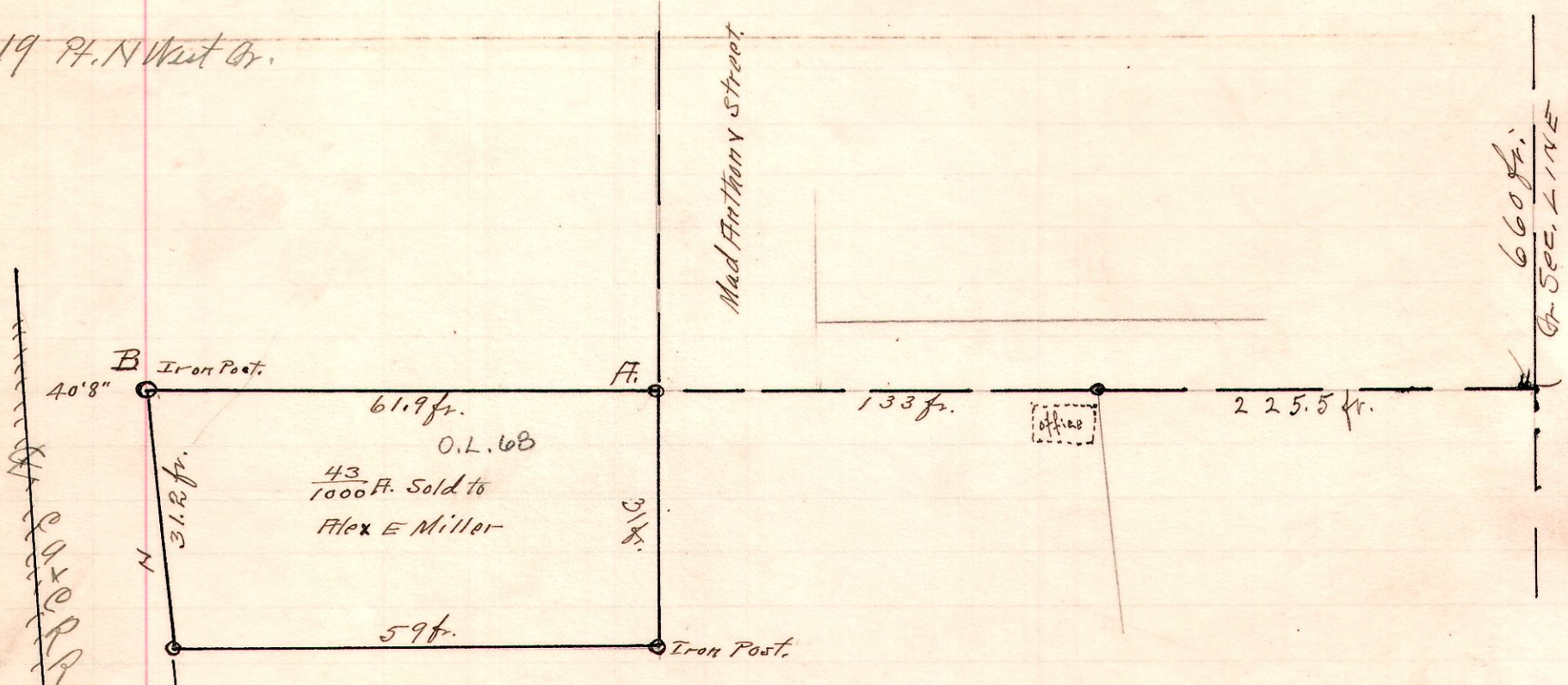


Survey made for A.A. Garrett
and N.C. Chambers to cut off
40 acres as shown on plat
herewith and established
Corner "B" and set stone agreeable
to both parties interested.

Jan. 3rd 1912.

W.L. Reidubach
Co Surveyor.

7 9 19 Pt. N West Gr.



Planing Mill Grounds. Pt. N.W. Gr. Sec. 19. Tp. 9 R 7.

Survey made for W.W. Adams + S.H. Marchand + Alex Miller
cutting off $\frac{43}{1000}$ acre out of Northwest corner of Planing mill
grounds as shown on Plat. Iron posts at each corner
the east line is in line with the west side of Mad Anthony St.
The Line B.C. was established Nov. 3. 1911. see Page 368.

Feb. 17. 1912.

F. A. Reidubach }
W. L. Reidubach } Chairman

W.L. Reidubach Co Surveyor

K 36' 11" @ Iron Post