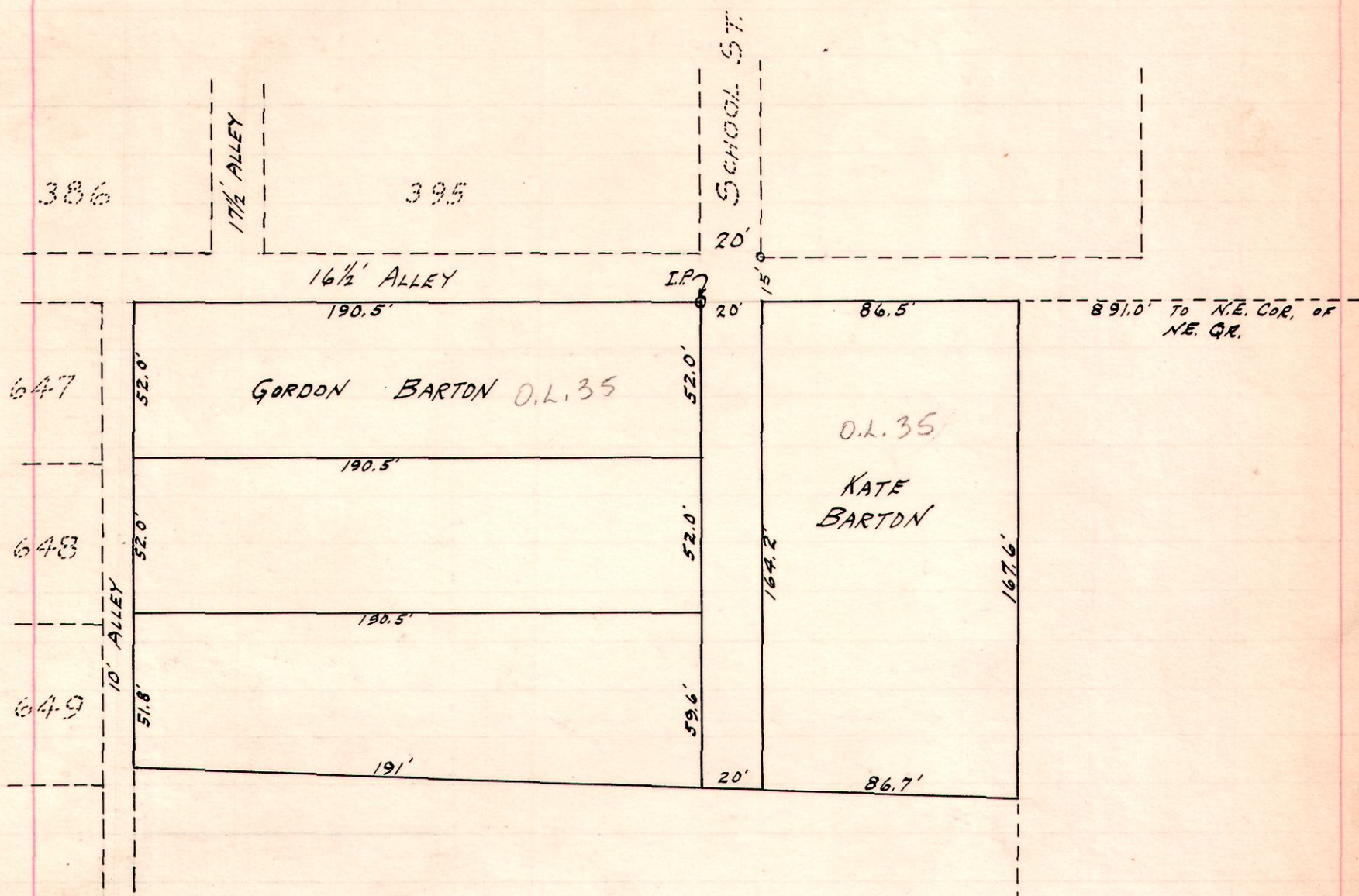


MILLERSBURG

Sec. T. R

19 9 7



Survey made for Kate Barton to lay out lots in
 W. H. T. March 20, 1941
 W. H. T. H.

A survey in the south part of the S.E. quarter of Sec. 26, Twp. 18, Rg. 14, Ripley Twp., Holmes County Ohio.

- A. Iron pin set
- B. Iron pin set; telephone pole N. 54° 30' W. 44.7' brace pole for telephone pole, N. 28° E. 29.5', Electric pole S. 68° E. 17.5', 15" Silver maple S. 15° 15' W. 102.0'
- C. Iron pin set; 20" Shallbark Hickory N. of W. 42', 30" B. Oak N. 130.5'

August 1952

I certify this survey to be correct to the best of my knowledge and belief.

J. T. McClure
 2403

