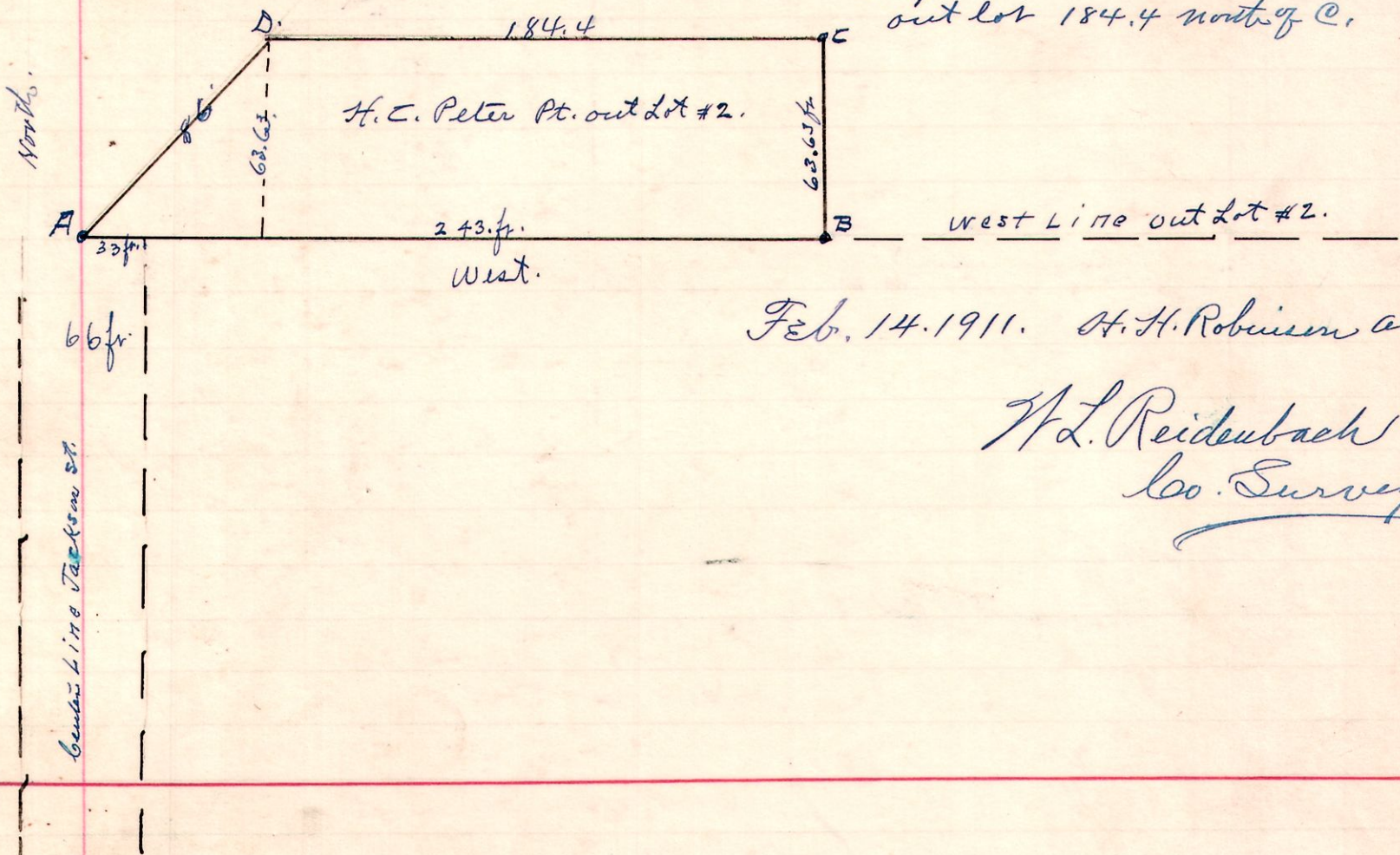


Millersburg.
79

Survey made for H.C. Peter to locate line B.C. according to deed.
corner B is 6.25 ft. south of south end of Barr. Post. (Buggy spoke)
established same from corner A. The N. West corner of out lot #2.

East. The east line given in deed 177.8 ft. is too short as
compared with A.B. struck north line of
out lot 184.4 north of C.



Feb. 14. 1911. H.H. Robinson asst.

H.L. Reidenbach
Co. Surveyor

Survey made for
Moses M Bitschy and Jerry E. Schlabaeh
to divide Lots 11 and 12 in the 4th gr. of
Twp. 10. R 6.

Dec. 29. 1910

H.L. Reidenbach
Co. Surveyor.

