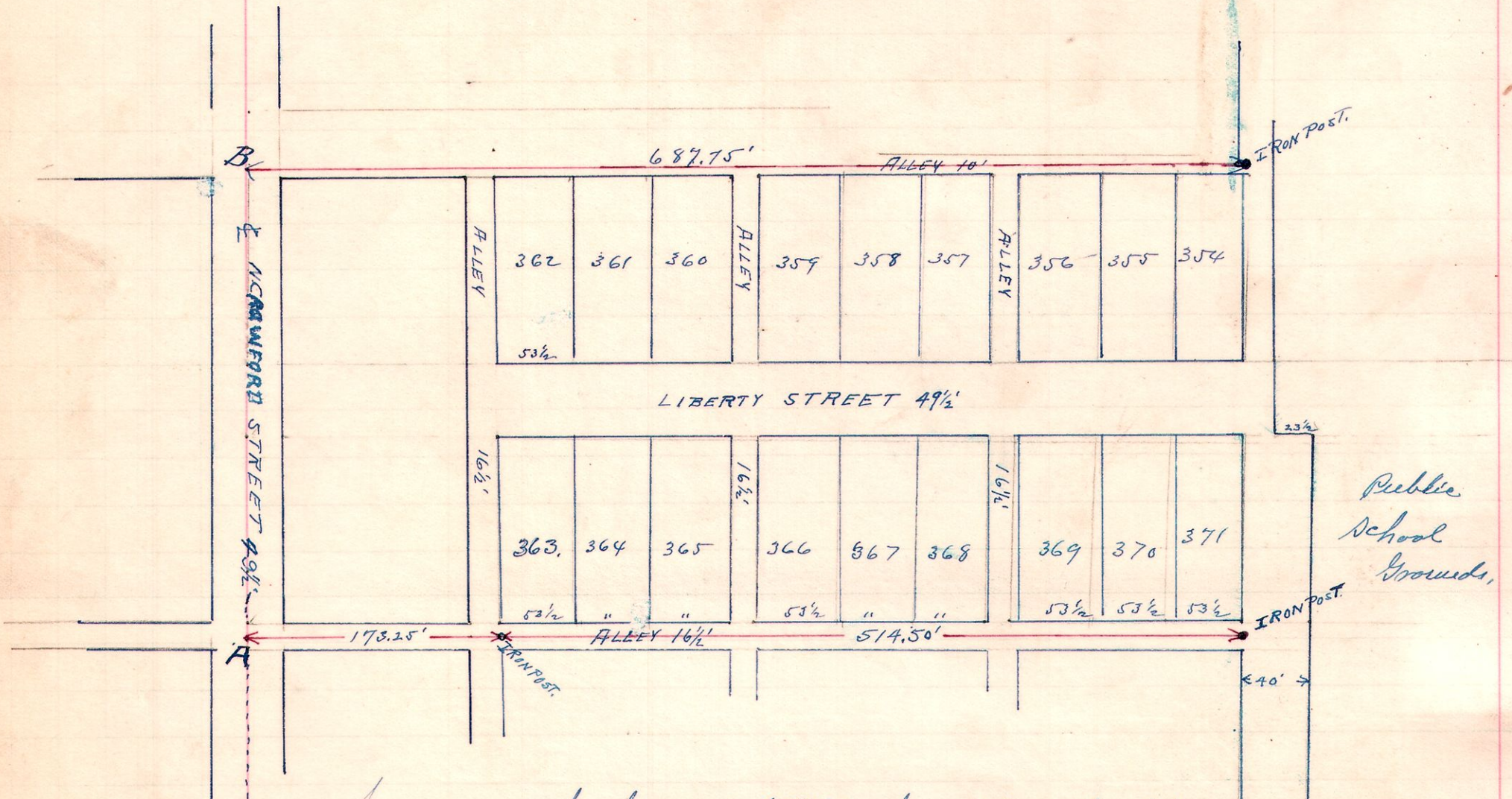


7 9 12 5E

Village of Millersburg



Survey made for Council of Millersburg Village to determine the East line of Cary's Addition of Lots to the Village of Millersburg. To locate side walk in dispute.

I proceeded to find original corner stone of allotment on the South west corner of lot #363 but find that all trace of same is lost. I then proceed to standard corner stones on North East cor Lot #176 and North east corner Lot # 19 and from them locate the center line of North Crawford street and set point in alley line and Street line (Clinton) marked B. I then run east in alley 173.25 feet and set Iron post which corresponds with present occupation of west line of said allotment. I then run east in alley 514.50 feet and set Iron post in middle of alley for East line of said allotment. I then proceed to North Crawford and run from center line of same marked "B" east along the North line of said allotment the same distances and set Iron post in alley. I then check my measurements and find that ~~these~~ agree and correspond at all other parts of said allotment. I then proceed and permanently set my posts to surface of ground.

H. H. Robinson assistant.

W. L. Reidenbach  
County Surveyor

July 9 1910