

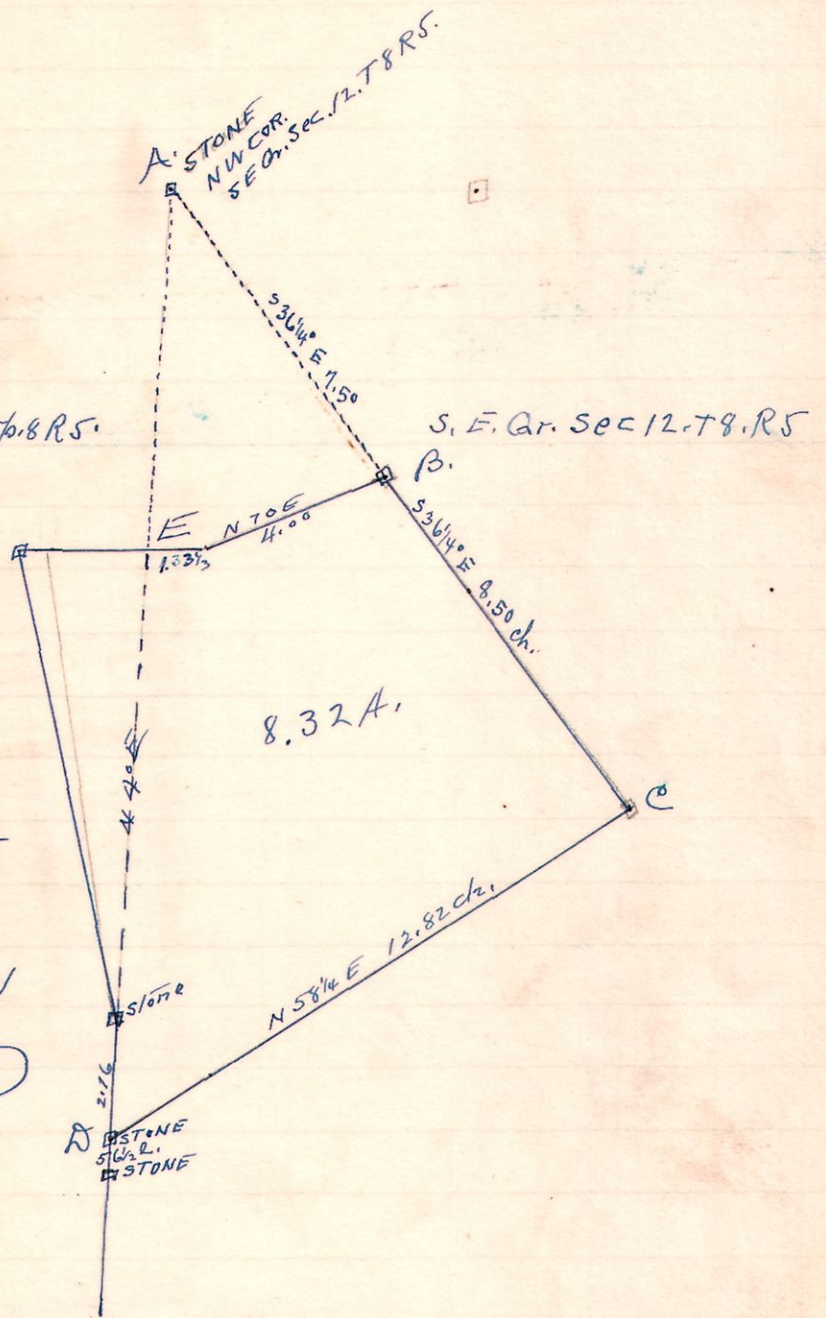
5 8 12 ⁵/₃ E Gr.

Survey made for
Frank & Olga Schlegel and
Moses Beachy. to cut off piece
B. C. D. E.

Frank Schlegel } chairman
Mose Beachy } chairman

W. L. Reidubach
ls. Surveyor

June 10. 1910.



6 9 4²/₉ Lots 7 & 11

Lot 7. 4²/₉ gr. T. 9 R. 6
Eli Miller.

Lot 6. 4²/₉ gr. T. 9 R. 6.

A. NW
COR. STONE.

Lot 12. 4²/₉ gr. T. 9 R. 6.

Lot 11. 4²/₉ gr. T. 9. R. 6

John Bitschy.

Survey made for John Bitschy + Eli Miller to locate corner B.
at A. I found stone in good condition. at 'C' I located corner
from original witness Sug. now 18" N 10" west 33 L. I then run
line A to C according to original notes, a straight line
and set stone 5x6x16 at 'B'.

N.B. at 'B' dug for old corner but could not find trace of anything
and old witness all gone.

John Bitschy H. Seigel Chairman affirmed
H. F. Robinson assistant

Dec 14. 1910.

W. L. Reidubach
ls. Surveyor