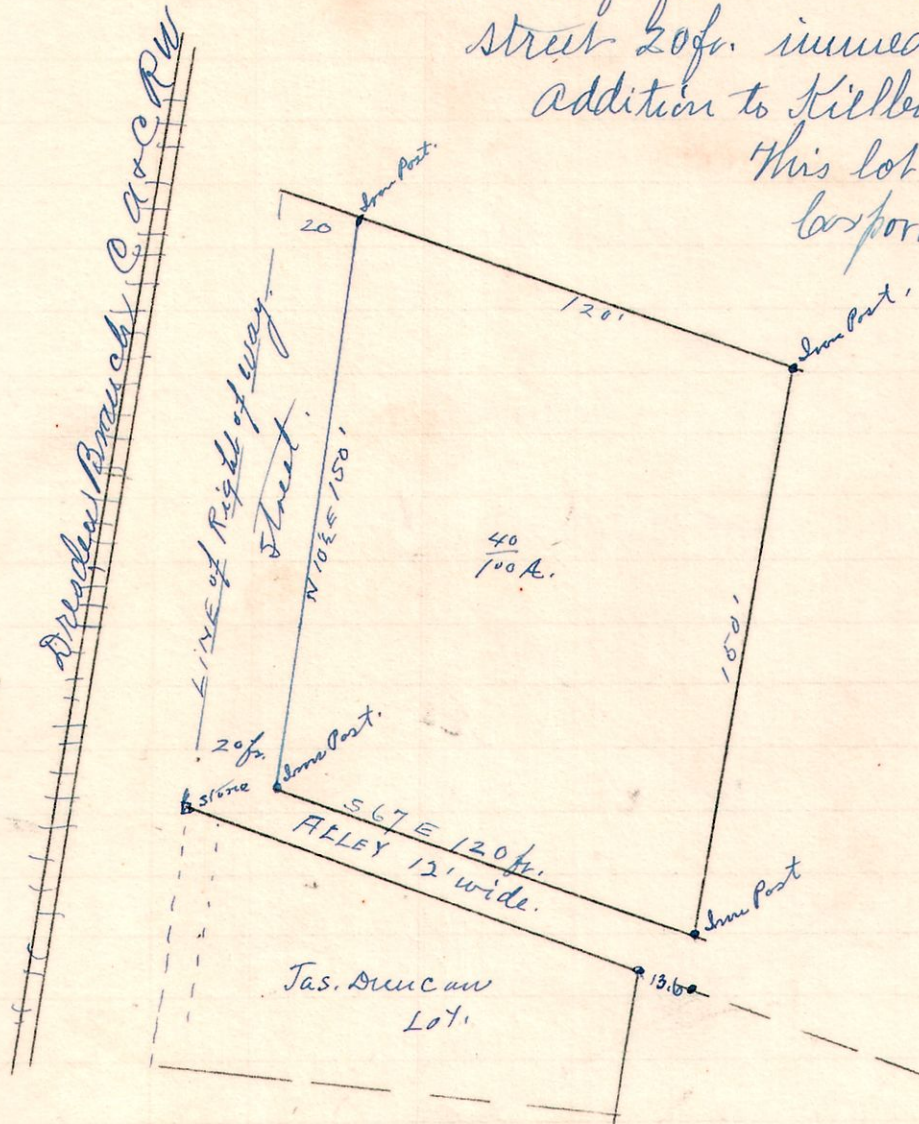


7 8 6 SW

Survey made for Mr. Duncan to lay of a small lot 150 ft. front and 120 ft. deep and alley 12 ft. and street 20 ft. immediately north of Jas. Duncan addition to Killbuck.

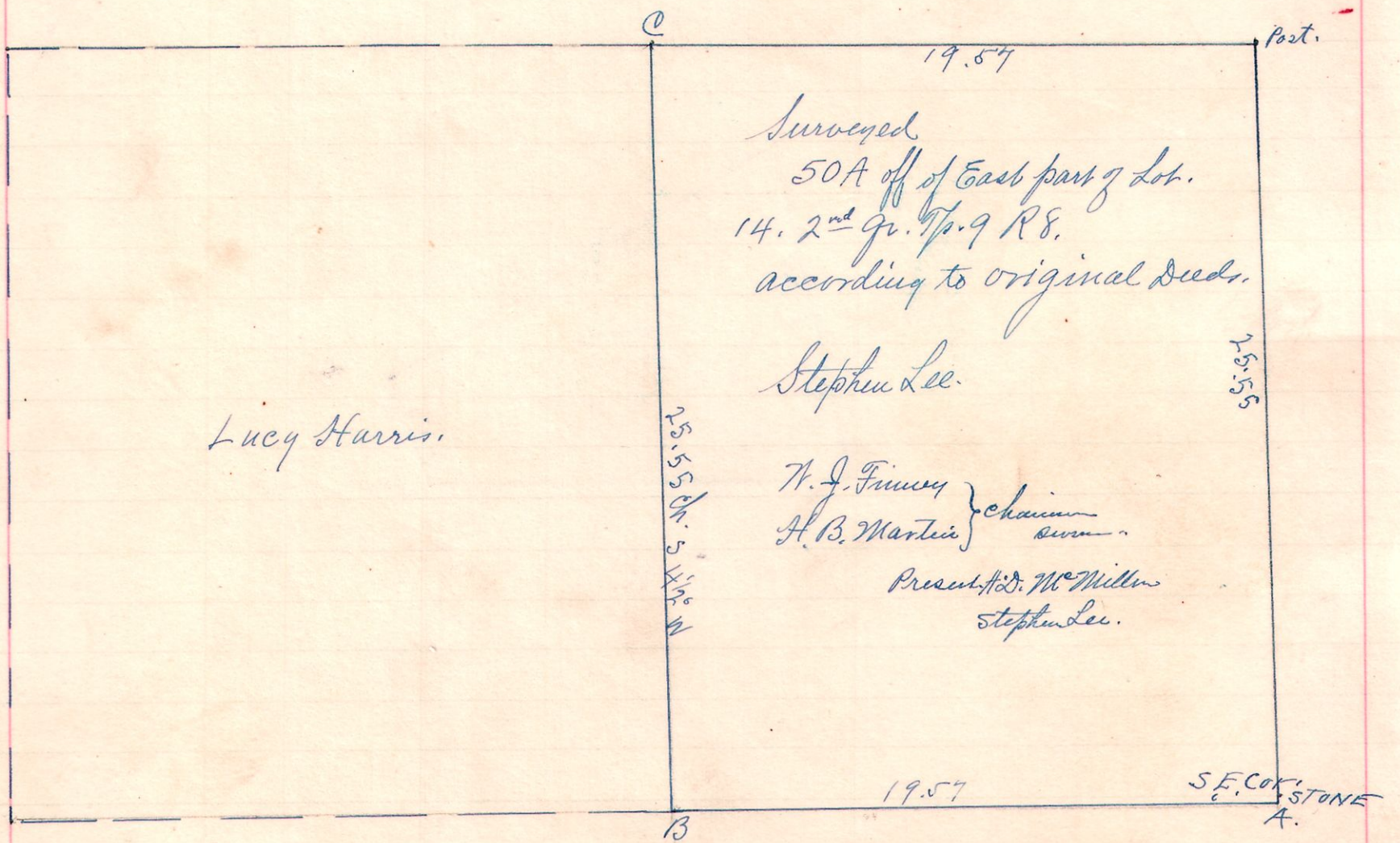
This lot being immediately north of Corporation line.



July 8, 1910

N.L. Reidubach  
County Surveyor

8 9 2nd Or. Lot 14



March 29, 1910

N.L. Reidubach  
County Surveyor