

Holmesville.

Survey made for J. E. McCallaud  
for corners A. + B. Lot 94.

John Kidd + H.L. Reidenbach  
Chainmen.

Prolonged south line of main st.  
117.6' over stone E for cor. A.  
Then turned angle  $31^{\circ}48'$  to Right.  
and measured 50' to B.  
Then measured from stone F, along line  
F. B. 502.2' and verified said corner  
and set iron post for corner.

Oct. 6. 1909.

H.L. Reidenbach Co Surveyor.



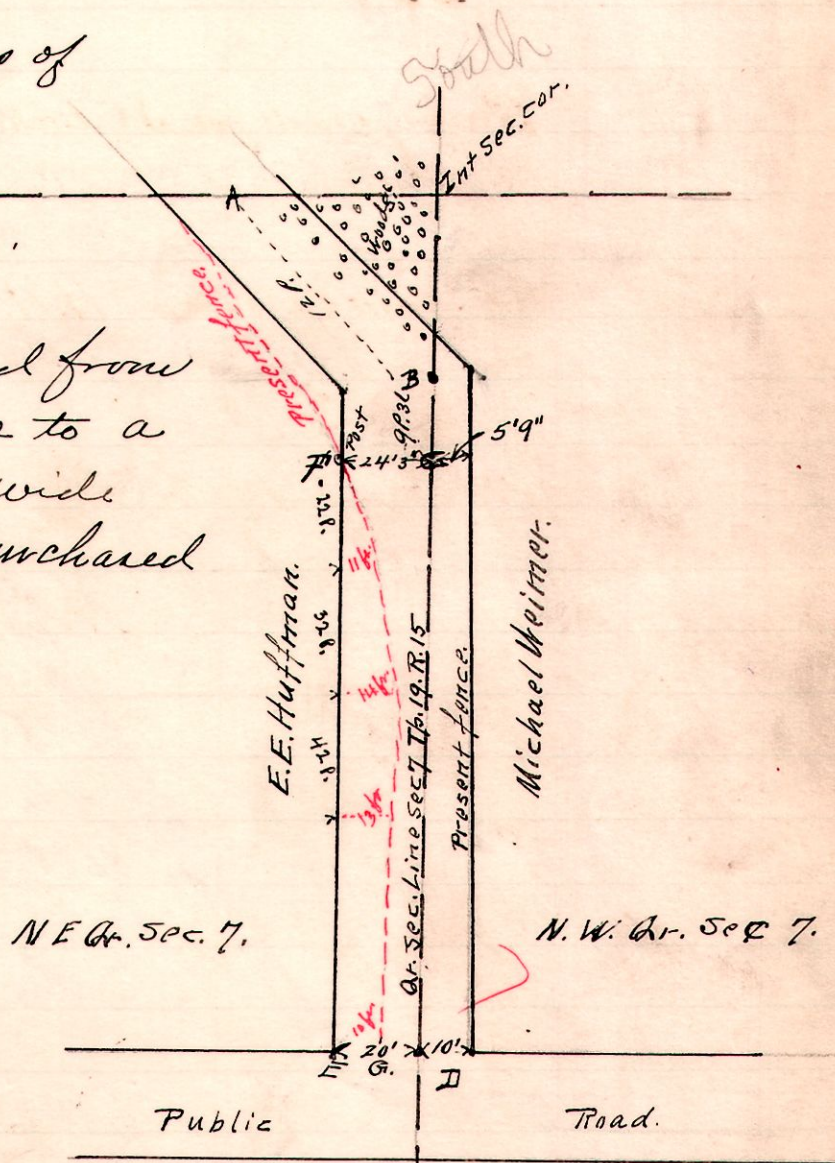
15-19-7.  
TR 261

Survey made for Commissioners of  
Holmes County O.

H. H. Robinson }  
H. L. Reidenbach } Chainmen.

Surveyed for land purchased from  
E. E. Huffman to widen same to a  
Make a County road. 30ft. wide  
Lines F, E, G, shows land so purchased

A to B.	12	perches.
B " C.	9	" 3 links
B " D	84	" 4 "



Oct. 21. 1909.  
H.L. Reidenbach  
Co. Surveyor.

Dwg M. Weimer.