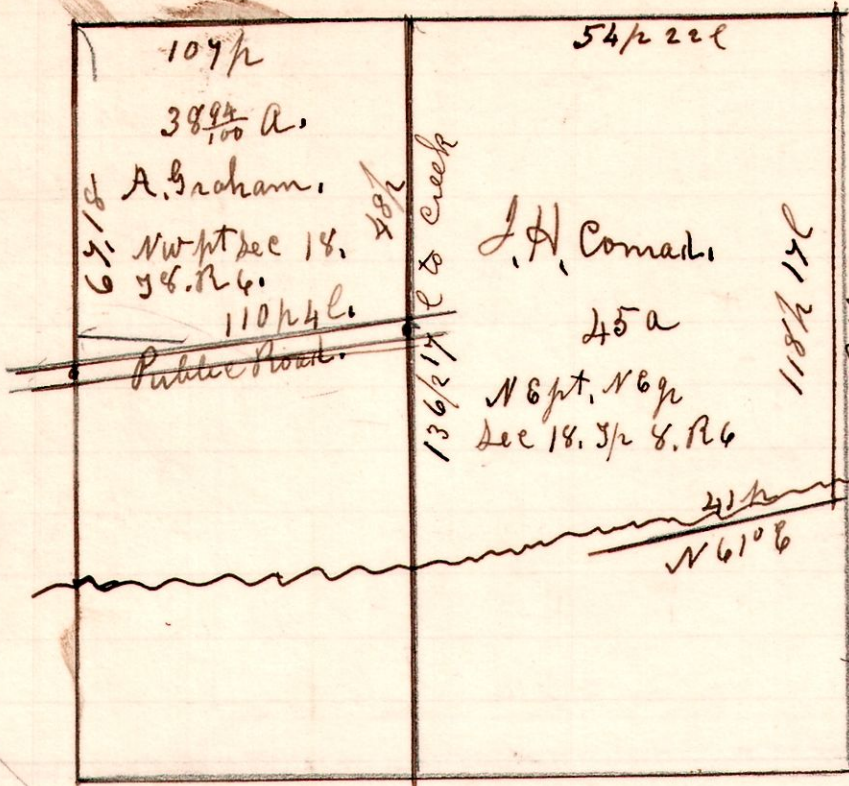


990

6. 18. 18

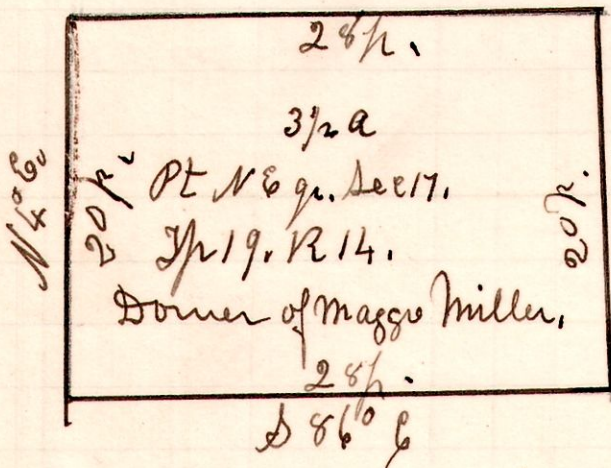


A Survey made for John H. Comair. There is a mistake in the deed therefore could not complete, or make a Satisfactory Survey.

H. H. Robinson  
May 12<sup>th</sup> 1909. Co Surveyor.

991

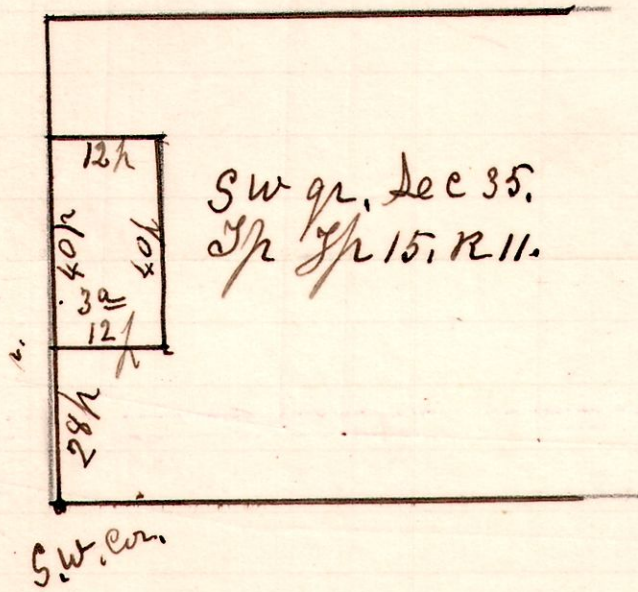
14-19-17.



A Survey of Doner of Maggie Miller assigned,  
May 13<sup>th</sup> 1909.

992

11-15-35



A Survey made for A. Newcomer To locate corner lines of a 3 acre tract of the west side of the south west q. of Sec 35, Tp 15, R 11.  
May 27<sup>th</sup> 1909.

H. H. Robinson