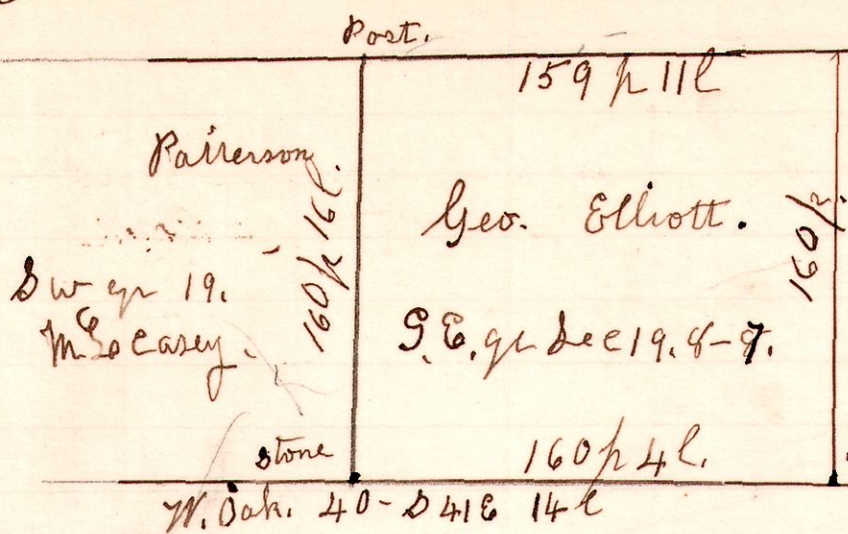


7-8-19

653



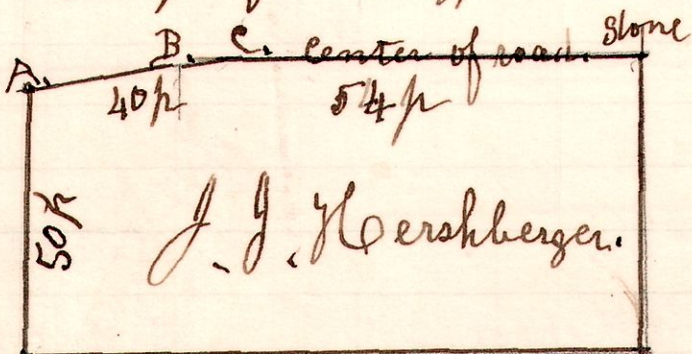
A Survey made for Elliott Casey + Patterson.

March 30th 1908.

654

5 8 10

S.E. q. of sec 10. Sp 8. R. 5.

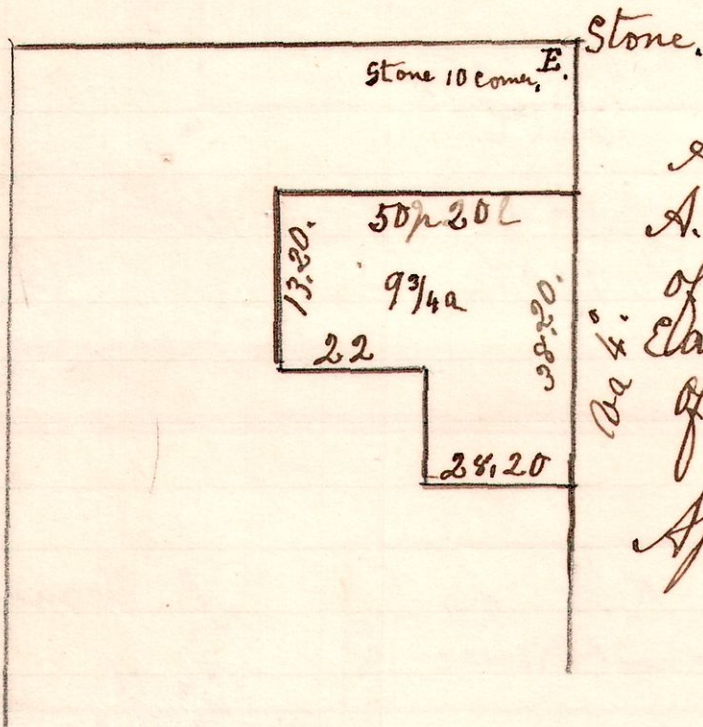


Set Stone at A-B-C.
Apr 2^o 1908.

H. H. Robinson.
Co Surveyor.

7 8 9

655



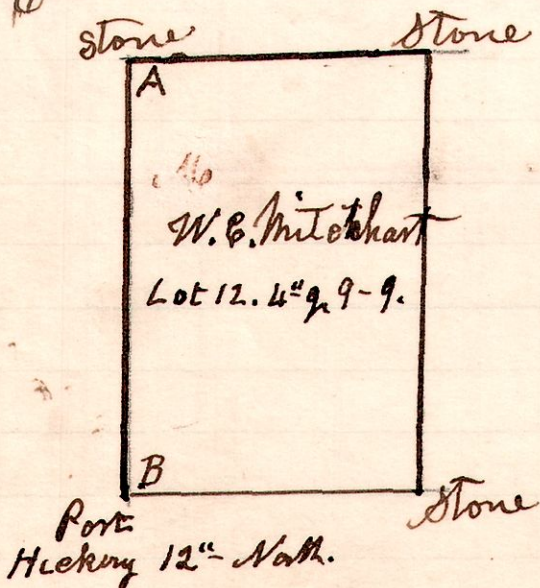
A Survey made for John A. Hooyman. Being part of the East part of the East 1/2 of South west q. of Section 9, in Sp 8. R. 5.

April 7th 1908.

H. H. Robinson.
Co Surveyor.

656

9 9 12-13



A Survey made for W. E. Mitchhart. to locate the lines of Lot 12.

April 6th 1908

H. H. Robinson
Co Surveyor.