

A 8 17 98

SR 93

No 621



Commenced at a Stone in the Public road, thence as shown in plat.

The above plat represents an alteration of the State Road from Coshocton to Shanesville, O. petitioned for by George M. Doman & others and was by me surveyed April 24<sup>th</sup> 1907.

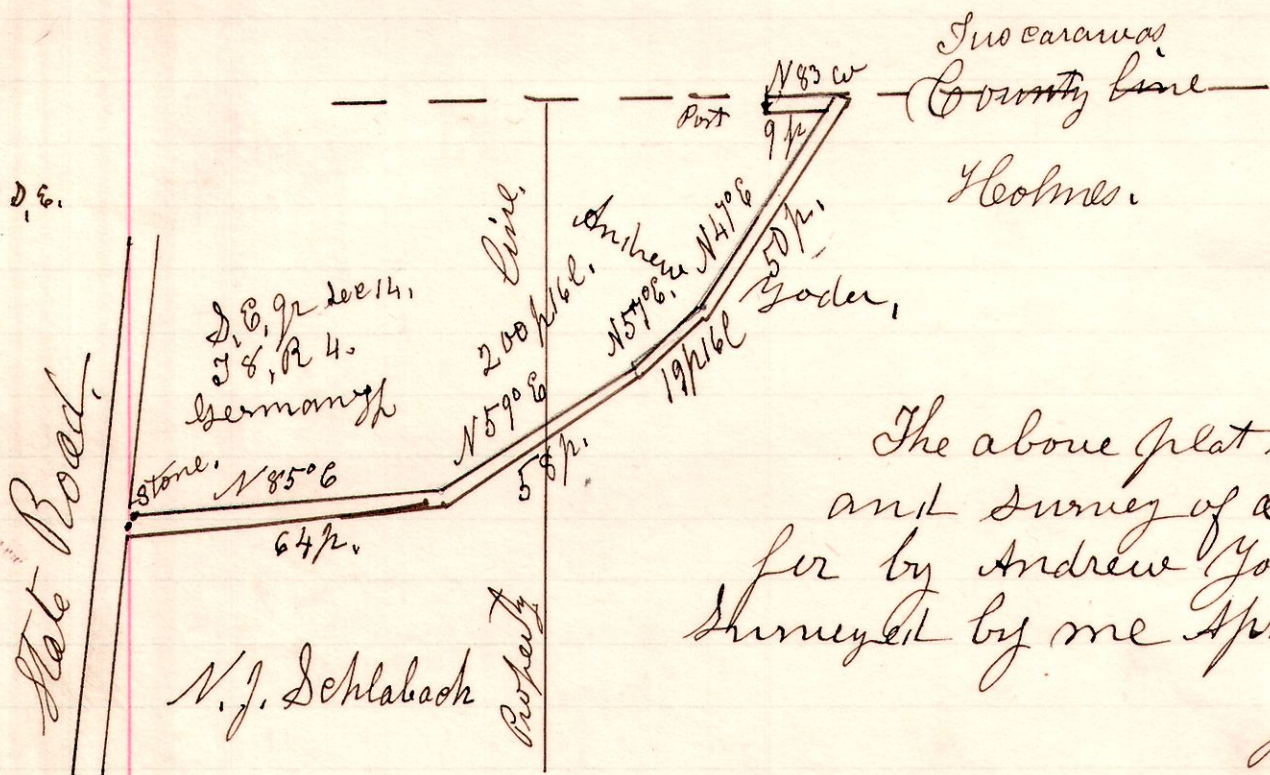
H. H. Robinson  
County Surveyor.

Viewers	Chain carriers
J. W. Shafer	M. Shutt
W. A. Horner	Wm. Yakley
Jonah. Shutt	Marker
	A. Aulpieter

CR 108

4 8 14 20

622



The above plat shows the view and survey of a County Road petitioned for by Andrew Yoder & others, as surveyed by me April 25<sup>th</sup> 1907.

H. H. Robinson  
County Surveyor.

Viewers,	Chain carriers.
J. W. Shafer.	C. A. Fair.
W. A. Horner.	Dan. Muehldrehaus.
Jonah Shutt.	Marker
	J. C. Yakley.