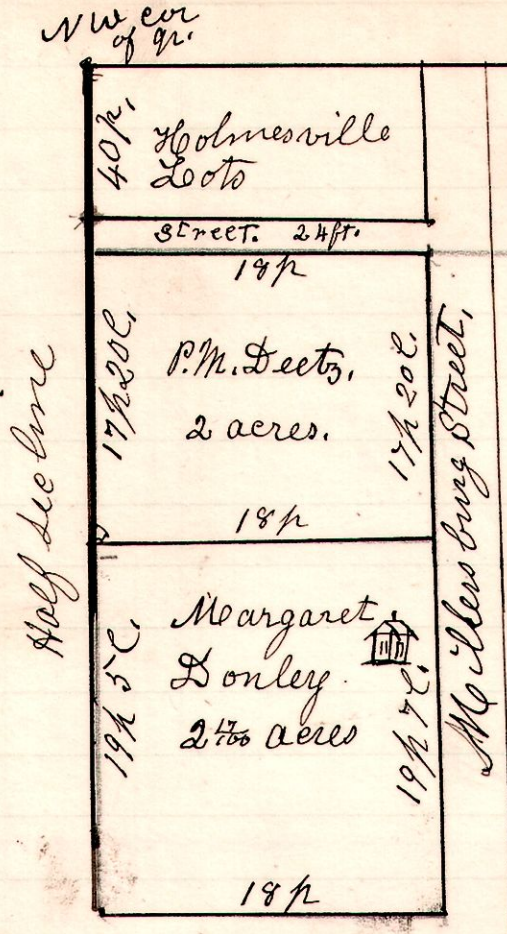


No 613.

13 13 3. S.E.



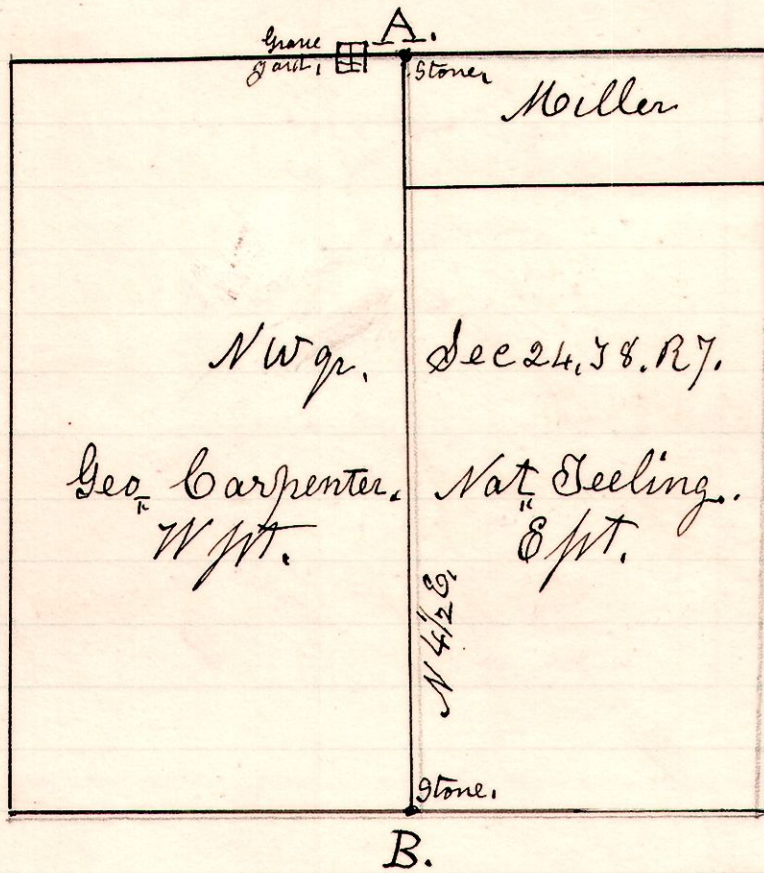
A Survey made for P.M. Deets and Matt Donley being part of the north part of the South East quarter of Section 3. T.P. 13. R. 13.

January 18th 1907. H. H. Robinson County Surveyor.

Chain Carriers
John Kidd
H. H. Robinson

No 614

7 8 24 nw.



A Survey made for Mel Carpenter and Nat. Seeling to locate the line A. B. with reference to standing timber.

Commenced at A and ran to B and staked the line, ran from stone corner previously made & established Febr. 5th 1907.

H. H. Robinson County Surveyor.