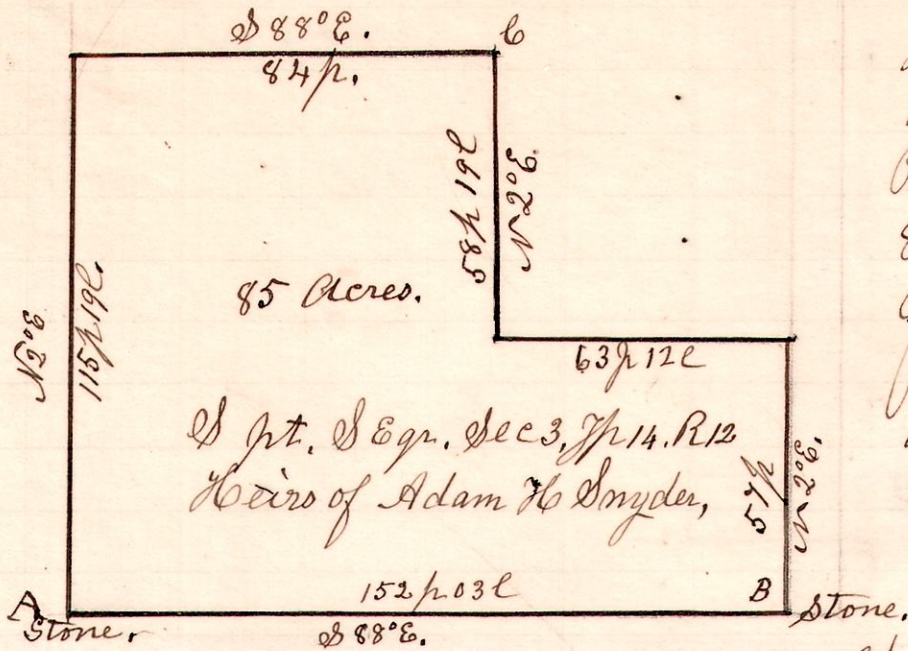


12 14 3 S.E.

No 528.



A Survey made for the widow and heirs of Adam H. Snyder decd. as directed in his will, recorded in the Probate Court records, being 85 acres off the South part of the South East quarter of Section 3 in Township 14 of Range 12, of which 15 acres is timber land. Sept 15<sup>th</sup> 1903.

H. H. Robinson  
County Surveyor.

Chain Carriers.  
Eugene Weyer.  
A. W. Fetter.

- A. Dugan 30" - N 33 1/2° E, 33 c.
- B. Locust 16" - S 2° E - 8 1/2 c.
- C. Walnut 20" - N 34 1/2° E - 3 p. 23 c.

4 10 lot 29.

No 529.



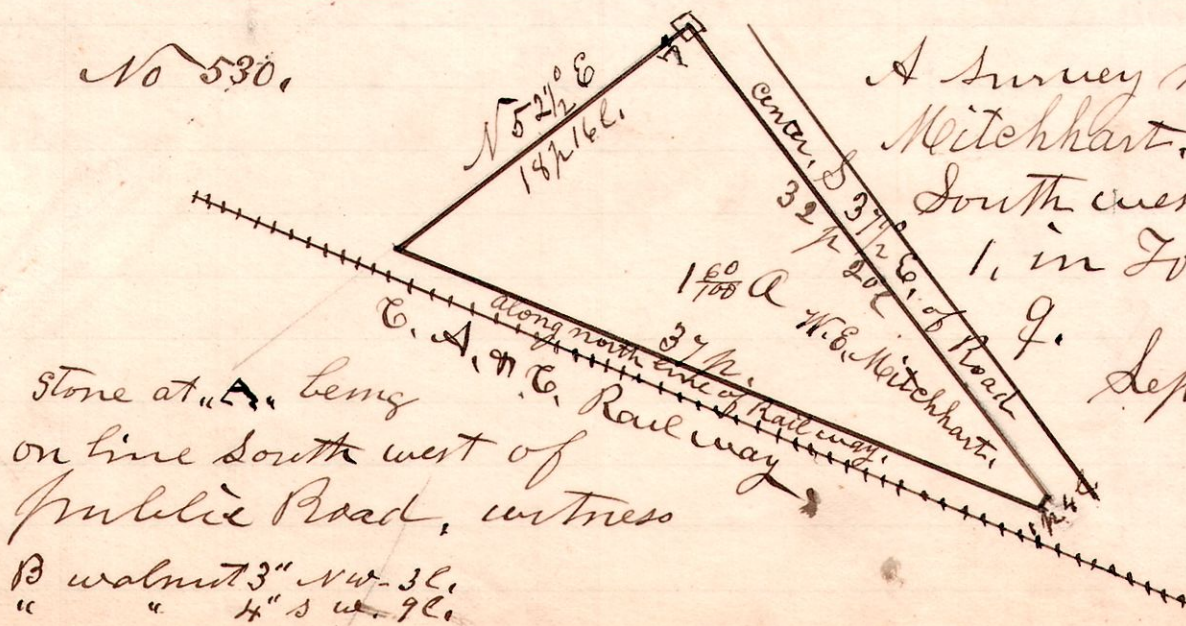
A Survey made for William Metz to locate the line A.B. There being a corner stone at the corner of lots 20-21-28 & 29, 3 quarter in Township 10, of Range 4, and one of the original witness trees standing, I ran the line west to the north west corner of lot 29, then established the line from A to B.

Witness for A. James Cherry 14" - N 53 1/2° E, 31 c.  
Present, William Metz, Edward Zeller;  
September 22<sup>nd</sup> 1903.

Blosser, Roller.  
H. H. Robinson  
County Surveyor.

9 8 / SW.

No 530.



A Survey made for W. E. Mitchhart, being part of the South west quarter of Section 1, in Township 8, of Range 9. Sept 23<sup>rd</sup> 1903

H. H. Robinson  
County Surveyor.

Stone at "A" being on line south west of Public Road, witness

- B. Walnut 3" N 4° - 3 c.
- " " 4" S W - 9 c.