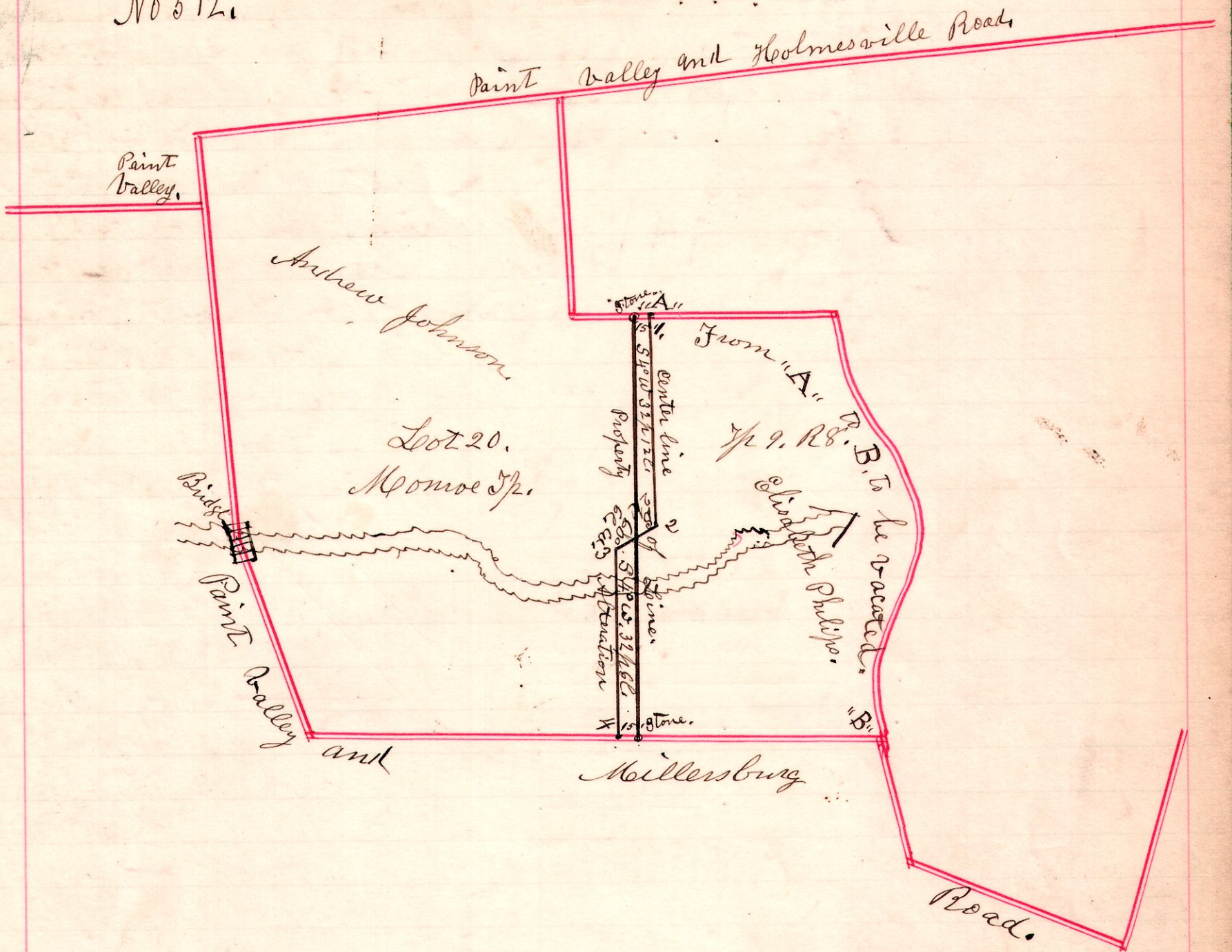


8 9 lot 20.

No 512.



The above plat represents the survey of a proposed alteration of a county road as prayed for by L. J. McClaran and others. Commencing for said alteration 15 feet east of a stone, the north west corner of Elizabeth Philips land; Thence South 4° west parallel with the west line of the Philips land in lot 20, 1st gr. Tp 9, R 8, 32 perches and 12 links to a post; Thence South 60° west 2 perches and 6 links to a post on the Andrew Johnson land, said post being 15 feet west of Johnsons East line; Thence South 4° west 32 perches and 12 links to end in the Paint Valley and Millersburg Road, The center line of the road alteration to end 15 feet west of the south west corner of Thomas Smiths land, There is a stone planted at said corner.

July 23rd 1903

H. H. Robinson
County Surveyor.

Viewers
John Hastings,
James Burns,
C. H. Crawford,

Chain Carriers,
James Burns,
C. H. Crawford,

Marker
John Hastings,