

13/3 8 NW
No 502

Maple 16. S 87° 6. 100



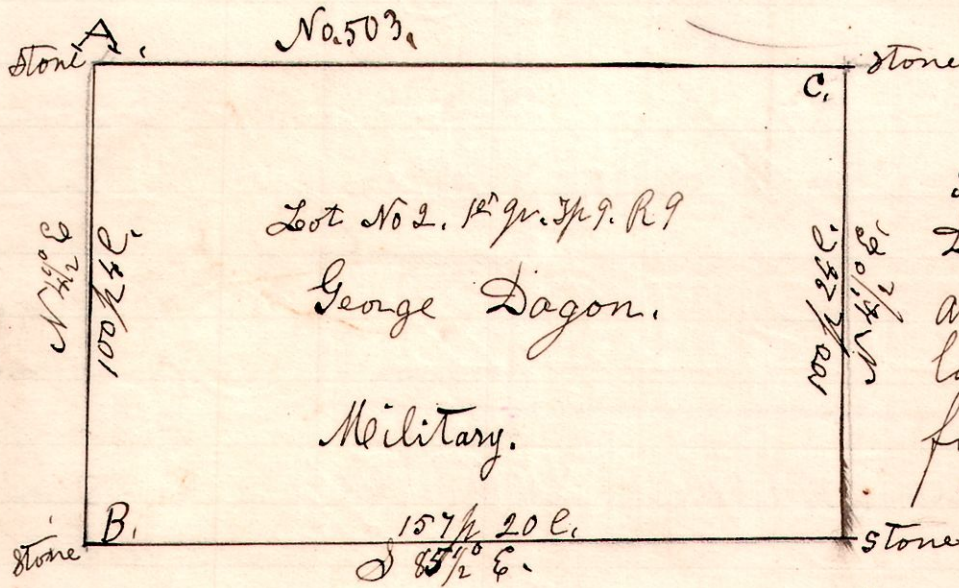
NW 1/4 Sec 8. Tp 13. R 13.

Black Walnut 5' - 120 ft
N 45° W 1 1/2 Cms.

A survey made for William Miller and Detman to locate corners and line between the north west quarter of Section 8. Township 13. of Range 13, and the north east quarter of Section 7. Tp 13. R 13. Established corners, took witness, and traced and staked line.

May 14th 1903,
H. H. Robinson
County Surveyor.

9 9 12th 2



Lot No 2. 12th q. Tp 9. R 9
George Dagon.

Military.

S 20° E. 75 C.

A survey made for George Dagon to establish corners and lines of military lot number 2, in the first quarter of Township number 9. of Range 9.

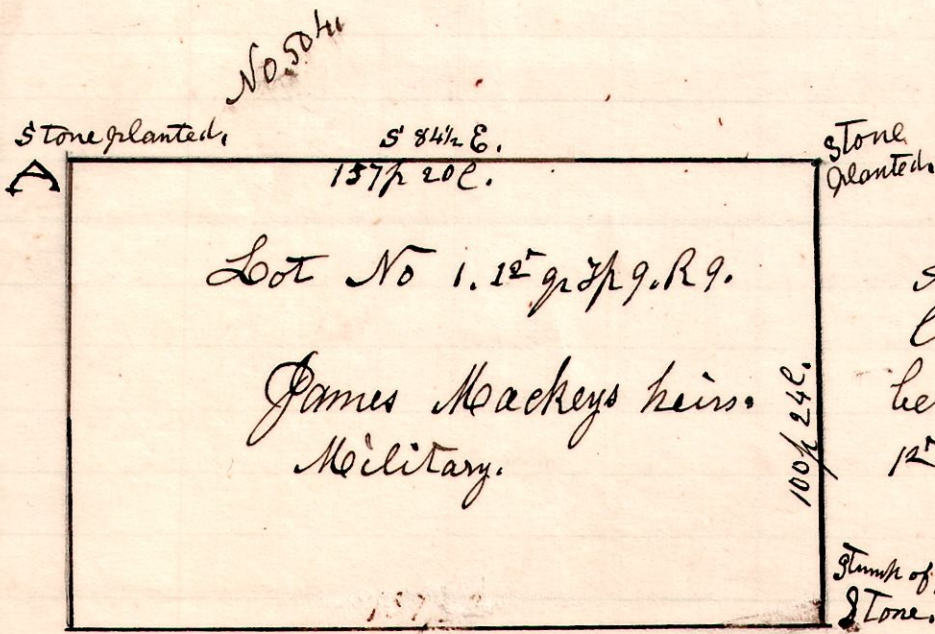
June 9th 1903.

A. W. O. 10° N 34° E. 28 C.

B. Chestnut, 20" S 20° E. 75 C. Planted large stone at all corners.

C. W. O. 8" - E. 18 1/2 C.

9 9 12th 1



Lot No 1. 12th q. Tp 9. R 9.

James Mackey's heirs.
Military.

A survey made to establish corners, and line between lots 1 & 2, in the 12th quarter of Township 9. of Range 9.

June 9th 1903,
H. H. Robinson
County Surveyor.

A chestnut 20" S 20° E - 75 C.