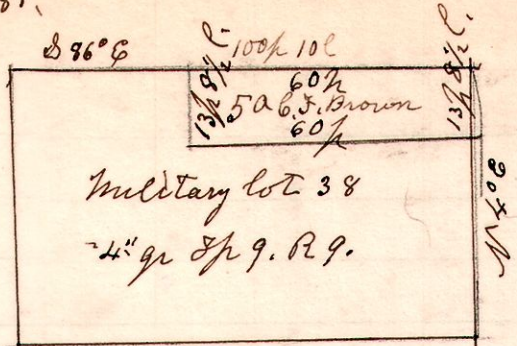


9 9 38. 4th qr

No 481.

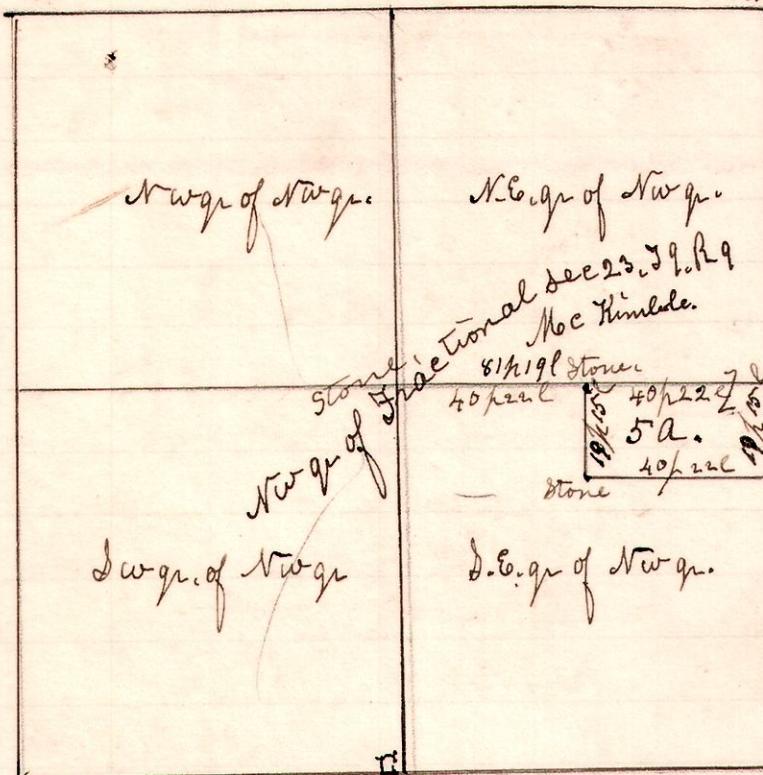


A survey made for C.S. Brown, being 5 acres in north east corner of lot number 38, in the 4th quarter, in Township number 9, of Range number 9.
March 31st 1903.

H. H. Robinson
County Surveyor

Chain carriers,
George Purdue,
Philip Brubaker.

9 9 23 NW, No 482.



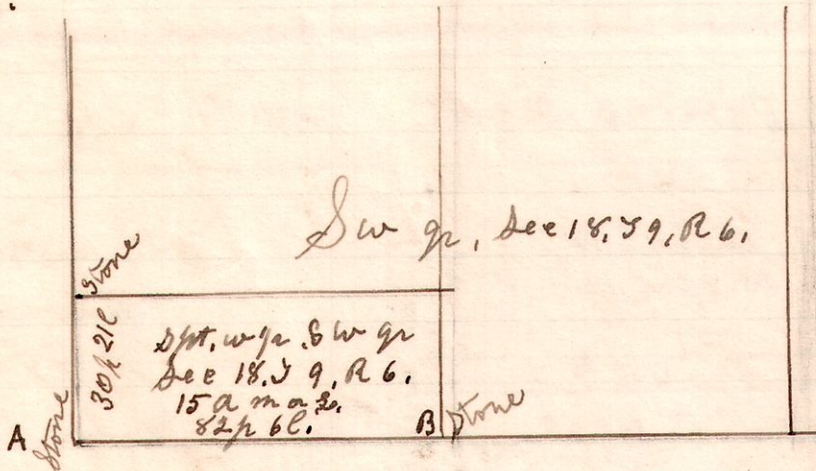
A survey made for Mc Kimble, being 5 acres in the north east part of the south east quarter of the north west quarter of Fractional Section 23, in Township 9, of Range 9.
March 31st 1903.

H. H. Robinson
County Surveyor.

Chain carriers, George Purdue & Philip Brubaker.

6 9 18

No 483.



A survey made for Ruben Carpenter and Mc Scheehy, being the south part, of the west half of the south west quarter of Section 18 in Township 9, of Range 6, made to locate the line A.B.

April 2nd 1903.
H. H. Robinson
County Surveyor.

Chain carriers
Ruben Carpenter
Michael Scheehy,
Flag.
Young Carpenter.