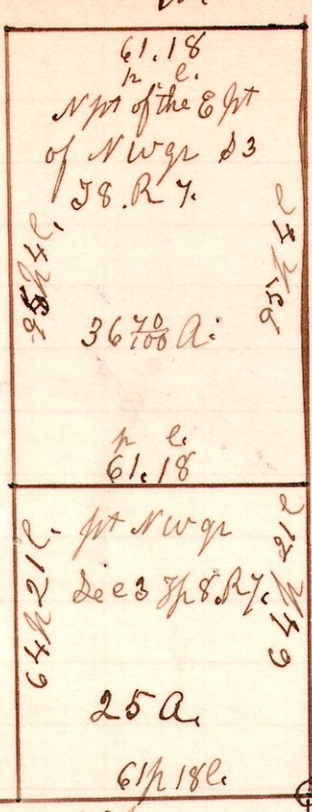


783 X

Sta	Course	Distance
1	N 54° E	36.39 1/2
2	S 89° E	20.23 1/2
3	N 38° E	44.
4	N 78° E	5.
5	S 25° E	27.
6	N 77° E	16.
7	N 36° E	13.
8	North	10.
9	N 11° W	18.
10	N 40° E	6.
11	S 70° E	16.
12	N 70° E	10.
13	N 43° E	6.
14	N 1° E	10.
15	N 3° E	9.
16	N 40° E	8.
17	S 72° E	4.
18	S 35° E	14.
19	S 62° E	10.
20	0 to line of gr	

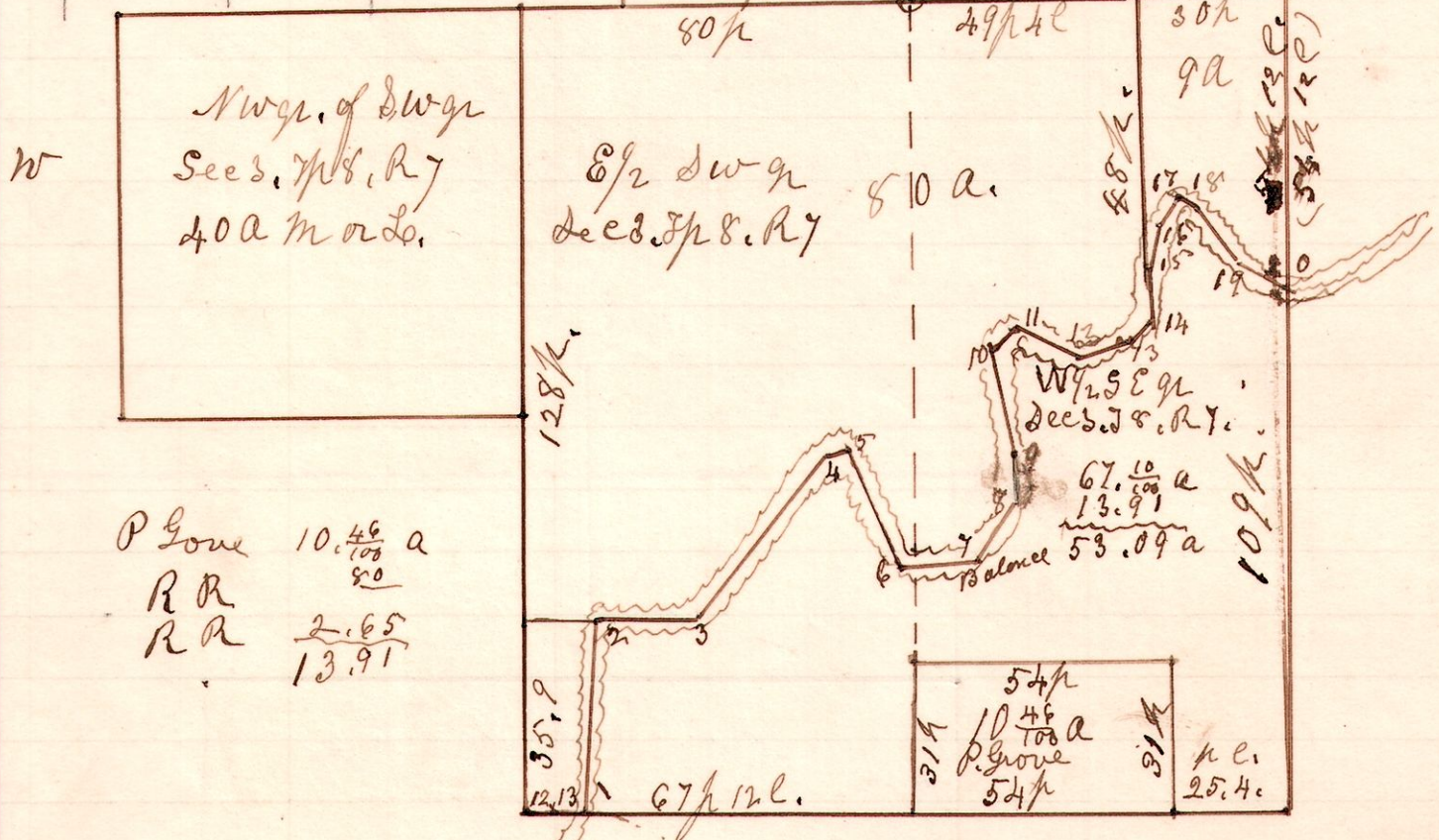
Each sta. No. 1 to 3900 E.  
do " 3898 25 N 13 E.



No 452

163.9  
54  
109.9

163.9  
54  
108.22

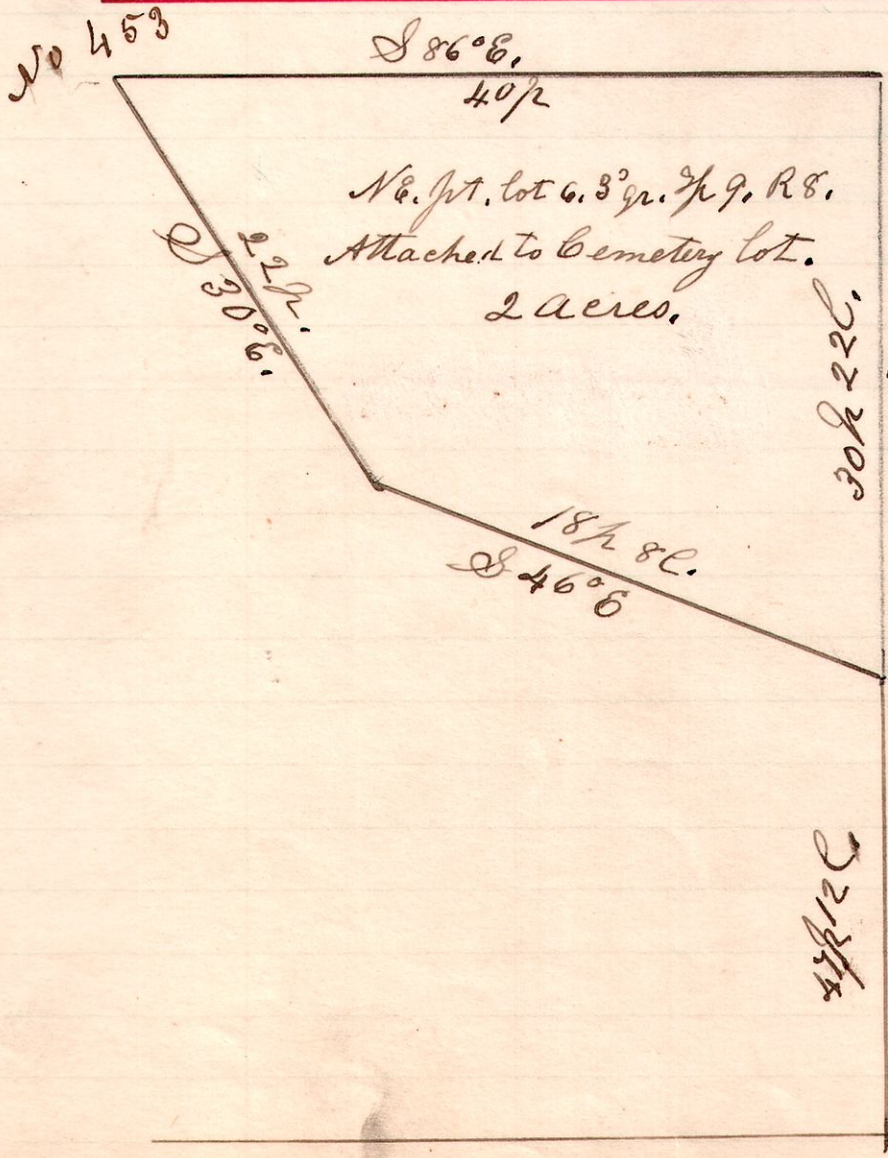


The above plat represents parts of Sec 3. in T 8. of R 7.  
March - 1871 (variation 1/2 to the right)

S. Robinson Surveyor.

The above is a correct copy of survey made by Samuel Robinson  
H. H. Robinson  
County Surveyor.

89 lot 6.3 gr



A survey made for  
S. R. Williams being part  
of the East part of lot No  
6. in the 3<sup>rd</sup> quarter  
of Township 9. in  
Range 8. (Military)  
September 10<sup>th</sup> 1902.

H. H. Robinson  
County Surveyor.