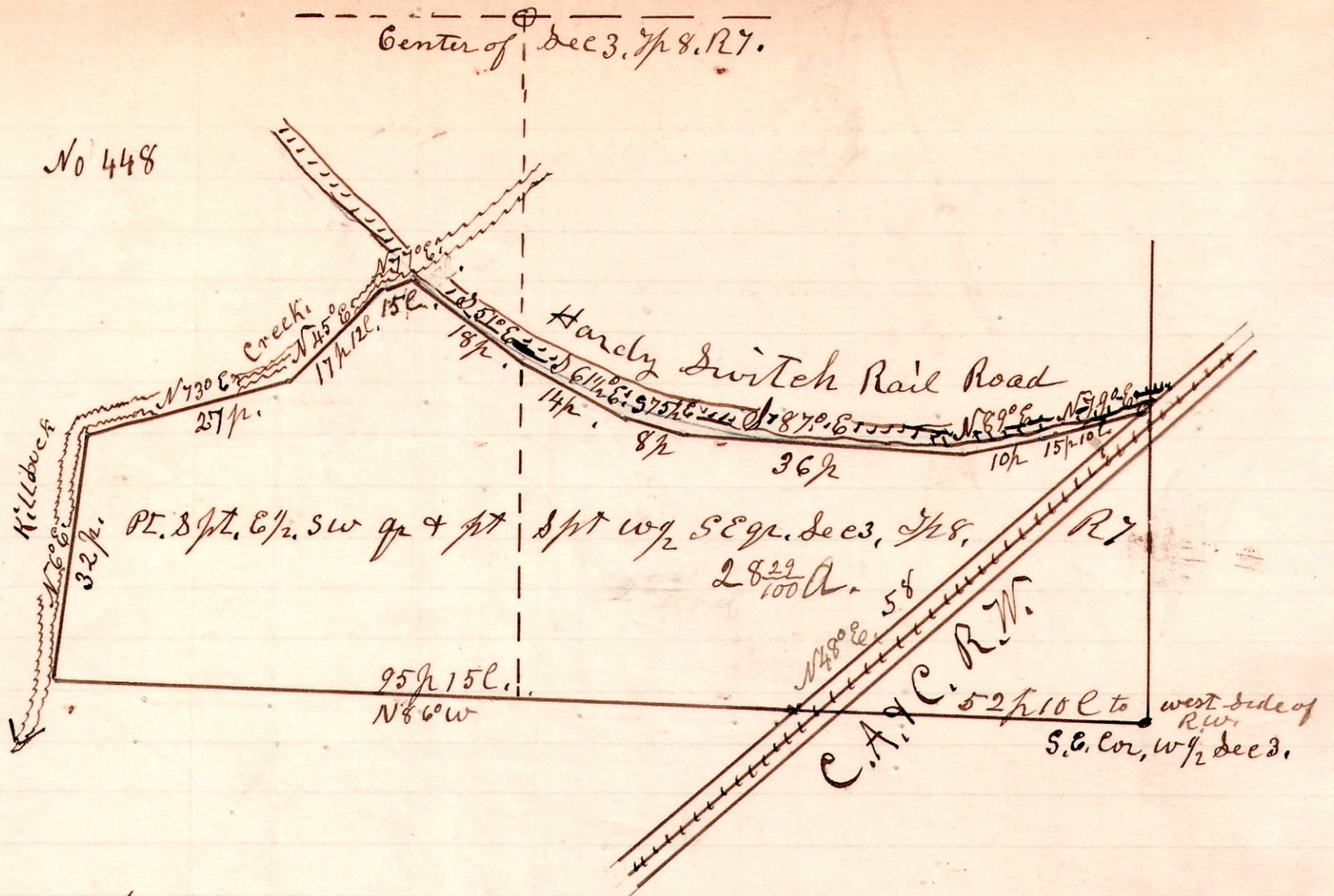


793

No 448



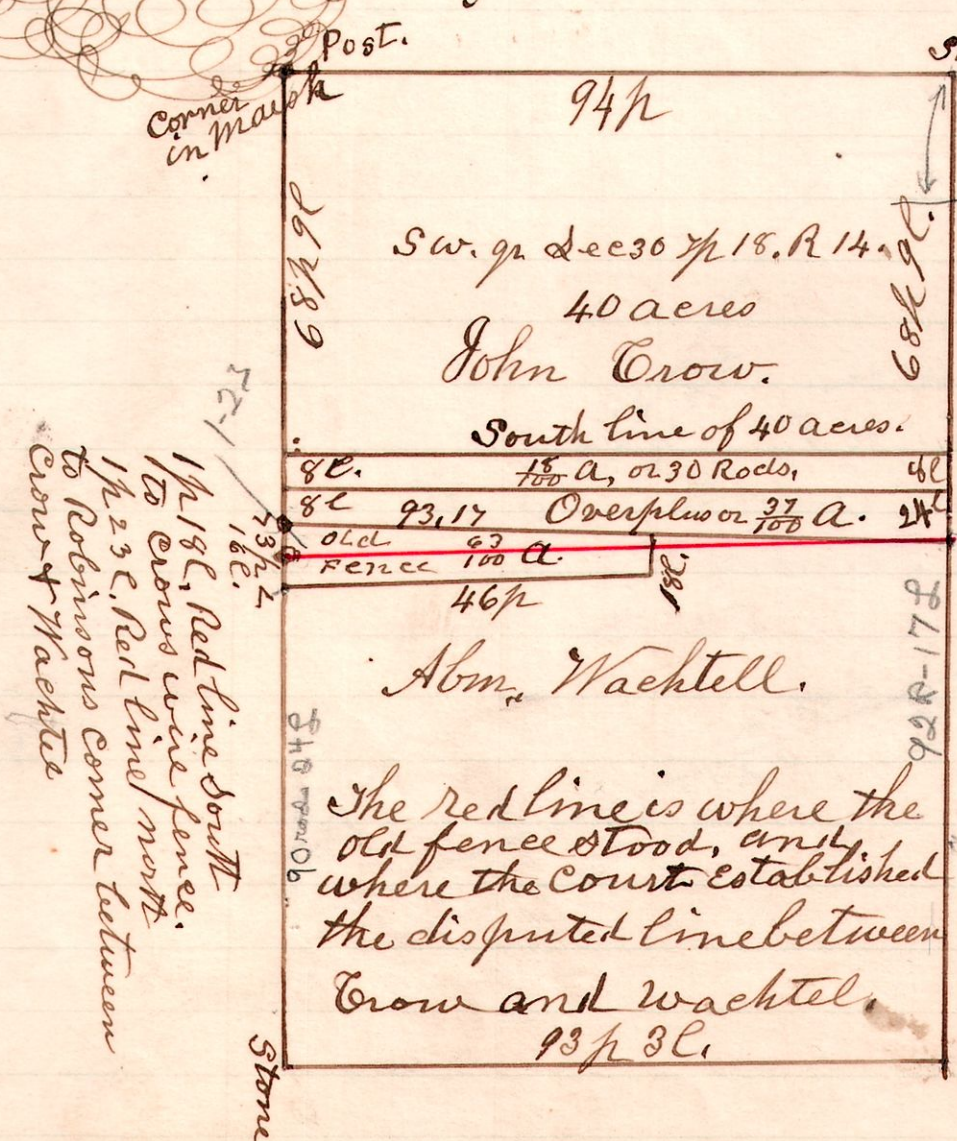
A survey made for Jacob, who being part of the south part of the east half of section 3, in Township 8, of Range 7; and part of the south part of the west half of the south east quarter of section 3, T8, R7. Being all the land lying south of Killbuck creek, and the Hardy Switch Rail Road, and the Cleveland, Akron and Columbus Rail Way, and the

H. H. Robinson
County Surveyor

14 18 30

Odell's Lattice

No 449



A survey made with reference to a law suit between Abm Waachtel and John Crow the property line between them being in dispute.

January 2, 1902
H. H. Robinson
County Surveyor

The red line is where the old fence stood, and where the court established the disputed line between Crow and waachtel.

See case # 2991 - Final Record 44 page 111
File Box 124
App Dec 20 page 362