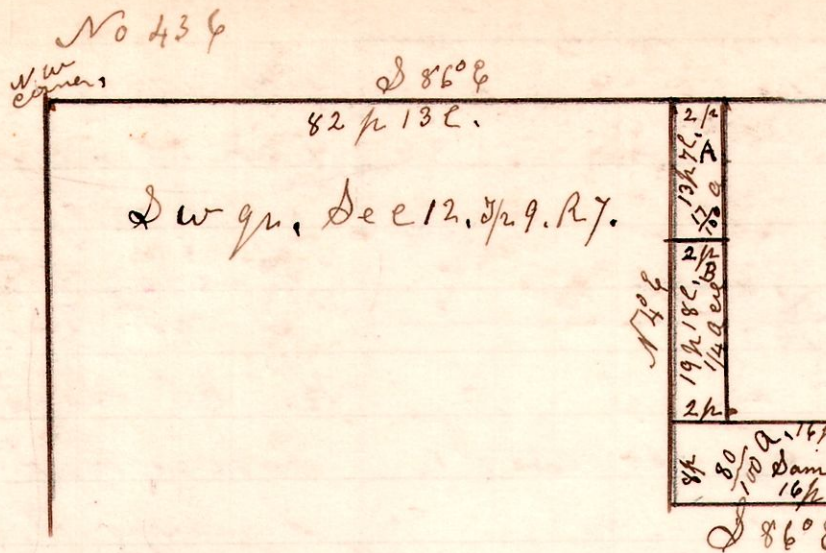


7 9 12 SW

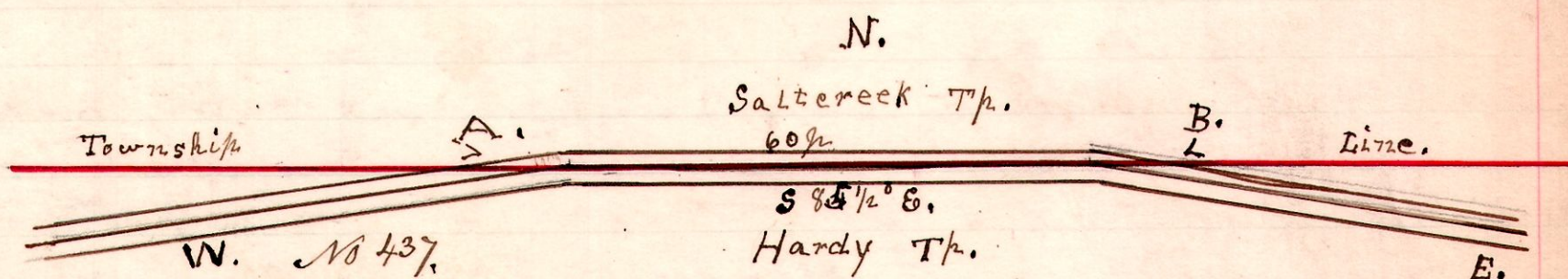


Sw qtr, Dec 12, Tp 9, R 7.

A survey made for Samuel Brown, and Nancy Jane Brown, to divide a lot owned by John Hamm, and sold to Samuel Brown, and he sold to his wife Nancy Jane Brown the part marked "B." containing $\frac{25}{100}$ of an acre.

Said land is in the incorporated village of Millerburg,
Sept 12th 1902,

H. H. Robinson
County Surveyor

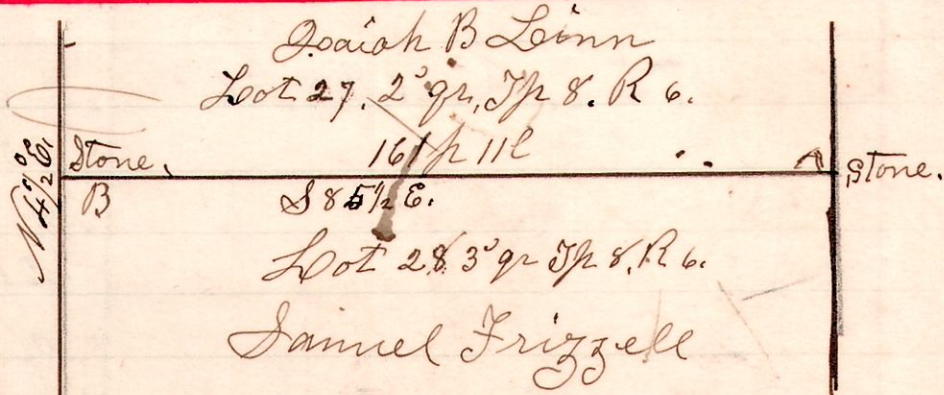


A Survey made for the Trustees of Hardy and Saltercreek Townships to locate the line A.B. which is the center of the road between the two Townships at the point A.B. being 60 perches in length. Said road is part of the State road leading from Millerburg, to Bethlehem in Tuscarawas County, by way of Mount Eaton in Wayne County. Said line A.B. is located on the north line of the north East quarter of section 4, in Township 9 of Range 6.
September 23rd 1902.

H. H. Robinson
County Surveyor

6 8 lot 27.

No 438.



A Survey made for Josiah B Linn and Samuel Frizzell to locate corners and lines between lot 27 third quarter, Township 8, Range 6; and lot 28, 3rd quarter, Township 8, in Range 6 located corners from the stump of a cisking tree, being the original government witness tree, and planted stone corner and ran west to B, where there was a stone corner made by Samuel Robinson in 1873.
Oct 2nd 1902.

H. H. Robinson
County Surveyor