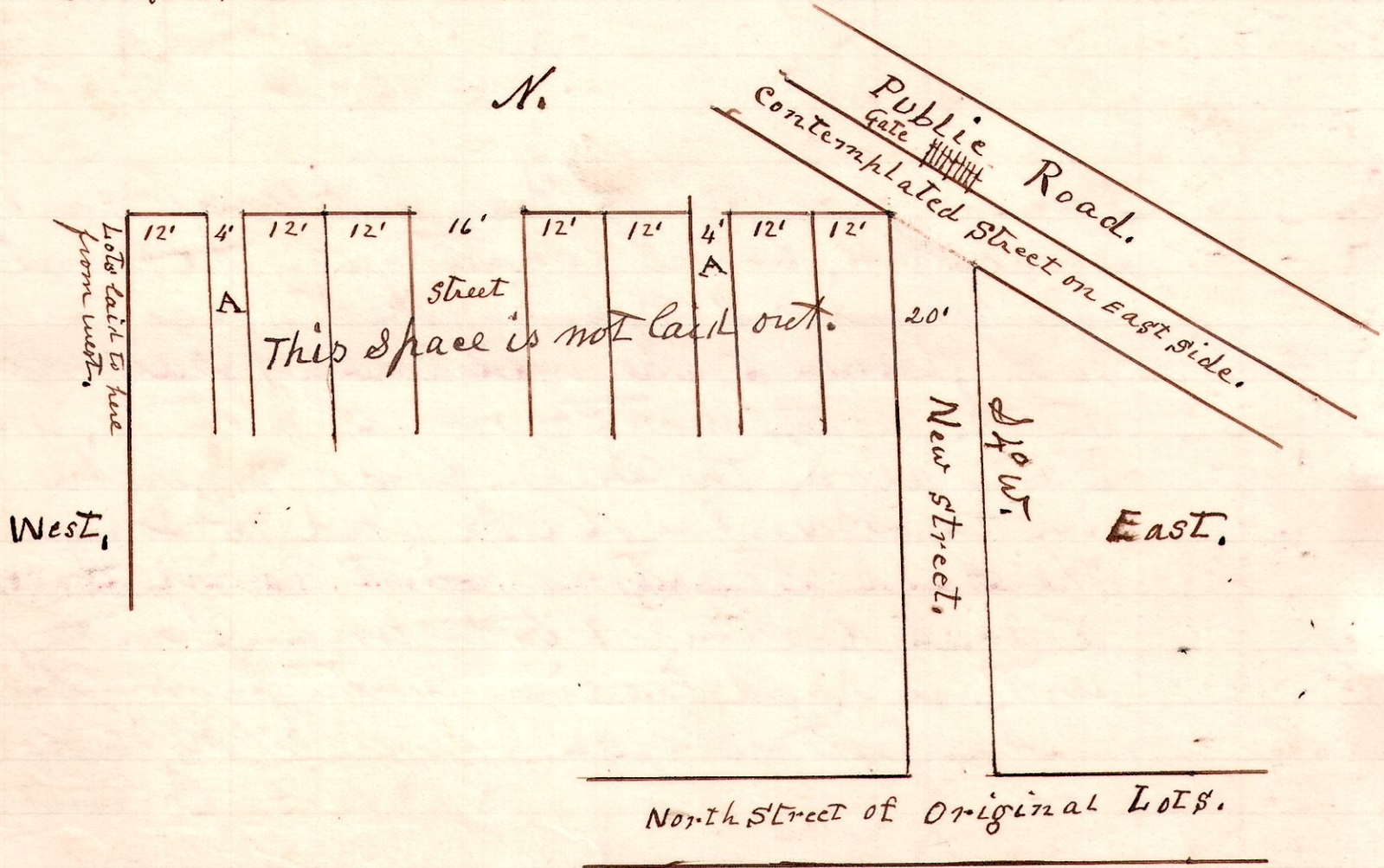


Millersburg
Cemetery.

7 9

A Survey made to locate a street in: Oak Hill Cemetery, leading from the gate on the east line of Cemetery grounds, South to intersect the north street of the original laid out cemetery lots and streets.

No 434.

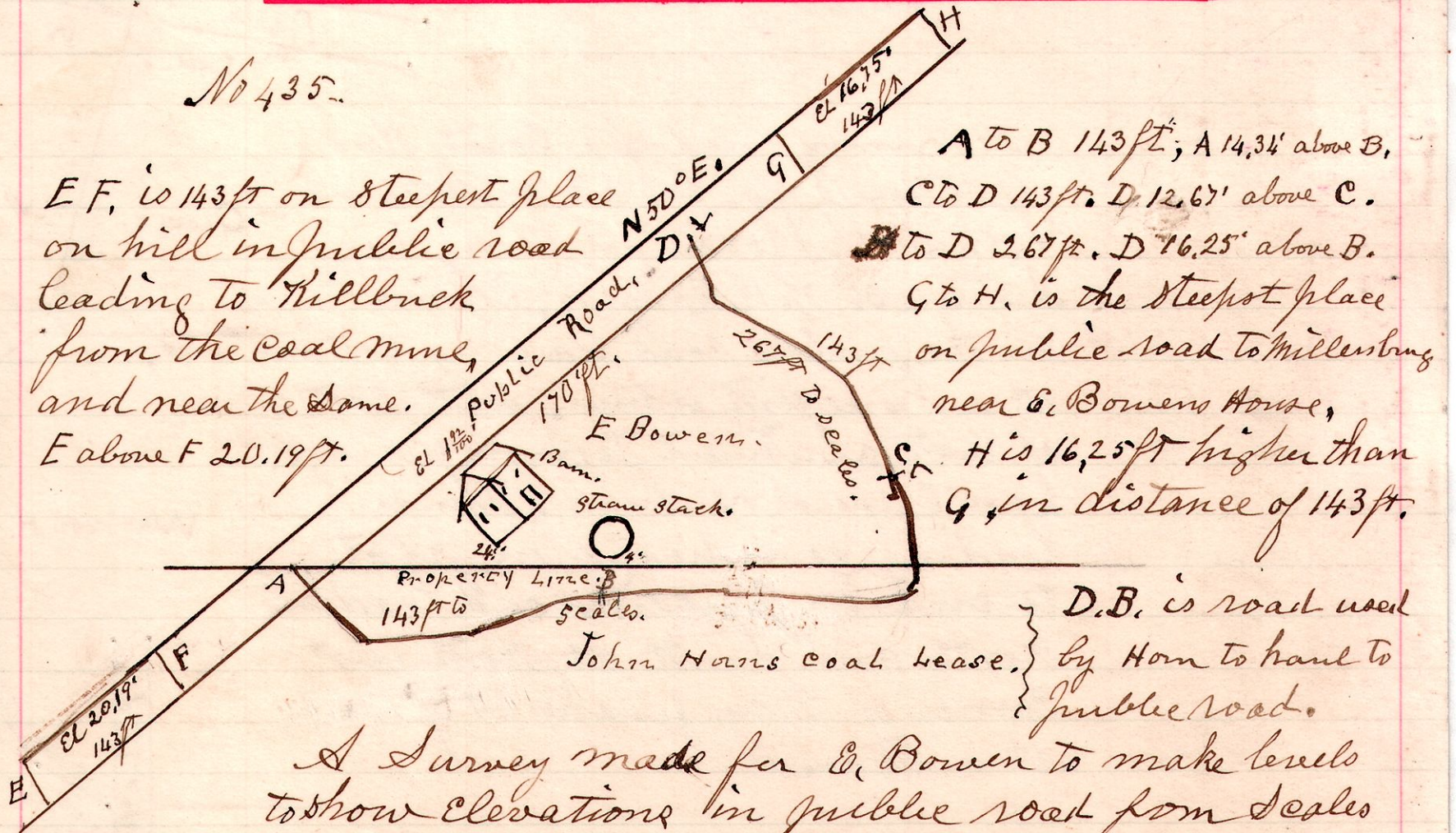


September 10th 1902
H. H. Robinson
County Surveyor.

7 9 ^{cut} 24

No 435.

E, F, is 143 ft on steepest place on hill in public road leading to Killbuck from the coal mine, and near the same. E above F 20.19 ft.



A to B 143 ft; A 14.34' above B.
C to D 143 ft. D 12.67' above C.
B to D 267 ft. D 16.25' above B.
G to H is the steepest place near E. Bowen's House. H is 16.25 ft higher than G, in distance of 143 ft.

D.B. is road used by Horn to haul to public road.

A Survey made for E. Bowen to make levels to show elevations in public road from scales of John Hans Coal bank, September 11th 1902

H. H. Robinson
County Surveyor.