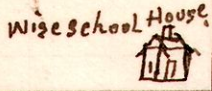


5 9 11+14.  
3<sup>rd</sup> q<sup>r</sup>

No 432



Public Road

Lot No 11, 3<sup>rd</sup> q<sup>r</sup> 9 R 5  
C. & J. Meyer.  
New Road. 30 ft wide.  
S 86° E. 77 p

Public Road

Lot 16, 3<sup>rd</sup> q<sup>r</sup> 9 R 5.  
Peter Wises heirs

Public Road

Public Road

Viewers.  
A. B. Albertson.  
W. P. Findley.  
Saml. Fair.  
Chamner.  
Guy R Palmer  
Engel & Hoover  
Marky.  
A. B. Albertson.  
Sunnyer  
H. H. Robinson

Survey of a county Road, petitioned for by David A Troyer & Al, being located on the line between lots number 11 & 16, in the 3<sup>rd</sup> quarter of Township 9. of Range 5. The west end of said road starts at the north west corner of lot 16, and extends East along the said line 77 perches and ends in the "Bunker Hill" and Rossum Valley road. The said starting point is in the center of a road leading north and south, and connects with a road leading west from said point.  
August 30<sup>th</sup> 1902, H. H. Robinson  
County Surveyor.

Settled recording of plat to here.

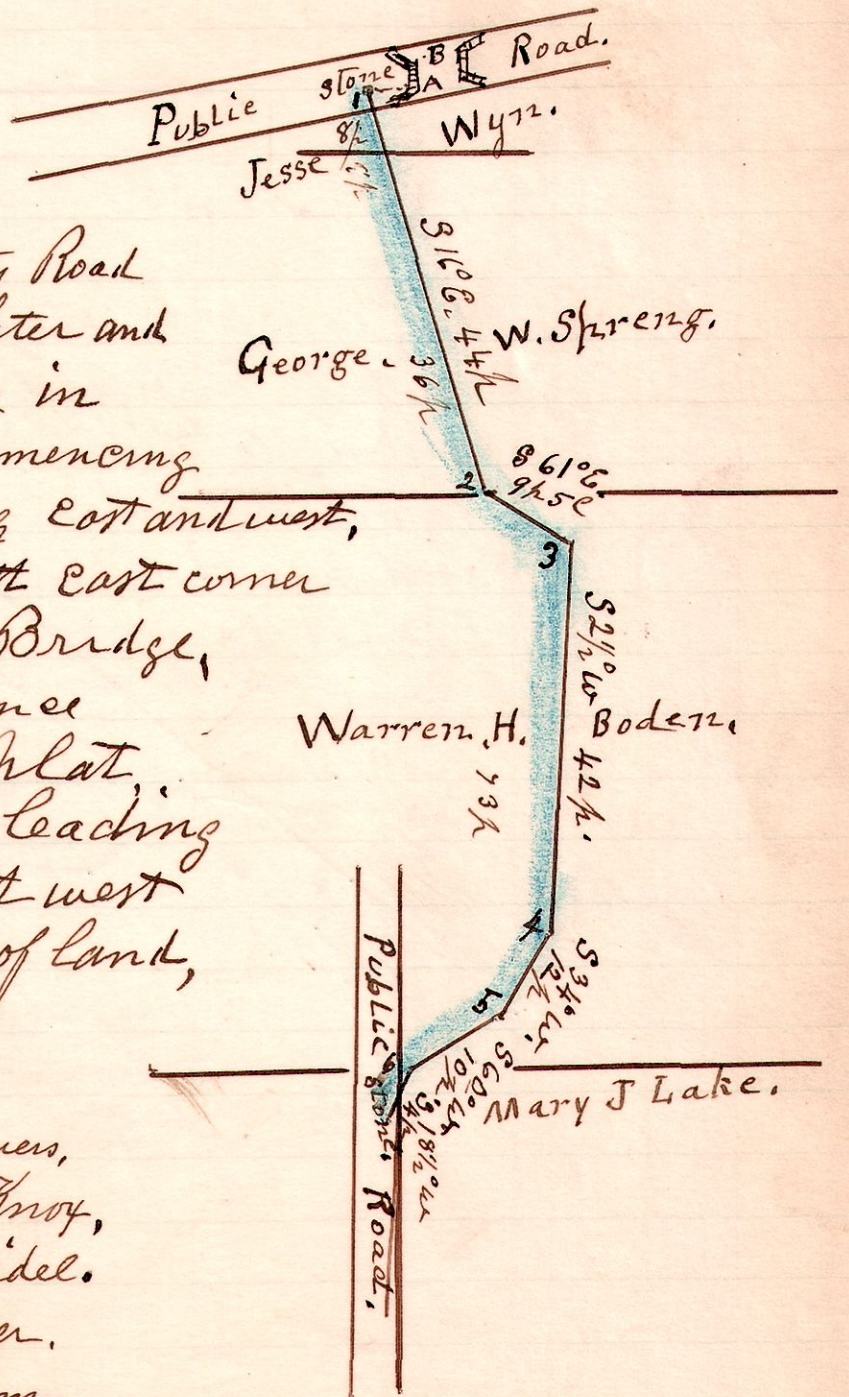
14 18 30

No 433

A Survey made of a County Road petitioned for by C. F. Wachter and others, the location being in Section 30, T<sup>h</sup> 18, Range 14, Commencing in the public road leading east and west, at a stone with witness, south east corner of west abutment to Iron Bridge, N 60° E. 1 perch + 22 links. Thence leading as indicated in plat, to end in public road leading north and south at north west corner of Mary J Lakes lot of land, at a stone.

Viewers.  
Charles C Knox,  
Reuben Sidel,  
Elias Crum.

Chain Carriers,  
Charles C Knox,  
Reuben Sidel.  
Marker.  
Elias Crum.



September 9<sup>th</sup> 1902.

H. H. Robinson  
County Surveyor.