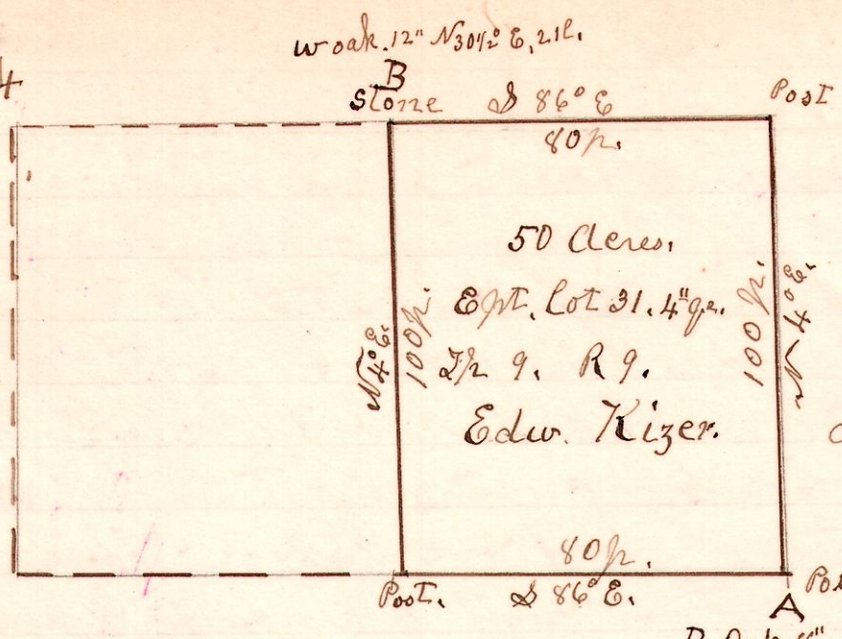


9 9 lot 31 4th qr

No 424



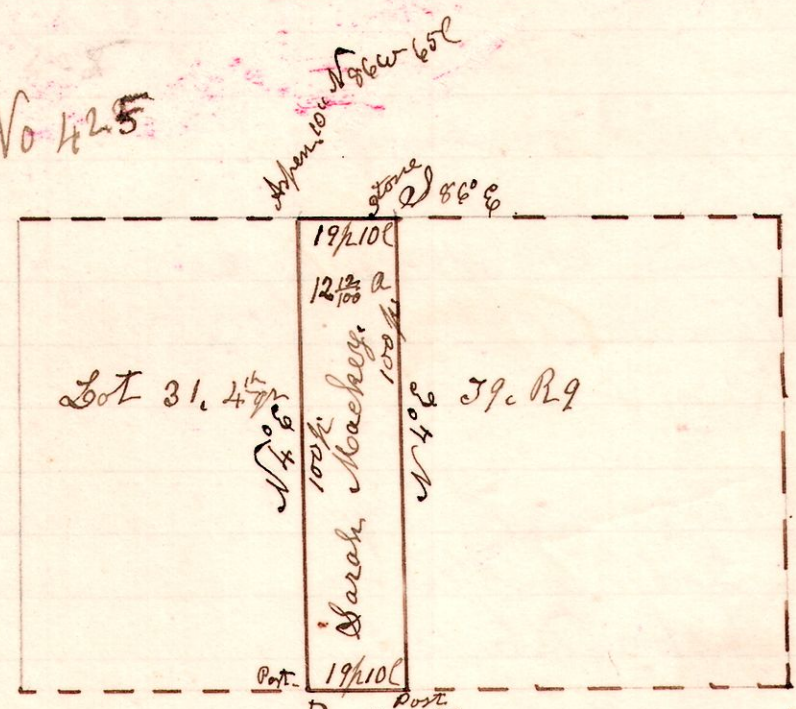
A Survey made for Edw Kizer, being the east part of Military lot 31, in the 4th quarter of Township 9. of Range 9.

H. H. Robinson
County Surveyor
August 14th 1902.

Chain carriers
Ed Kizer & Oliver Humphrey.

9 9 lot 31 4th qr

No 425



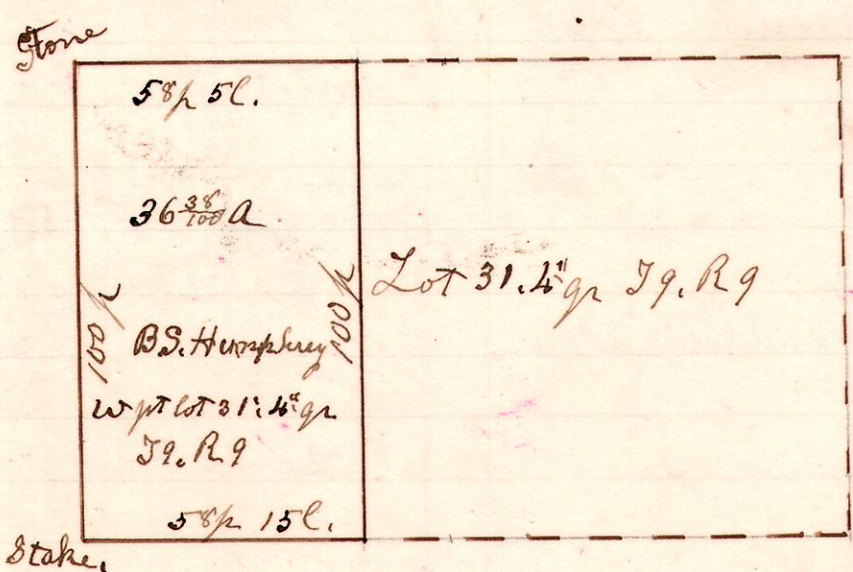
A Survey made for Sarah Mackey, being the middle part of Military lot No 31, in the 4th quarter, in Township 9. of Range 9.
August 14th 1902.

H. H. Robinson
County Surveyor

Chain carriers
H. H. Robinson & Ed. Kizer.

9 9 lot 31 4th qr

No 426



A Survey made for B. S. Humphrey, being the west part of Military lot number 31, in the 4th quarter, in Township 9. of Range 9.

August 14th 1902.
H. H. Robinson
County Surveyor.

Chain carriers.
H. H. Robinson
Edw Kizer.