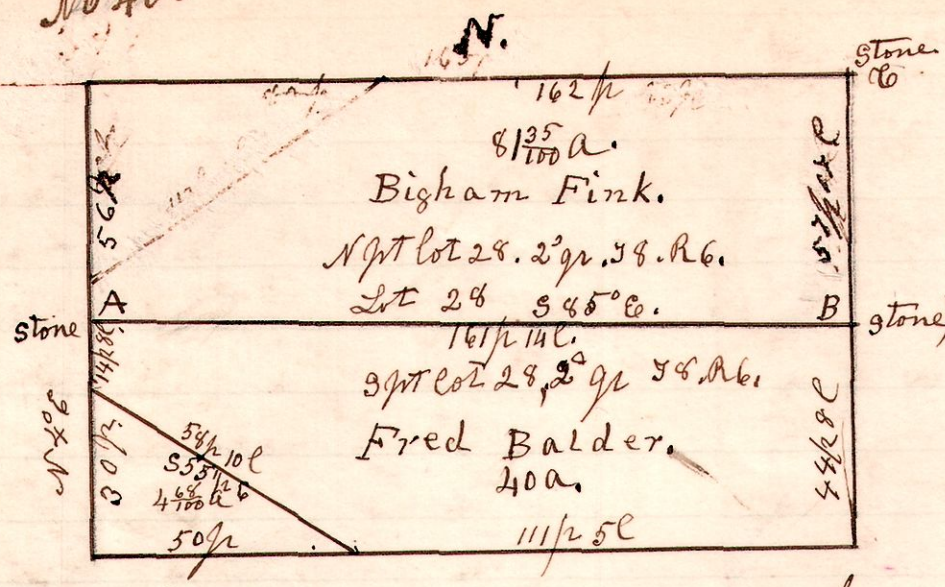


6 8 28 29

No 400

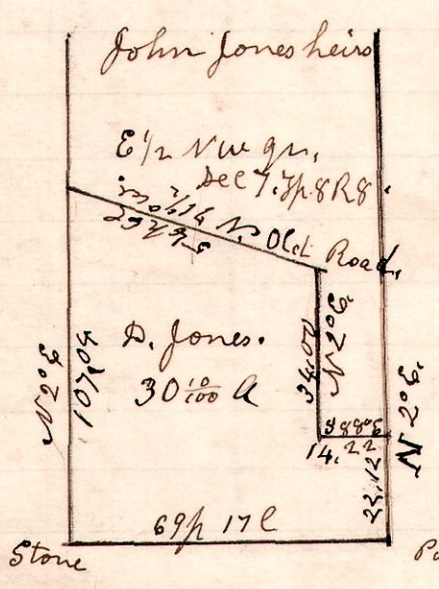


A survey made for Bigham Fink and Fred Balder, to locate the lines A, B, C, and the corners at same points. Stones planted at the corners. The original divide of said lot 28, was made by Samuel Robinson on September 17th 1866, and the above measures were made by him, as on his plat record of same, and deeds were made by John F. Love to John Morrison and Gabriel Fry May 12th 1902. H. H. Robinson County Surveyor

Chain carriers,
John Rusky, Flagmen August Barnhart,
Ben. Stewart, Jos Patterson.

8 8 7 5 1/2 NW

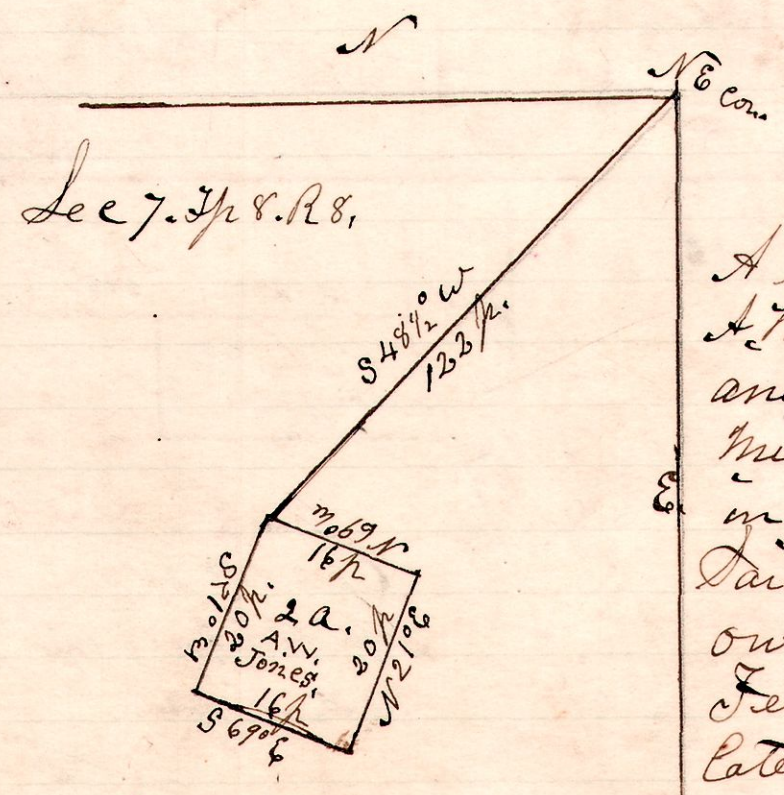
No 401



A survey made for Daniel Jones and the heirs of John Jones deceased, to divide the east half of the north west quarter of Section 7, in Township 8, of Range 8, according to quit claim deeds passed during the life time of John Jones. The north line (division) is the center of an old road bed, of an abandoned road, which at this time is clearly defined. May 13th 1902 H. H. Robinson County Surveyor

8 8 7

No 402



A survey made for A. W. Jones to locate lines and corners at old mill on Black Creek in Richland Township. Said mill was formerly owned by Hanson Ferrell, and more lately owned by Daniel and John Jones. May 13th 1902 H. H. Robinson County Surveyor