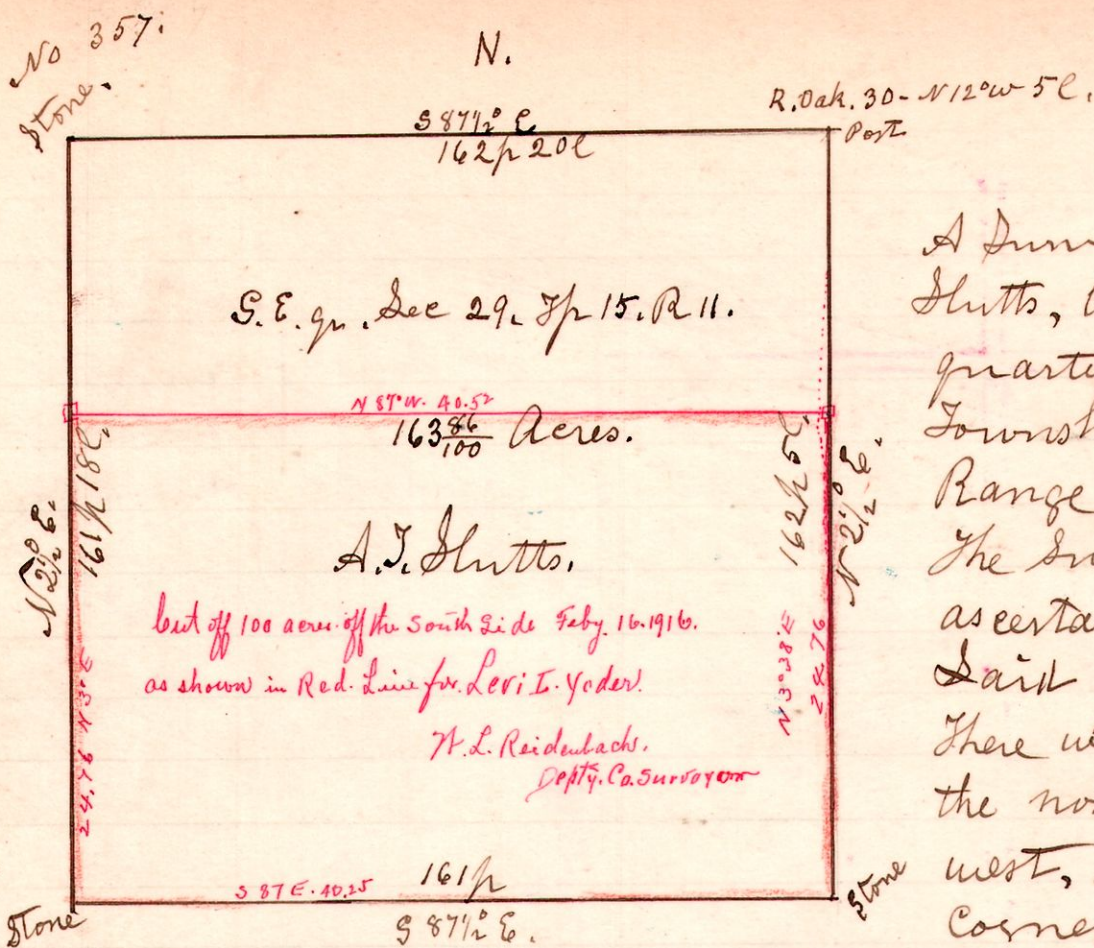


11 15 29 22.



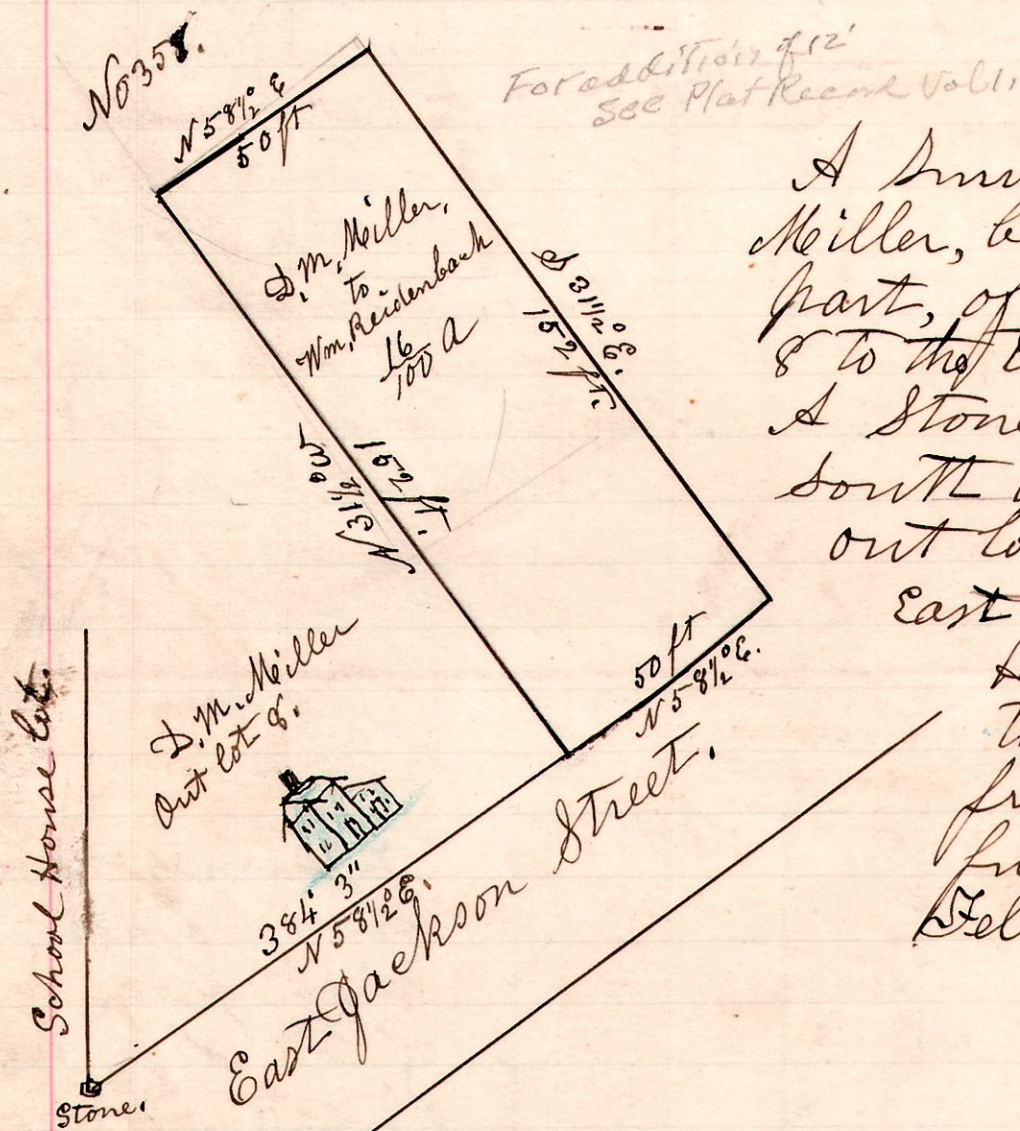
A Survey made for Alfred J Slatts, being the south east quarter of section 29, in Township number 15 of Range number 11. The survey was made to ascertain the contents of said quarter section. There was a stone corner at the north west, the south west, and the south east corners. I established a corner at the north east

corner, and took witness, Red oak, 30 inches in diameter, North 12° west, 5 links.

Chamearnos. Swam.
Wm. Robinet,
Chs. Inks.

December 30th 1901.
H. H. Robinson
County Surveyor

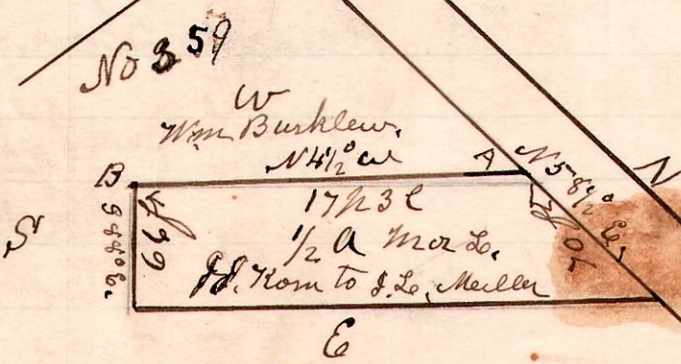
Millersburg.



A Survey made for Daniel M Miller, being part of the south part of Out lot number 8 to the town of Millersburg. A stone planted at the south west corner of said out lot, (also being the south east corner of the School House lot) from which to take measurements from for this survey, and future surveys.

February 18th 1902.
H. H. Robinson
County Surveyor

7 9 12



A plat of land sold by John J Korn to John J Miller, being part of the north part of out lot No 4, to the town of Millersburg, commencing at a cherry tree the north east corner of land heretofore sold by said Korn to Wm Burklew and wife.

A. cherry tree North East corner of Wm Burklew land.
B. Corner of Korn & Burklew land.
See next page, No 358 for change of lot.

February 21st 1902. H. H. Robinson
County Surveyor