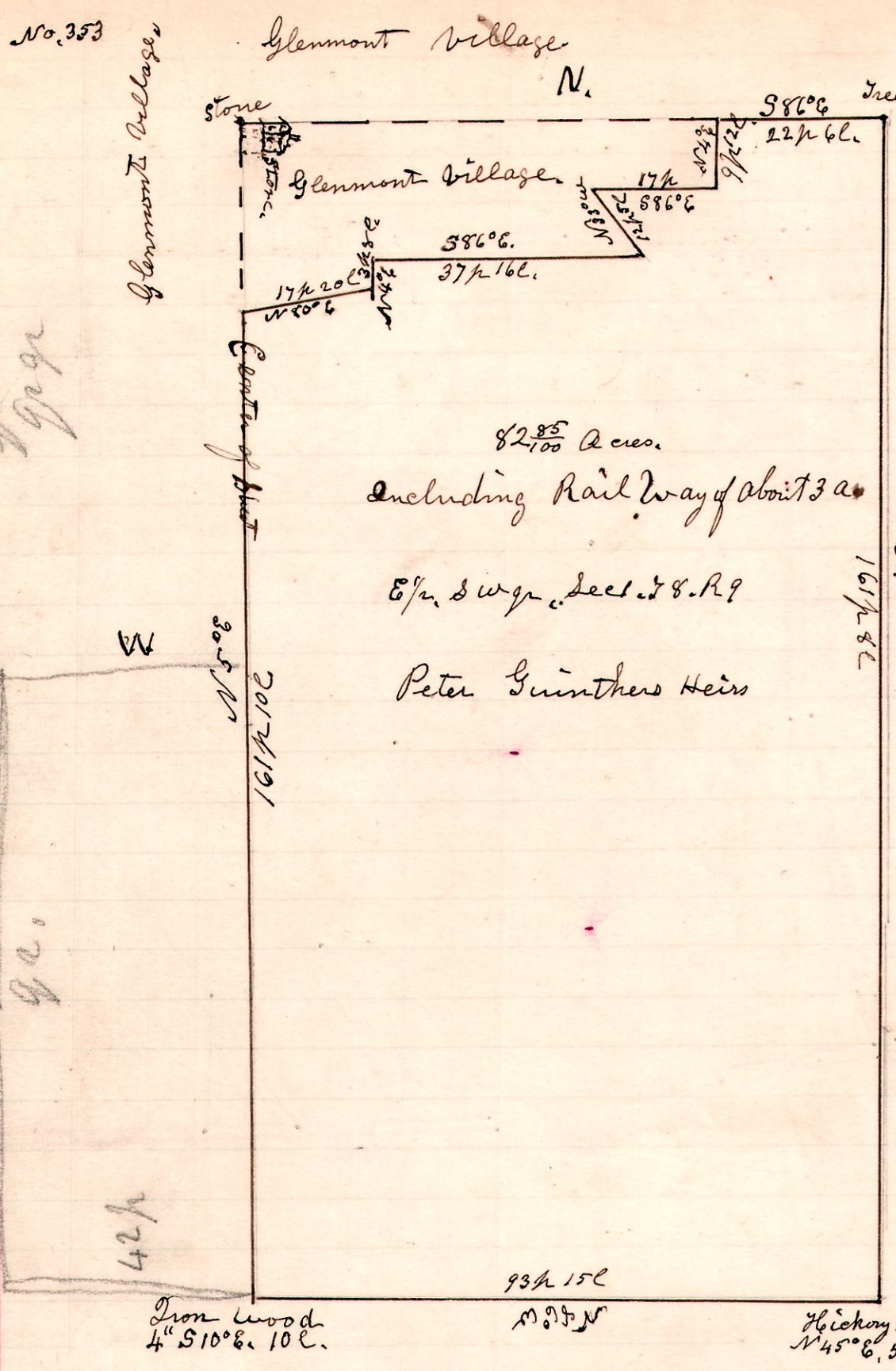


No. 353  
9 8 1 E.L.S.W.2



Tree + stump of original witness trees standing.

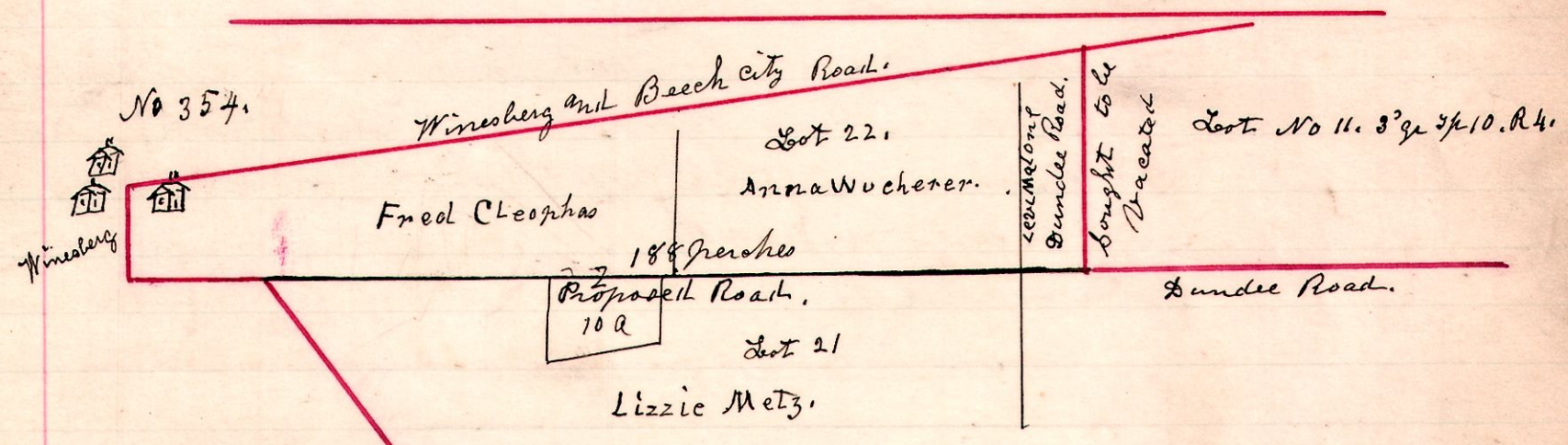
A Survey made for E. J. Dyer, Real Estate Agent, being part of the Estate of Peter Gunther deceased,

Being the East half of the south west 1/4 quarter of Section 1 in Township 8, of Range, Excepting so much as contained in the village of Glenmont, first known as Napoleon

December 15<sup>th</sup> 1901  
H. H. Robinson  
County Surveyor

Chain carriers,  
Wm McLaughlin  
Charles Rizon,  
Marker  
E. J. Dyer.

No 354.  
4 10 3 1/2



A County Road petitioned for by Wm Leyman, Leon Malone and others, near Winesberg, and was Surveyed Dec 11<sup>th</sup> 1901.

Witness,  
Benj Weaver  
Moses K Miller  
Wm Deberry,  
Chain carriers.  
Moses K Miller  
Wm Deberry  
Marker  
Benj Weaver.  
H. H. Robinson  
County Surveyor