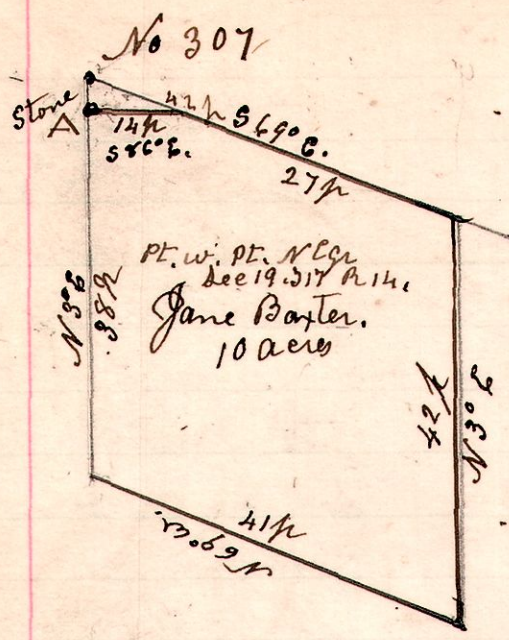
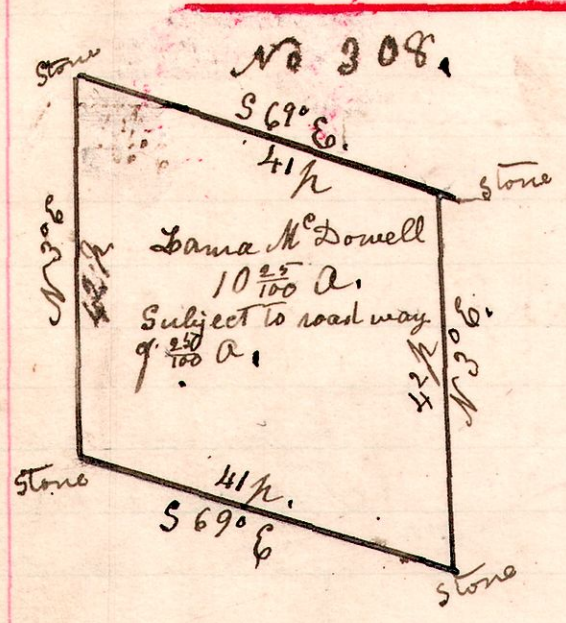


14 17 19 N 6.



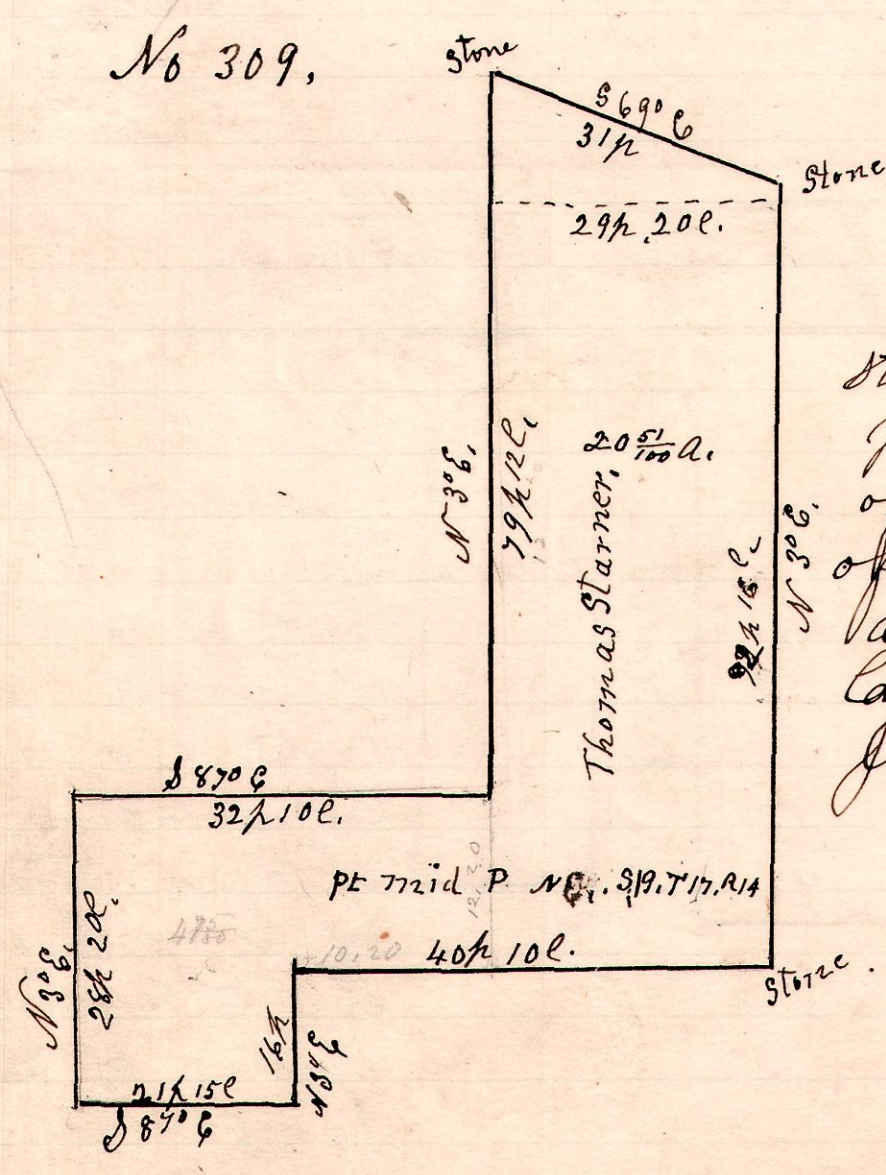
A survey made for Jane Baxter, being part of the west part, of the north east quarter of section 19, in Township 17, of Range 14, being a sub-division of the Eliza Starnes farm, as directed in her will A is a mark on a rock on north side of public road, on west line of said quarter.  
 Stones planted at all corners.  
 July 2<sup>d</sup> 1901.  
 H. H. Robinson  
 County Surveyor.

14 17 19 N 6



A survey made for Lanna McDowell being part of the north part of the north East quarter of section 19, Township 17 of Range 14. Commencing at a stone in the public road 42 perches S 69° East of the west line of said quarter section. This is a sub-division of the Eliza Starnes land as directed by will.  
 July 2<sup>d</sup> 1901  
 H. H. Robinson  
 County Surveyor.

14 17 19 N 6



A survey made for Thomas Starnes, being part of the middle part of the north East quarter of section 19, in Township 17 of Range 14. Being a sub-division of the Eliza Starnes land.  
 July 3<sup>d</sup> 1901  
 H. H. Robinson  
 County Surveyor.