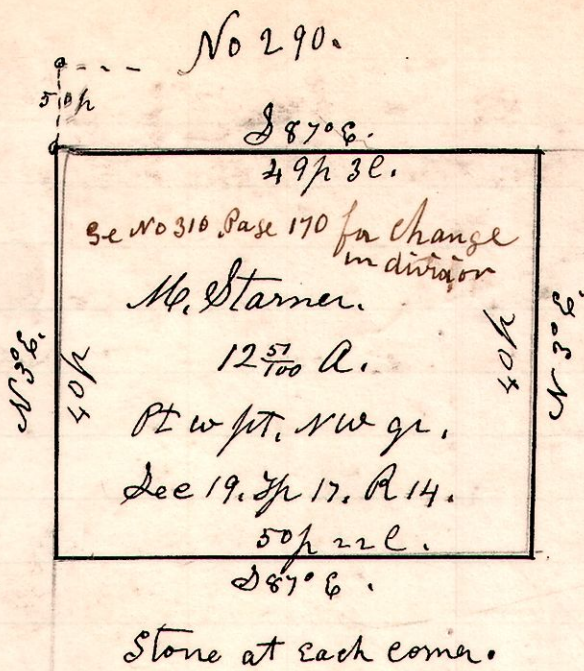
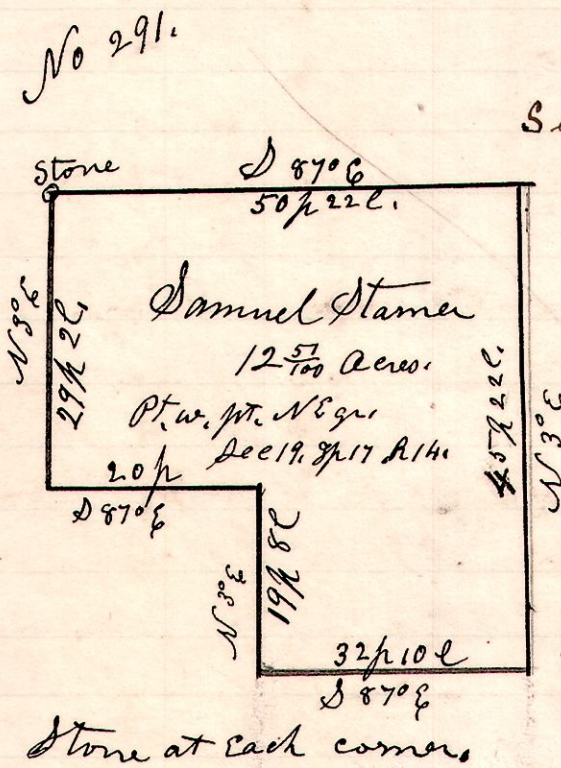


14 17 19 N.E.



A Survey made for the Eliza Stamer heirs being part of the west part, of the north east quarter of Section 19, in Township 17. of Range 14. Commencing at a Stone on the west line of said quarter, 50 perches south of the north west corner <sup>Eliza Stamer land</sup> thereof. Thence as indicated on plat.  
May 1<sup>st</sup> 1901. H. H. Robinson  
County Surveyor

14 17 19 N.E.



See No 311 for change in division. Page 170.

A Survey made for Eliza Stamer heirs, being part of the west part of the north east quarter of Section 19, in Township 17 of Range 14. Commencing at a stone on the west line of said quarter 90 perches south of the north west corner of <sup>Eliza Stamer land</sup> said quarter, thence as indicated on plat.  
May 1<sup>st</sup> 1901. H. H. Robinson  
County Surveyor.