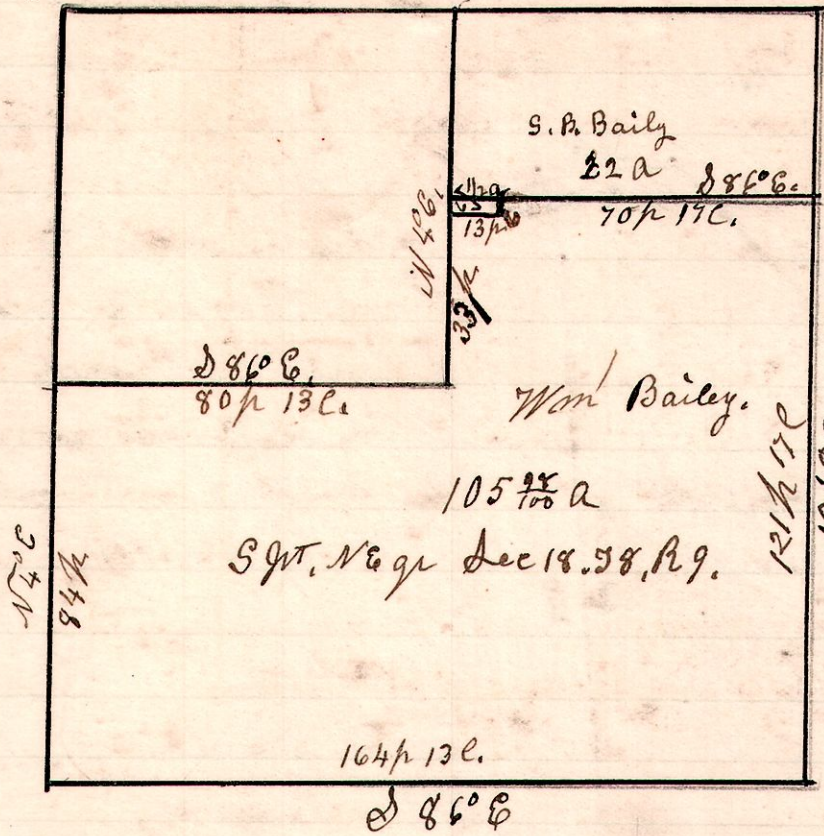


9 8 18 N.E.

No 277.



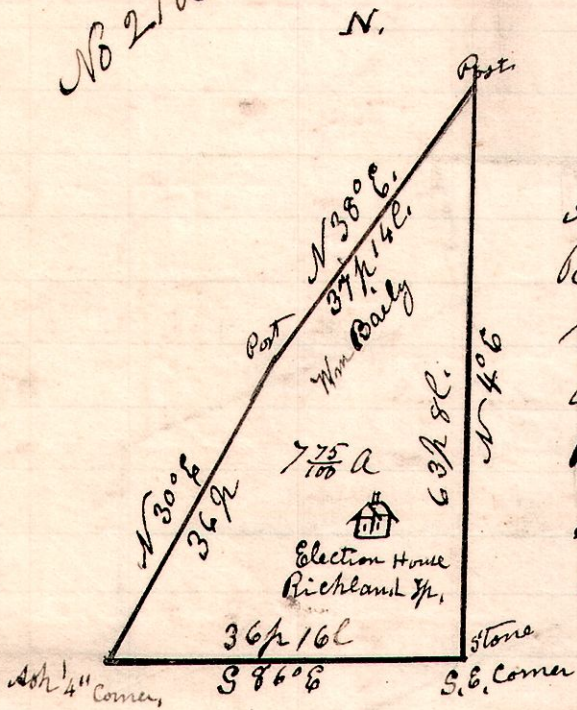
A survey made for Wm Bailey  
Being in the north east  
quarter of section 18, in  
Township 8, of Range 9,  
April 4<sup>th</sup> 1901.

H. H. Robinson  
County Surveyor

Chain Carriers,  
Wm Greenizer  
Fred Greenizer.

9 8 19 N.W.

No 278.

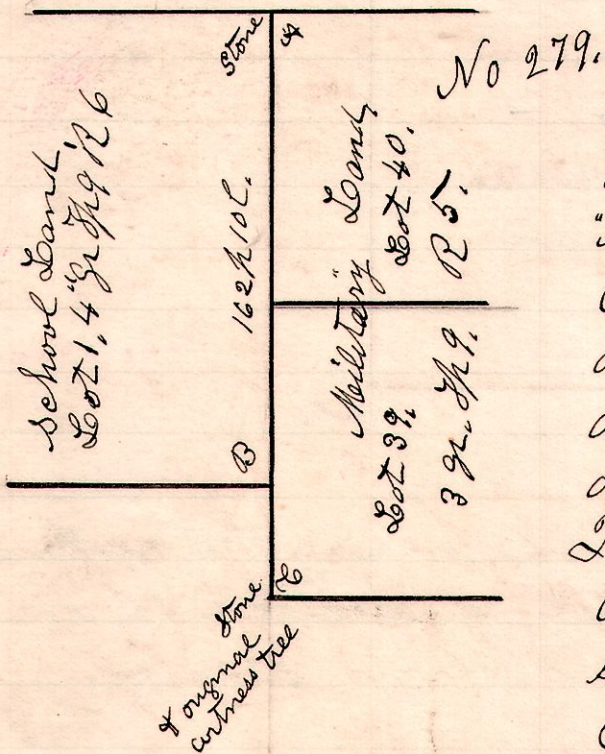


A survey made for William Bailey,  
Being the south east part of the  
north west quarter of section 19,  
in Township 8, of Range 9.  
Being the location of the election  
School House, a church, and  
Cemetery, in Richland Township,  
and they being surrounded by  
grounds owned by Wm Bailey.

April 4<sup>th</sup> 1901 H. H. Robinson  
County Surveyor

Chain Carriers.  
Wm Greenizer  
Fred Greenizer.

6/5 9 lots 1, 39, 40.



A survey made for Meyers Bros of Berlin  
to establish corner at B and locate the line  
"A. B.". At "A" there is an undisputed  
corner stone. At "B" there was a stone  
on east of Public Road, which was disputed  
as to its being correct. These corners are  
all on line between Ranges 4 & 5.

I found a marked corner stone at C  
with one of the original witness trees  
standing, which was an undisputed  
corner on Range line. I found the  
disputed corner stone at "B" to be  
10 links east of the true corner.

I established a new corner at "B" and a line from  
"A" to "B". H. H. Robinson  
County Surveyor

Chain Carriers  
Mort Huffman,  
Herbert Heron.

April 6<sup>th</sup> 1901.