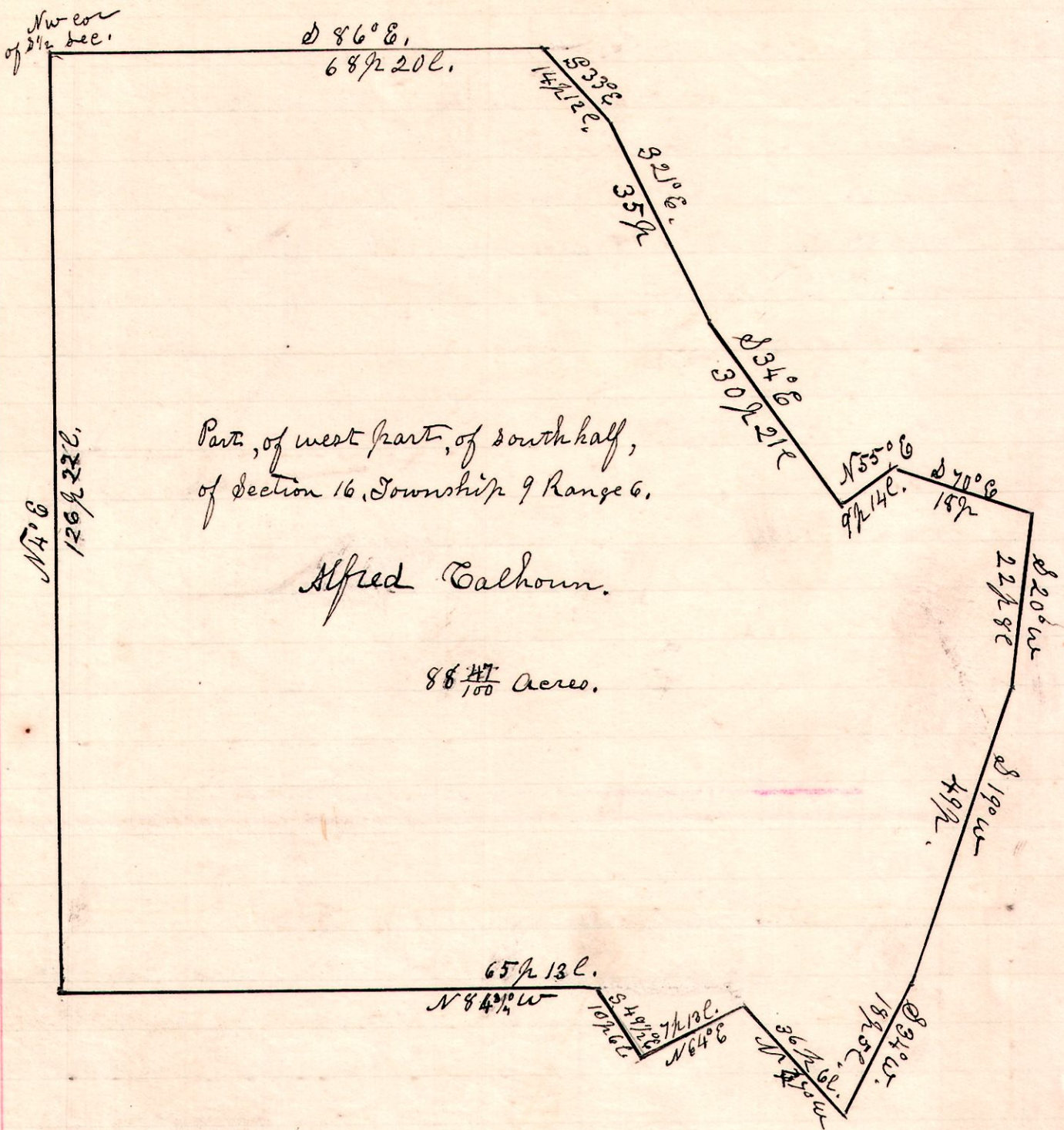


No 353

6 9 16 8 1/2



Part, of west part, of south half,
of section 16, Township 9 Range 6.

Alfred Calhoun.

88 ⁴⁷/₁₀₀ acres.

Surveyed the above, being for Alfred Calhoun, being
the north west part of the south half of section 16, in
Township 9 of Range 6,

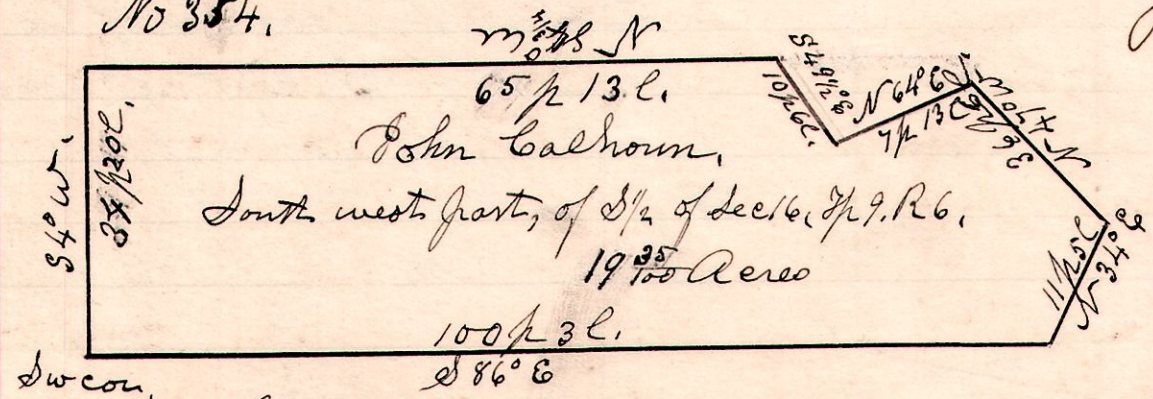
December 6th 1900.
Chain Carriers
Samuel Devore,
Oliver Finley.

H. H. Robinson
County Surveyor.

Chain carriers,
Cal Finley,
John Wolgamot.

No 354.

6 9 16 8 1/2



John Calhoun,
South west part, of 1/4 of sec 16, Tp 9, R 6.
19 ³⁵/₁₀₀ Acres

Surveyed the above for John Calhoun being
the south west part, of the south half of section
16, in Township 9, of Range 6.
December 6th 1900

Chain carriers, Samuel Devore
Oliver Finley.

H. H. Robinson
County Surveyor.