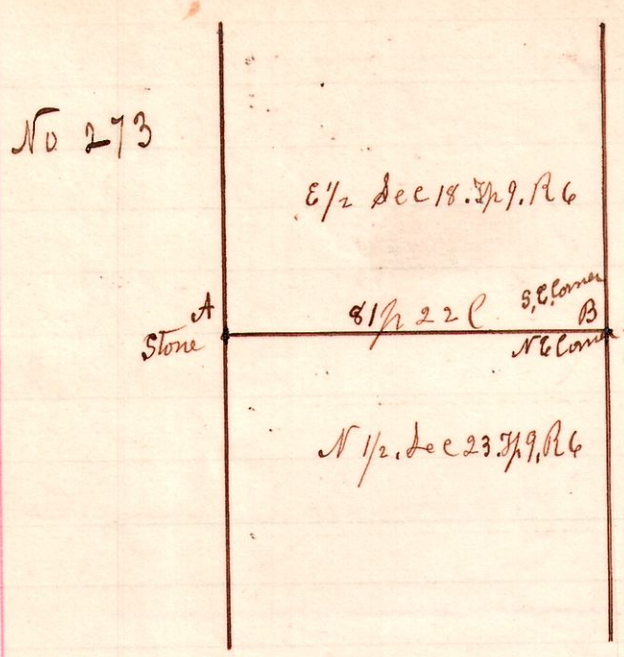
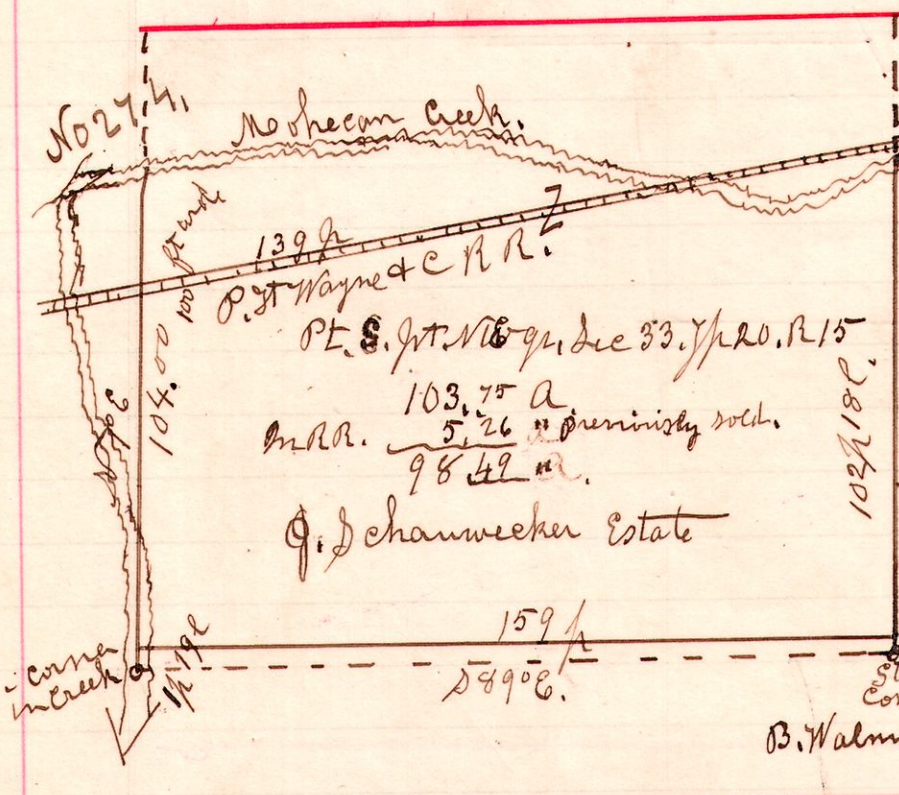


R 3 S 2
6 9 18



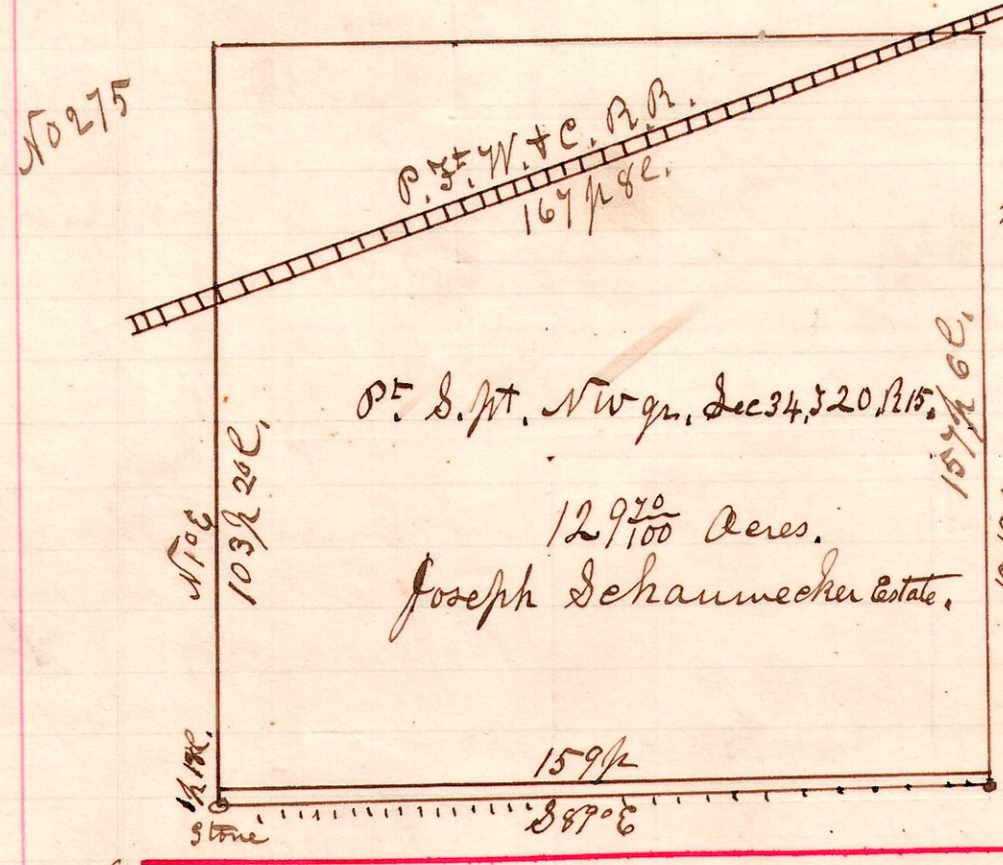
A Survey made to establish the line A. B. between lands of D. D. Inger and Chs Shie, the same being a disputed line. Found old corner stone at A, and an established corner at B. from a witness. Taken by Samuel Robinson April 23rd 1853, Stone planted. Survey made for D. D. Inger & Chs Shie. Chain carriers, Ruben Carpenter, J. J. Comast. May 20th 1899 H. H. Robinson Dept Co Surveyor

15 20 33 NE



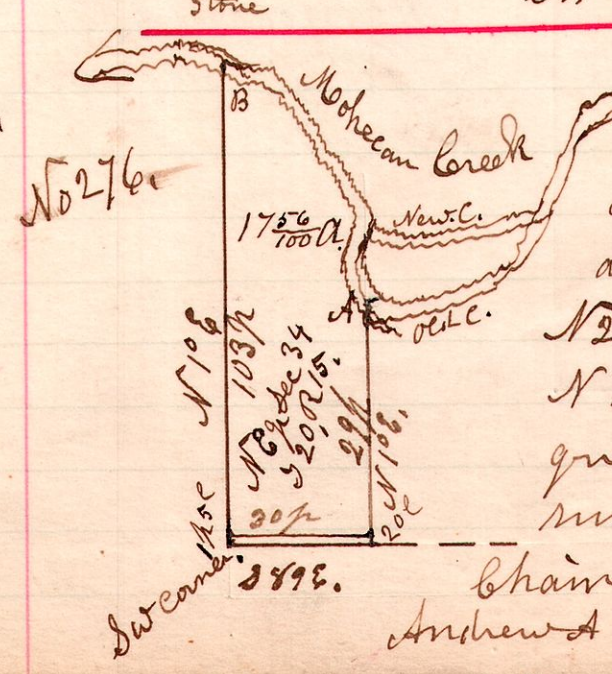
A Survey made for John Ecki and heirs of Joseph Schanwecker, to ascertain contents. Creek line on north center. May 22nd 23rd 1899. H. H. Robinson Dept Co Surveyor. Chain carriers, Andrew A. Easley, John Levengood.

15 20 34 NW



A Survey made for John Ecki and heirs of Joseph Schanwecker to ascertain contents. R.R. line on north. South. May 23rd 1899. H. H. Robinson Dept Co Surveyor. Chain carriers, Andrew A. Easley, John Levengood.

15 20 34 NE



A Survey made for John Ecki and heirs of Joseph Schanwecker to ascertain lines & contents. The line is center of channel of creek from A. to B. as follows. N 12° W. 23 perches; N 15° E. 16 perches, N 2° E. 22 perches, N 48° W 13 perches & 6 links, N 73 1/2° W 19 perches to South line of the north east quarter of Section 34. Twp 20 Range 15. The line runs part in old channel. May 23rd 1899. Chain carriers, Andrew A. Easley, John Levengood. H. H. Robinson Dept Co Surveyor.