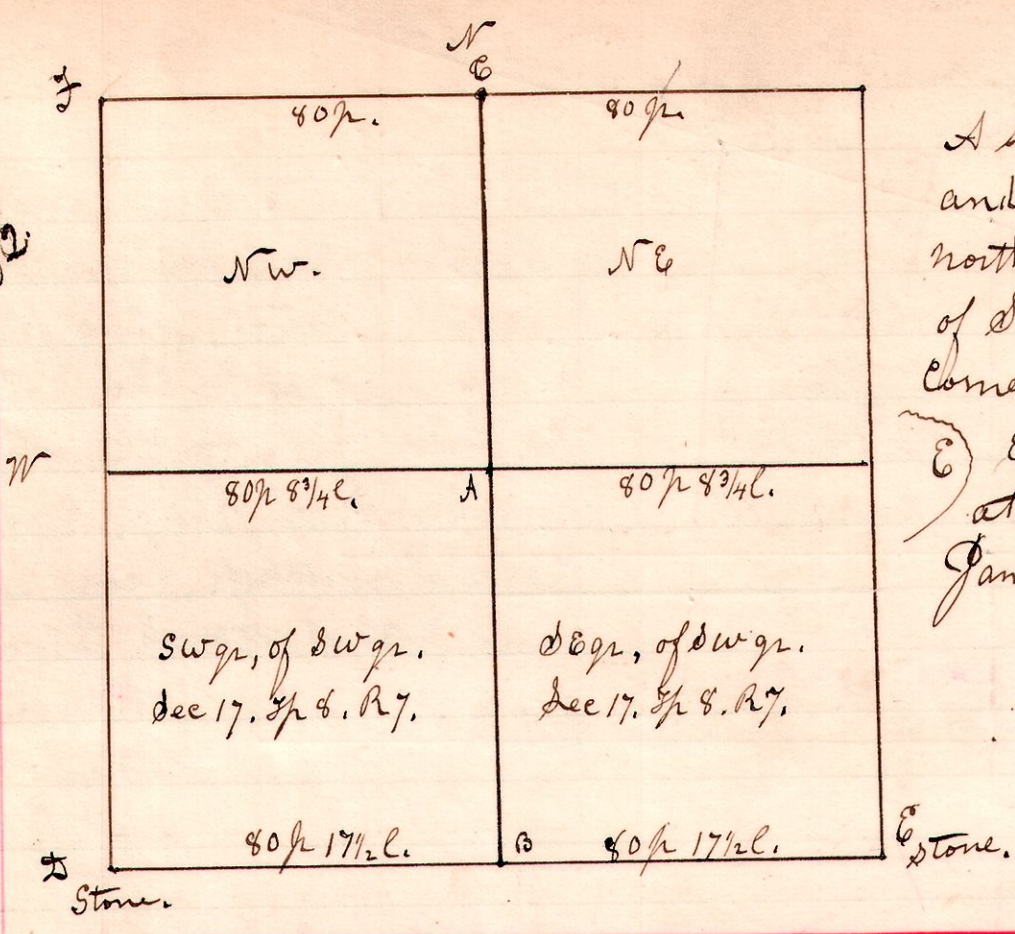


R J Dec
7 8 17

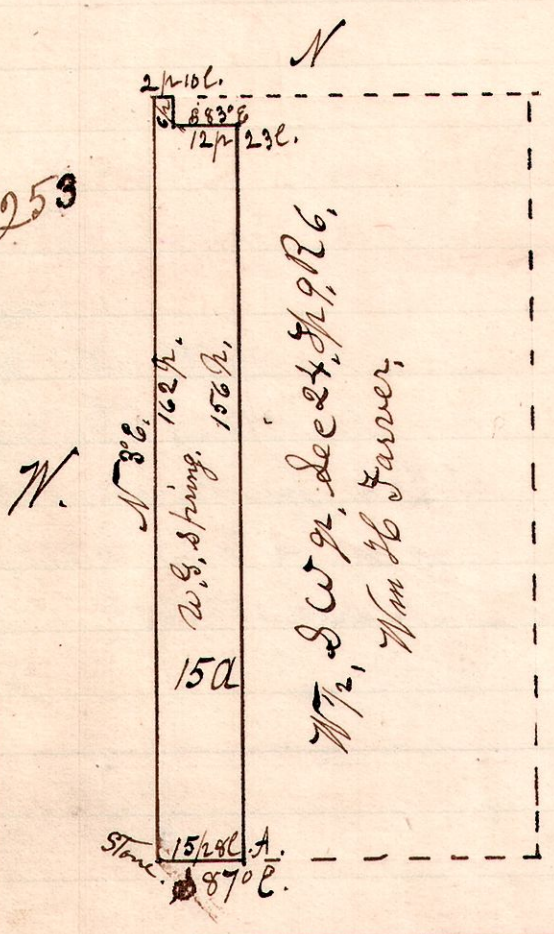
No 252



A survey made to establish corners, and line A.B. Measured the north and south line of said of said quarter, and established corners at A, B, C. and line A.B, Equi distant. Found Stone corner at S.E. C. For Geo. Carpenter, January 20th 1899. H. H. Robinson Dept^o Surveyor.

6 9 24

No 253



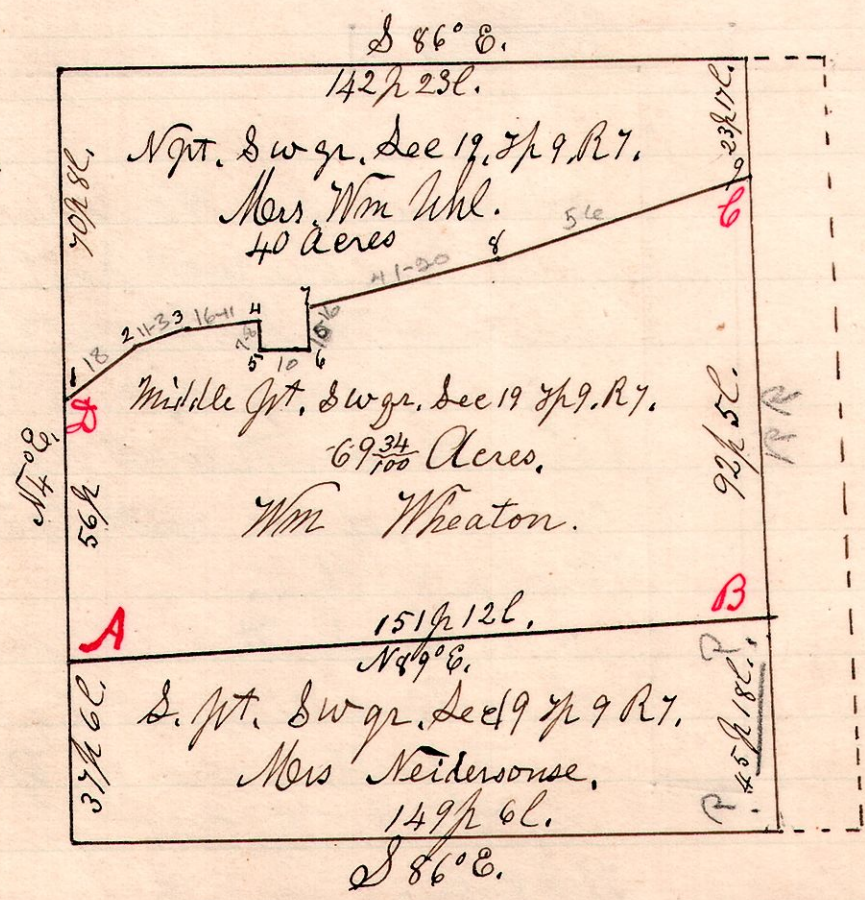
Surveyed this 15 acre tract, being the west part, of the west half, of the south west quarter, of section 24. Tp 9. R 6. January 25th 1899.

H. H. Robinson
Dept^o Surveyor.

A. B. Oak. 16. N 45 1/2 W 8 1/2 l.
Chain carriers,
Elmer Findley,
Cyrus Farmer.

7 9 19 SW

No 254



1. N 54 1/2 E. 18 p.
2. N 69 1/2 E. 11 p 3 l.
3. N 86 1/2 E. 16 p 11 l.
4. S 3 1/2 W 7 p 8 l.
5. S 86 1/2 E. 10 p.
6. N 3 1/2 E. 10 p 16 l.
7. N 77 1/2 E. 41 p 20 l.
8. N 77 1/2 E. 56 p.

Chain carriers,
John Schildts.
Ellsworth Uhl.

Surveyed the lines A-B - B-C & A-D, the balance having been formerly Surveyed by J. C. Calhoun, and recorded in Vol 2 Page 420 Survey Record.

Survey made for Wm Wheaton and others.
Feb 2nd 1899.
Account rendered to here Nov 5th 1899.
H. H. Robinson
Dept^o Surveyor.