

7 8 24

No 231.

Sec 24, T8, R7.  
Dw gr.

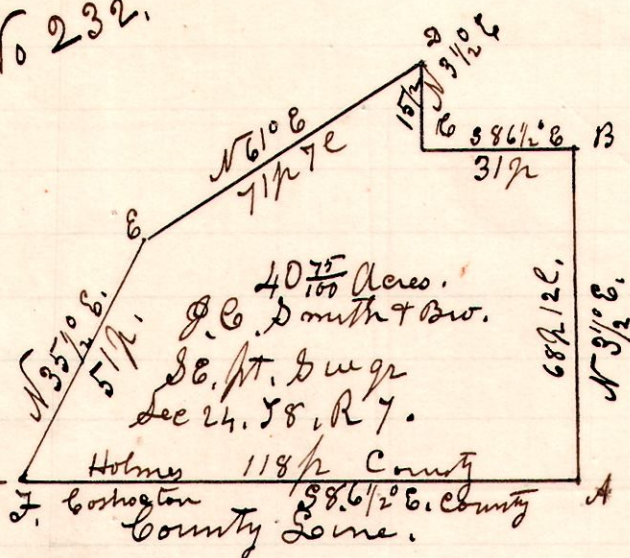
County of Seine  
A. legal Survey by 20 days notice  
by N. Seeling on pt. Smith & Bro.  
Chain carriers J.C. Smith & L.D. Seeling,

A Survey made for Nat. Seeling, and  
Smith Bros to establish quarter section  
corner at "A." on line between Holmes  
and Coshocton Counties, and run line  
north to establish the same.

Look new witness trees at "A." as follows  
Black Walnut 4" N 83° E - 2 1/2 ft. H.C.  
Ash 4" - S 67° E - 16 ft. H.C.  
October 25<sup>th</sup> 1898. H.C. Robinson  
Dept. C Surveyor.

7 8 24 Sw

No 232.

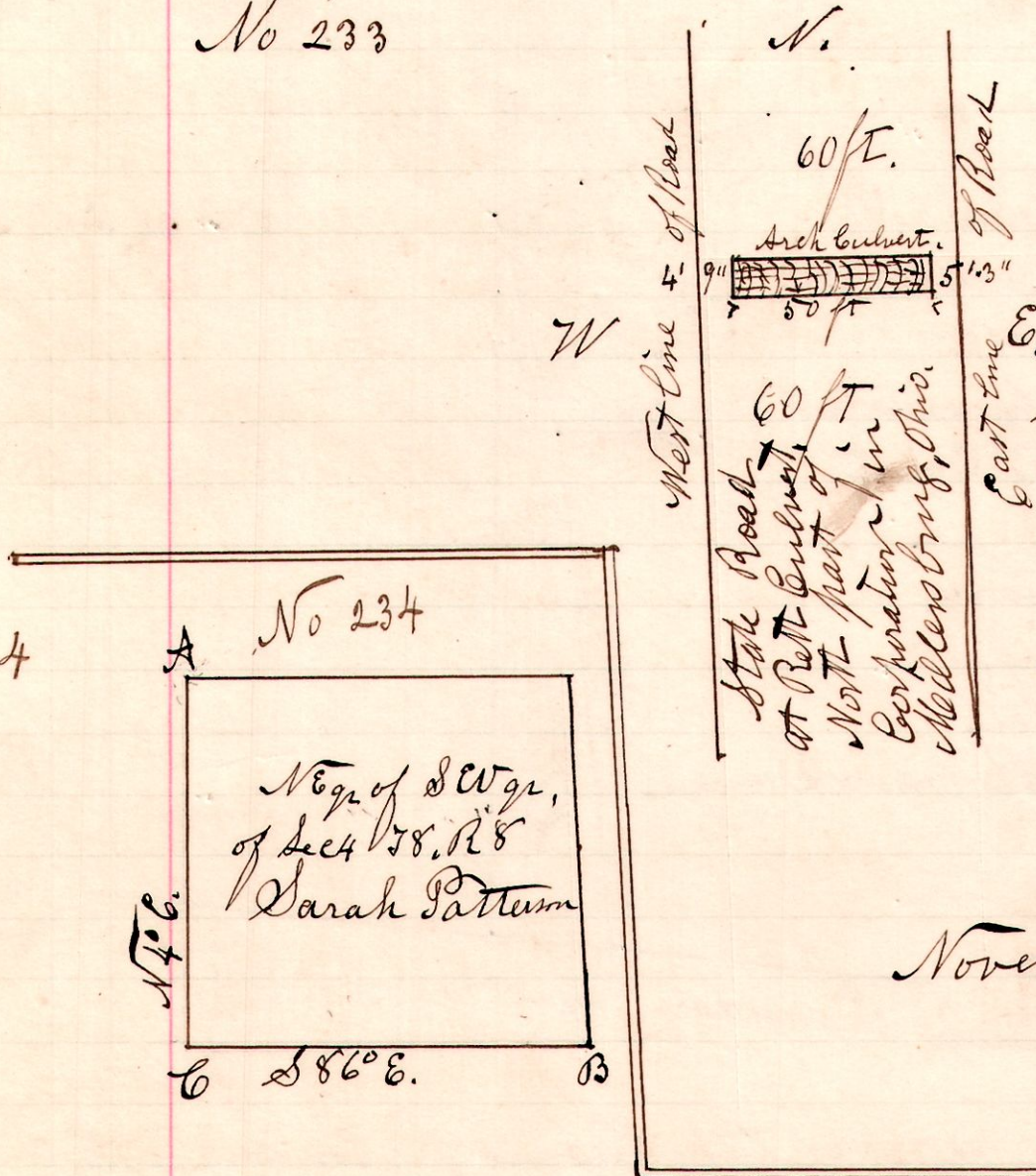


A Survey made for Smith and Broda to  
establish corners and lines between their land.  
Chain carriers, J.C. Smith & L.D. Seeling.

Witness. A. Stone & B. Walnut 4" - N 83° E - 2 ft. H.C.  
" Ash 4" - S 67° E - 16 ft.  
B. Maple 18" the corner & cut in rock East 3 ft.  
C. Cross cut in rock.  
D. Stone.  
E. Stone. F. post on C line.  
October 25<sup>th</sup> 1898. H.C. Robinson  
Dept. C Surveyor.

7 9

No 233

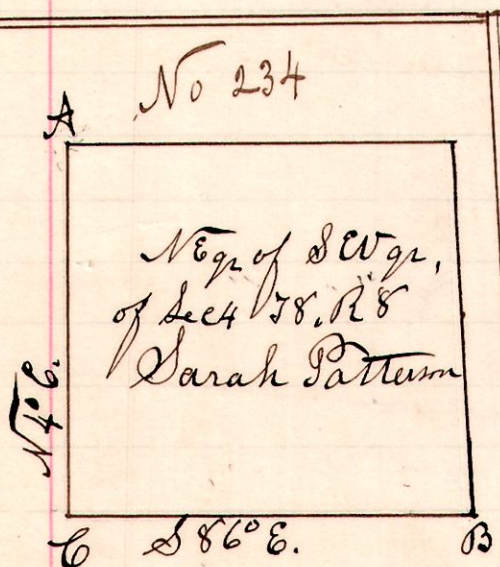


A Survey made to locate the  
State road at the Pitt Culvert  
near north line of Corporation.  
E. Being on State Road from Miller-  
slung to Wooster.  
The road is 60 feet wide.  
The new Culvert is 50 feet long.  
The west line of the road is  
4 feet 9 inches west of the west  
End of the new Culvert.  
The East line of the road is  
5 feet 3 inches East of the East  
End of the new culvert.

November 3<sup>rd</sup> 1898. H.C. Robinson  
Dept. C Surveyor.

8 8 4

No 234



A Survey made for Sarah Patterson, to establish corners, and  
and run and mark lines on west and South, A, C, B  
Established corner at "A." by two witness trees taken by A. J. Dilcott  
in 1857 as recorded in Vol 1, Page 61. Survey Record.

At B. Dilcott's witness trees gone, and established corner by  
a stone shown by James M. Martin, as the original corner, made by  
Dilcott. Established corner C. by tracing line A-C-B.  
Nov 9<sup>th</sup> 1898. H.C. Robinson  
Dept. C Surveyor.

James M. Martin  
Chain carriers,  
C. M. Martin

B. Walnut 4" - S 89° W - 8 feet  
C. Dogwood 5" - S 62° W - 10 ft  
" W. Walnut 6" - N 22° E - 8 1/2 ft.