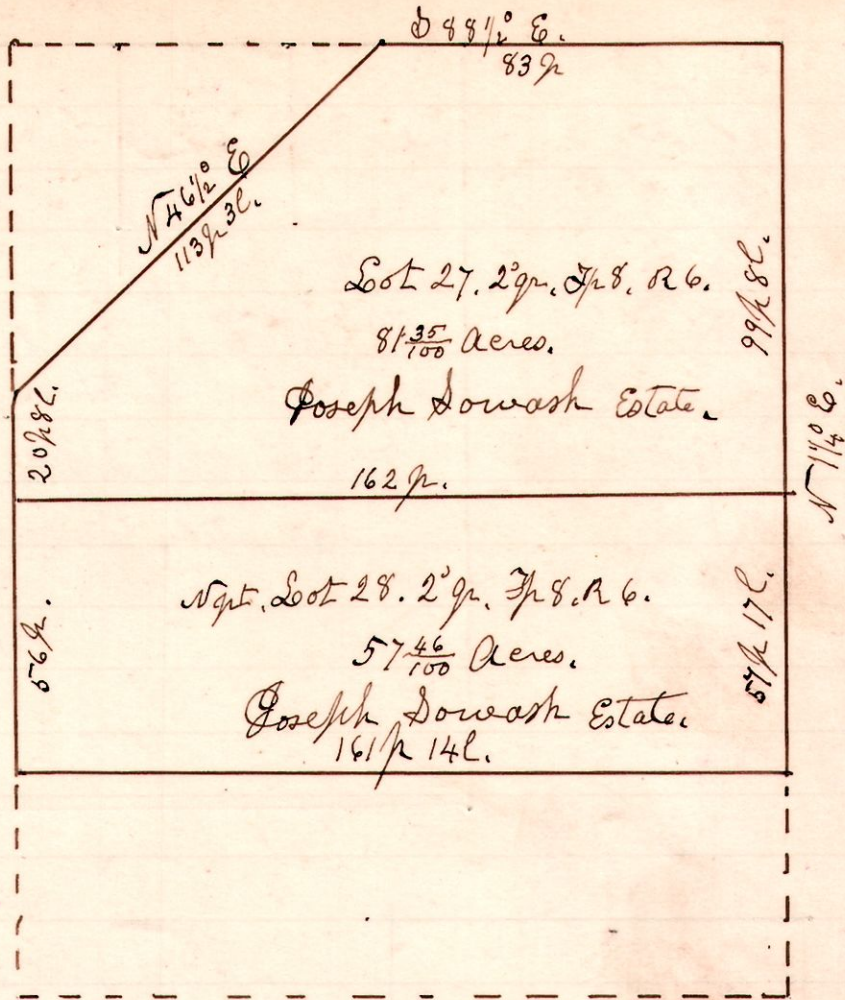


No 185.

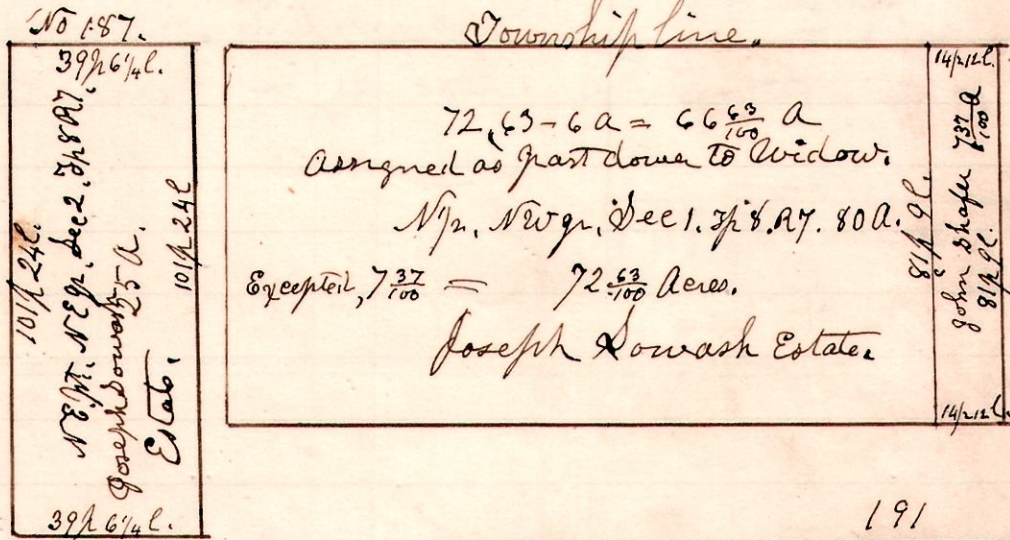
R 5/8 Sec 28 2<sup>d</sup> gr  
6 8 27 2  
28 2



No 186 7 8 1  
" 187 7 8 2

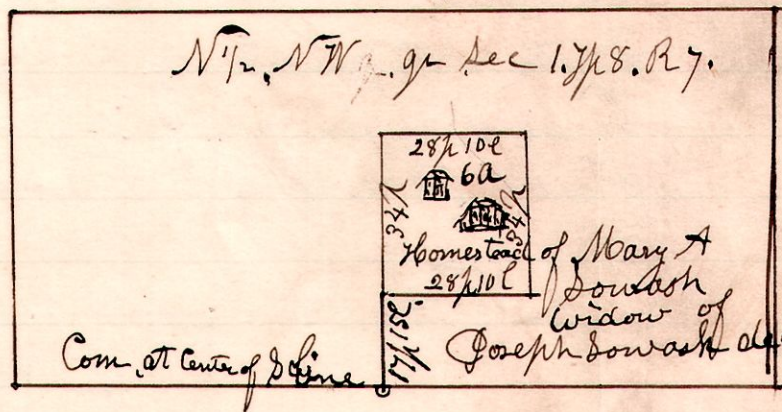
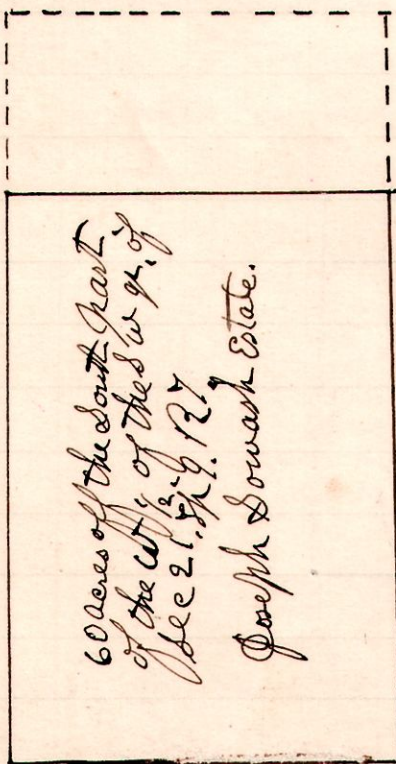
No 186.

Township line.



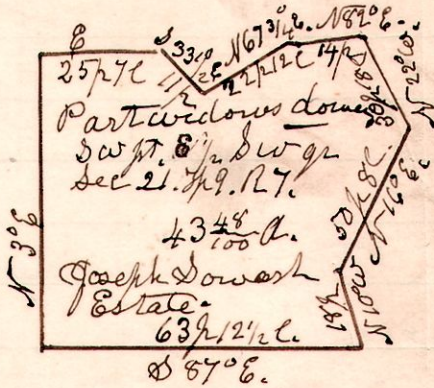
" 188. 7 9 21.  
" 189 7 9 21

No 188.



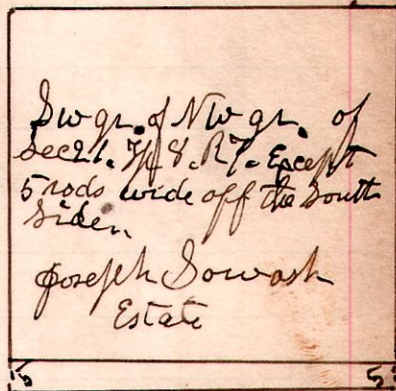
" 190 7 8 1

No 189.



" 191 7 8 1

190



The above plats represent the lands belonging to the Estate of Joseph Dowash, on which assignment of Homestead, and down to Mary A Dowash widow of Joseph Dowash deceased, and appraisement of balance of the Estate was had by order of the Probate Court. Sept 20<sup>th</sup> and 21<sup>st</sup> 1897.

W P Waltman  
Wm Ling Chairman.

H H Robinson  
Dep<sup>y</sup> Com<sup>r</sup>