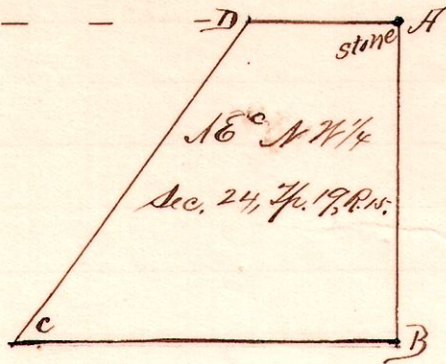


R 3/4 Sec 24 P 19
15-19 24 N 1/4 NE

No. 162.



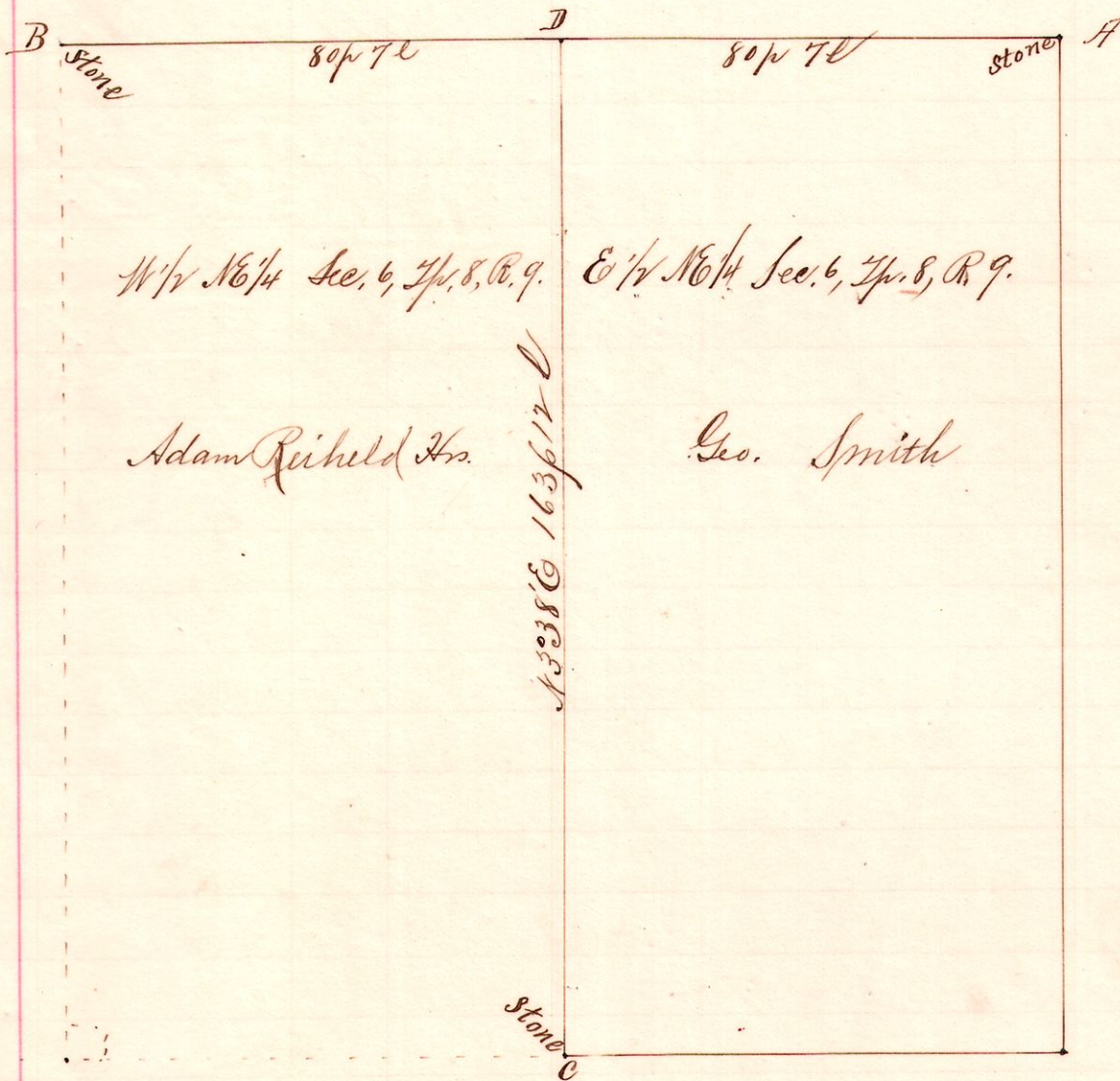
Notes
 "A," stone at the NE 1/4 NW 24
 Sec 24 Tp 19, R 15.
 "B," a post on the east
 line of said quarter 210
 east of a sugar 30
 "C," a post in the road
 near grist mill 60 p
 130 188 1/2 W from B.
 "D," a post on the north line
 of said quarter N 38 1/2 E
 63 p 30 from C and
 S 88 1/2 E 22 p 19 to A.

A Survey for Joseph Jackson, Geo W. Kayler and others,
 Jan. 14, 1896.

Frank H. Gent, Co. Surveyor.

9 8 6 NE 1/4 E 1/4

No. 163.



Notes
 "A," stone at the northeast
 corner of the northeast
 quarter of Sec. 6 Tp. 8, R. 9.
 "B," the north quarter post
 said section N 86 1/2 W
 160 p 14 from A;
 found original W oak
 S 55 W 21; established
 stone corner.
 "C," the south half quarter
 corner of Sec. 6, we
 found from W oak witness
 taken by Silcott, then
 established stone corner.
 "D," the north half quarter
 corner, N 3 38 E 163 p 12
 from C; took as a witness a
 Hickory 10 S 1 W 3 links.

Chainmen
 August Hasty
 J. F. Zimmerman

Frank Ernst, marker.

A survey made for George Smith, Adam Reicheld Hrs. et al,
 to determine the corners B, C and D; also the line CD (the half quarter line)
 February 5, 1896.

Frank H. Gent,
 Co. Surveyor,
 Holmes Co.,
 O.