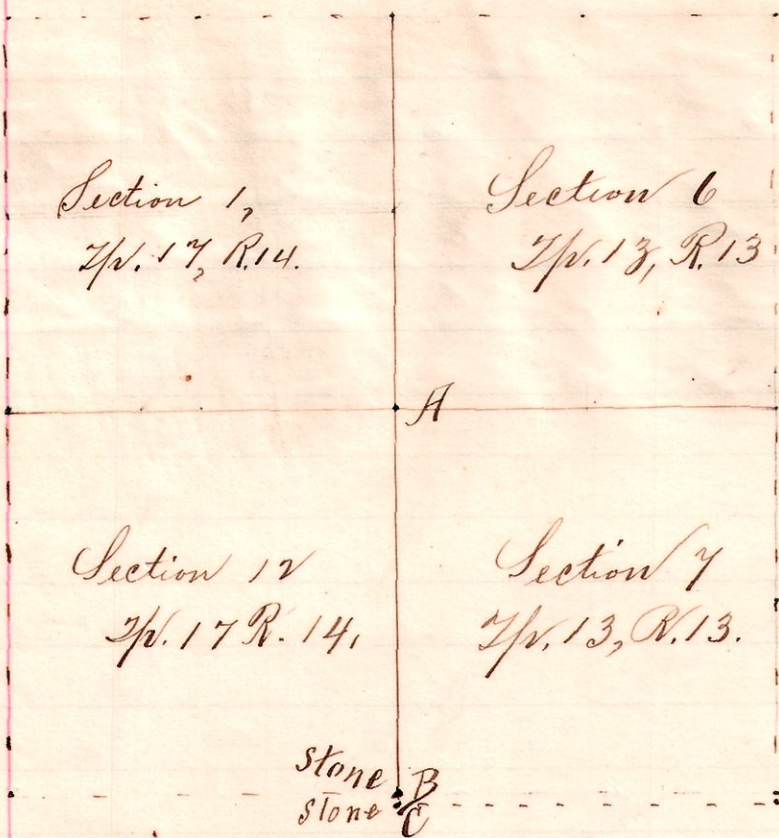


R Twp Sections  
14 17 1<sup>st</sup> 12<sup>th</sup> corner  
13 13 6<sup>th</sup> 7<sup>th</sup>

No. 141.



Notes.

Sections 1<sup>st</sup> and 12 are in Twp. 17, Range 14. (Ripley Twp.)  
 Sections 6<sup>th</sup> and 7 are in Twp. 13, R. 13, (Prairie Twp.)  
 "B" is a stone on the Range Line, at the southeast corner of Section 12, Twp. 17, R. 14.  
 "C" is a stone at the southwest corner of Sec. 7 Twp. 13 R. 13 S1°30' W 5 perches 20 links from B.  
 "A" the corner for the 4 sections we established Stone corner from Original W Oak 50 Corner. (stump)

Established above described corner for J. B. Lacey, P. Stinbring, et al,  
 May 13, 1895;

Frank H. Genet, Co. Surveyor

No. 142.

To Geo. Burgoon & Oliver M<sup>r</sup> Fuller:

You are hereby notified that a survey will be made of testimony taken by the County Surveyor of Holmes County, Ohio, on the 17 day of May, 1895, between the hours of 9 A.M. and 6 P.M. and to continue from time to time at the request of said County Surveyor, until the lines, boundaries and corners of the following described tract of land now owned and held by Wm Fochler, et al, and situate in Knox township, Holmes Co. Ohio, can be established: Being the line between Lots 28<sup>th</sup> and 29<sup>th</sup> and part of the east part said Lot 29 of the 4<sup>th</sup> quarter of Twp. 9, R. 9.

Interested parties are hereby notified to give said Surveyor the names of witnesses they wish subpoenaed and to be present at said survey.  
 Signed this 26 day of April 1895.

William Fochler

State of Ohio, Holmes Co. S.S.

William Fochler being first duly sworn states that on April 26<sup>th</sup> 1895, he served a copy of the foregoing notice on O. M. Fuller & Geo. Burgoon.  
 W. M. Fochler

Sworn to and subscribed before me this 18<sup>th</sup> day of May, 1895:

Frank H. Genet, Co. Surveyor.

No 142.

Notes.

On the 17<sup>th</sup> day of May 1895, we began the survey by establishing a stone corner at the northeast corner of Lot 29, of the 4<sup>th</sup> quarter Twp of Twp. 9, Range 9. from W Oak witness taken by A. Silcott in 1837. We then retraced the line between said Lots 28<sup>th</sup> & 29<sup>th</sup> bearing S3°45' W 56 ch 8.1  
 Chainmen - J. P. Cly & H. H. Wachtel.

I hereby certify the foregoing to be a correct account of a survey made for Wm Fochler, et al

Frank H. Genet, Co. Surveyor

Lot 29 - 33°45' W 56 ch 8.1 - Lot 28

May 17<sup>th</sup> 1895.

R Twp 9 Lots  
9 9 4<sup>th</sup> 28<sup>th</sup> 29<sup>th</sup>